

Memorandum

for the Engineering Committee Meeting of March 21, 2017

TO: Engineering Committee Members

FROM: Chip Close, Operations Manager
Shannon Wood, Business Services Technician

DATE: March 1, 2017

SUBJECT: Iron Horse/Brewer Road District Financed Waterline Extension

OPERATIONS

RECOMMENDATION: Review and evaluate the project using District Financed Waterline Extension policy criteria; advise staff as appropriate.

BACKGROUND: Originally, the District recognized a petition for this group and processed it on the following timeline:

- Engineering Committee – March 19, 2014
- Administrative Practices Committee – January 6, 2015
- Board of Directors encumbered funds – January 14, 2015
- Neighborhood kick-off meeting – February 5, 2015
- The project was closed due to lack of Good-Faith deposits – May 21, 2015
- A meeting to discuss the option of utilizing a State Revolving Fund loan for extending waterlines – August 26, 2015
- Engineering Committee encouraged the group to reapply for the DFWLE program if they desired – March 15, 2016

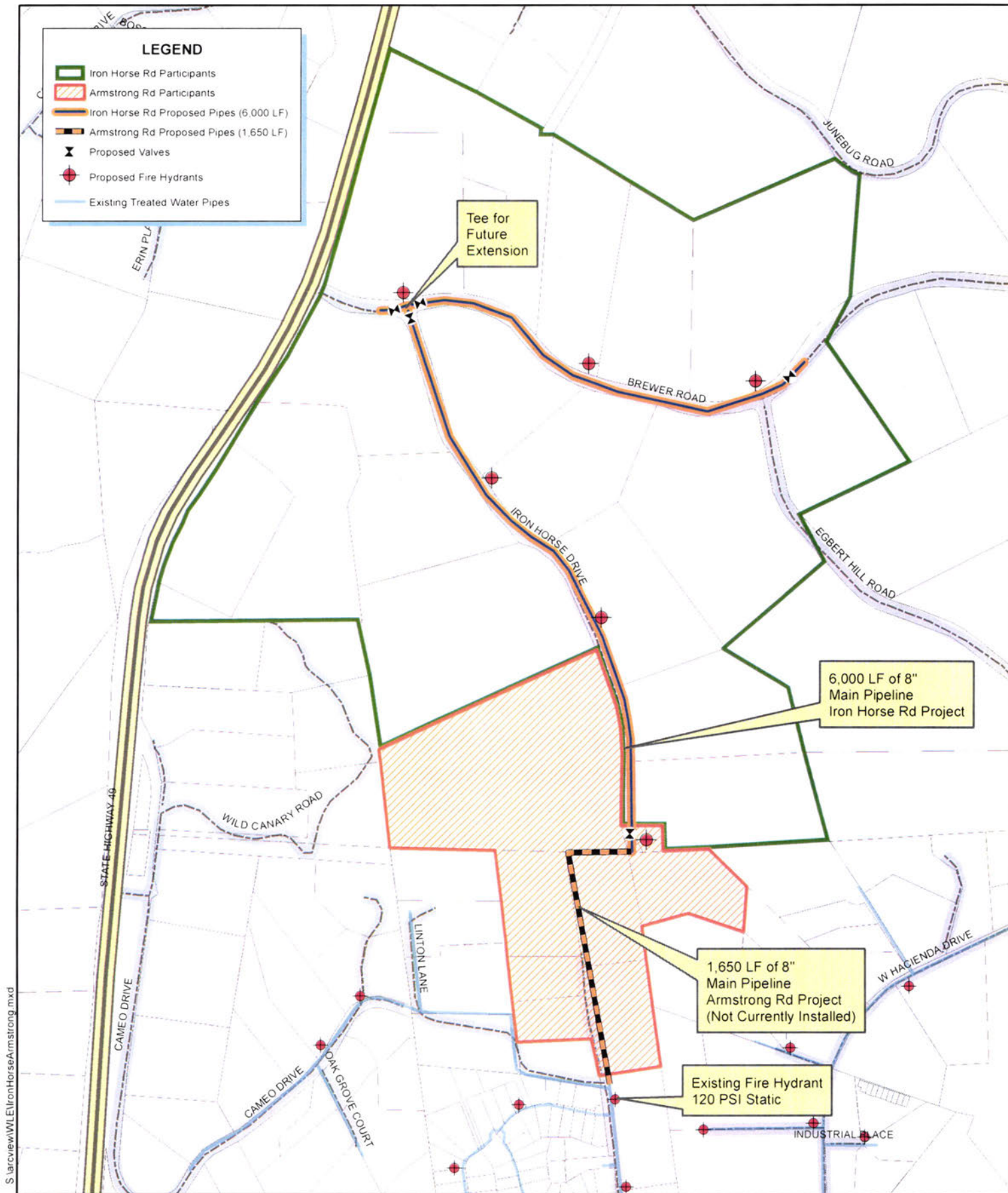
In the meantime, due to three Temporary Service Location parcels on Armstrong Road, the District has worked on a waterline extension on Armstrong Road terminating with a fire hydrant at the south end of Iron Horse Drive. This extension shortens the length of pipeline necessary to supply the Iron Horse/Brewer Road group by approximately 1,650ft.

The District received a “renewed interest” petition representing interest by twelve (12) landowners. The newly proposed project would consist of extending a waterline from the south end of Iron Horse Drive and continuing east on Brewer Road. The area has been mapped using the current policy methods and proposes approximately 6,000lf of 8-inch pipe, potentially serving 18 parcels (60% is 11 parcels). There are 15 mainline connections and 3 variance connections. There appears to be 1 vacant parcel.

BUDGETARY IMPACT: To be determined.

Attachments (1):

- Area Map



S:\arcview\WLE\IronHorseArmstrong.mxd



IRON HORSE / ARMSTRONG ROAD WATERLINE PROJECTS

Date: 3/1/2017

Drawn By: D. HUNT

NEVADA IRRIGATION DISTRICT

NEVADA COUNTY -- PLACER COUNTY
GRASS VALLEY, CALIFORNIA

Scale: 1" = 700' @ 8-1/2x11

FIGURE: