

Memorandum

for the Engineering Committee Meeting of March 19, 2014

TO: Engineering Committee Members
FROM: Shannon Matteoni, Business Coordinator
DATE: March 11, 2014
SUBJECT: Table Meadow Road District Financed Waterline Extension

OPERATIONS

RECOMMENDATION: Review and evaluate project using District Financed Waterline Extension policy criteria; advise staff as appropriate.

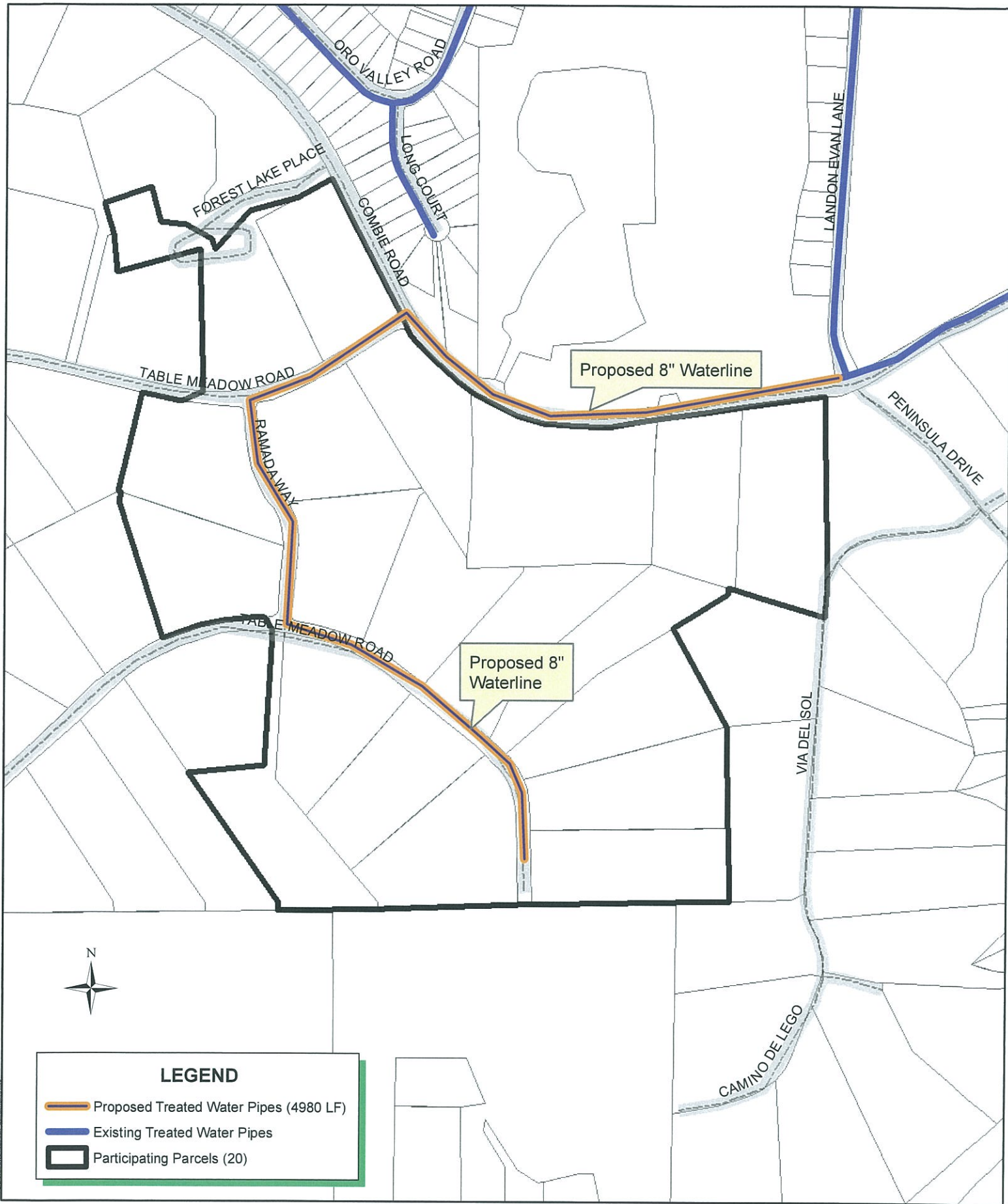
BACKGROUND: The District received a petition signed by fourteen (14) landowners to extend treated water from Combie Road to Table Meadow Road. The project proposes approximately 4980lf of 8-inch pipe, potentially serving 20 parcels.

As illustrated on the map, there are 20 mainline connections and no variance connections. There appears to be no vacant parcels.

BUDGETARY IMPACT: To be determined.

Attachments (1):

- Area Map



LEGEND




-  Proposed Treated Water Pipes (4980 LF)
-  Existing Treated Water Pipes
-  Participating Parcels (20)

TABLE MEADOW / COMBIE ROAD DFWLE



Date: 12/2/2014
 Drawn By: D. HUNT

NEVADA IRRIGATION DISTRICT
 NEVADA COUNTY -- PLACER COUNTY
 GRASS VALLEY, CALIFORNIA

Scale: 1" = 500' @ 8-1/2x11
 Sheet: 1 of 1