



# GM Newsletter

October 2024

From The Desk of Jennifer Hanson, General Manager

*Water For Life*

## BOARD OF DIRECTORS



Rich Johansen  
Division V  
President



Ricki Heck  
Division I  
Vice President



Chris Bierwagen  
Division II



Karen Hull  
Division III

## Message from the General Manager

Fall weather is upon us, and NID workers are busy preparing our water systems for colder, harsher weather. The focus is on infrastructure. That refers to everything it takes to deliver water to you. This includes canals, pipes, dams, reservoirs, and treatment plants.

The irrigation season ended on Oct. 15, which means flows are shut off through the canals to our raw water customers. Treated water customers will see no difference; turn on the tap, and the water will be there.

Looking forward to this fall, our Board of Directors is looking to fill the Division 4 vacancy. See the story on Page 4 to learn more about how to apply if you live in that division.

Everyone at NID wants to especially thank veterans for their service. And thank you for your support, and, as always, are proud to serve you for more than 100 years.

### In this edition:

- \* Fall preparation around the District. See the work, [Pages 2-3](#)
- \* Division 4 Director vacancy: applications taken for new appointment, [Page 4](#)
- \* Hydropower conducts its annual outage — Chicago Park and Dutch Flat , [Page 5](#)



Hydropower workers use a floating dock to make routine surface repairs on the Bowman Dam.

# NID crews work to prepare infrastructure ahead of winter storms



In advance of the changing seasons, NID crews are busy around the District preparing NID's water system for the upcoming winter.

Whether canals treatment plants, dams or roads, the crews want to ensure NID's infrastructure is operating efficiently to keep water flowing through stormy weather and winter months.

(Left) A maintenance crew made sure the Newtown Canal near the Peaceful Valley crossing is clear and braced for seasonal storms.



## Reinforcing the road to the D.S. Siphon Lane Pump Station

The maintenance crew has been reinforcing an important berm that is the road to the D.S. Siphon pump station. This road and canal are located in very steep terrain and suffered damage last winter.

Located above Nevada City, the station gives NID the ability to pump water uphill into the Cascade Canal and also supply the Snow Mountain Canal in emergencies and other water outages. This was very important this year when unexpected damage through Lake Spaulding essentially cut off flows to NID foothill reservoirs. With no water replenishing the NID system, the pump station was essential to maintain deliveries to customers, and it ran around the clock.



## Repairing roads

Crews have been repairing and repaving damaged roads before cooler weather and moisture arrives.

## Irrigation season comes to an end

The NID irrigation season ended officially on Oct. 15. Raw water customers should expect canal water to stop flowing, as crews have ramped the system down. Be aware: canals can experience fluctuating flows as these changes take place.

Since the 1920s, NID has brought pure water from the high mountains to the ranches and farms of the drier Sierra foothills. Today, about 5,600 raw water customers irrigate nearly 33,000 acres in Nevada and Placer counties.

Most raw water users purchase their raw water on a seasonal basis – the primary six-month irrigation season normally runs from April 15 through Oct. 15.

# NID crews work to prepare infrastructure ahead of winter storms

(from Page 2)

## Treatment Plant pond cleaning

NID crews are taking advantage of dry conditions and warmer weather to clean out reclaim ponds at the District's water treatment plants.

The work is being completed at the Elizabeth George, Loma Rica, Lake of the Pines, North Auburn, Lake Wildwood, Smartsville plants.

During the water treatment process, sedimentation is filtered from the water, and backwashing water gets pumped or gravity fed to a series of reclaim ponds. There, the water can be filtered through the sand, and it leaves behind the solids when it dries out. The only time these ponds can be cleaned is at the end of summer before rain.



## D.S. Siphon Extension Pump gets some T.L.C.

Recently, district workers removed and repaired the DS Extension Pump, which has ran all summer due to the PG&E outage at Lake Spaulding. Understandably, the pump had low output.

In advance of winter storms, NID's work by all departments is being completed to make sure water gets to you. We don't know for certain what this winter will bring, but we can take some advice from Benjamin Franklin: "An ounce of prevention is worth a pound of cure."



# NID will appoint new Director to serve Division 4

*Applications being accepted until Oct. 25*

NID's Division 4 Director seat on its Board of Directors is vacant, and applications are being accepted now. The seat will be filled by appointment.

Those interested in serving as the Division 4 Director, which includes portions of North Auburn and the Lincoln areas, are invited to apply before October 25, 2024. The appointee will hold office until the first Friday in December 2026.

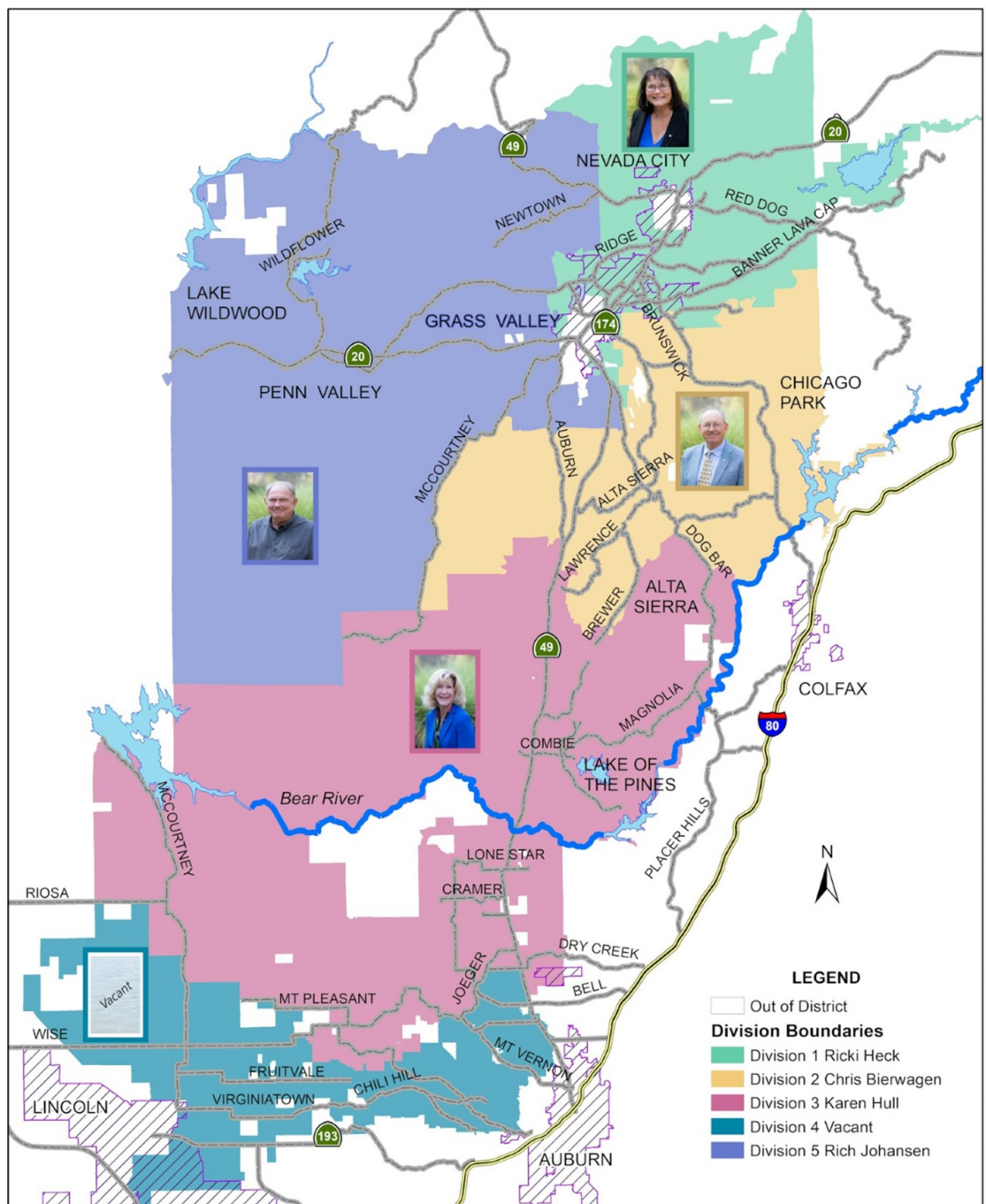
If interested, contact NID's Board Secretary Kris Stepanian at [stepianik@nidwater.com](mailto:stepianik@nidwater.com)

More information:

Read more about application submission, [click here](#)

[Notice of Vacancy Statement of Interest download](#)

[Division map \(interactive – find the division in which you live\)](#)



## NID Hydroelectric: Keeping hydropower operating efficiently



During an annual outage, the NID Hydroelectric Department undertook the replacement of key components of the electrical protection system at Chicago Park and Dutch Flat powerhouses.

The work included:

- Hydro Department Communication and Electrical Technicians installed a new Remote Terminal Unit (RTU) for communicating remotely with Chicago Park Powerhouse
- Protection Systems Specialist replaced 125 VDC station battery chargers at two powerhouses
- Installed electrical relays and equipment in preparation for a standby generator and automatic station service breaker upgrade at Dutch Flat Powerhouse
- Performed electrical testing on the Dutch Flat and Chicago Park Generators and Transformers.

Left: NID workers install a communication unit in the Chicago Park Powerhouse

[Watch Anatomy of a Powerhouse](#)  
(1:41 minutes)

## Bear River Clean-up

A toilet, burned-out sofa frame and nunchucks were just a few items the NID team found while cleaning along the Bear River, as part of an annual cleanup event.

Two dozen employees focused on two locations: the Dog Bar Bridge area along the Bear River and Taylor Crossing area.

During the morning, participants scoured the riverbanks for trash and debris. In all, more than 24 bags of trash plus larger items were collected. As a result, the Bear River is a cleaner, better place thanks to the efforts.

The cleanup effort was part of the Annual Yuba River Cleanup, sponsored by the South Yuba River Citizens League (SYRCL).



# Bowman Lake



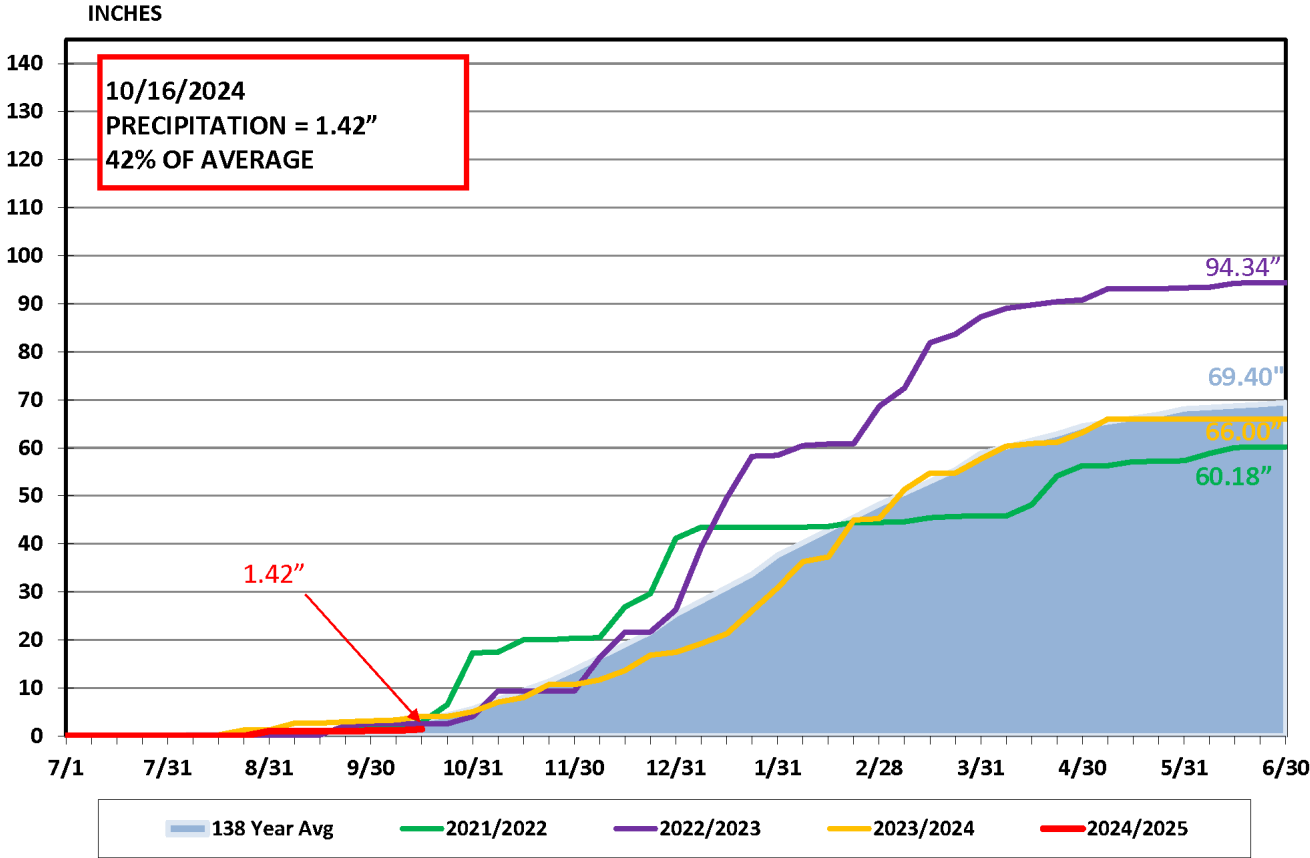
NID has been keeping weather records for Bowman Reservoir (elevation 5,650 ft.) since 1929.

The 69.2-inch annual average precipitation at Bowman compares to an annual average of 56 inches at 2,700 feet near Nevada City and 52 inches at 2,400 feet in Grass Valley.

Precipitation is measured for the 12-month period beginning July 1 and ending June 30.

As of Oct. 16, 2024, only 1.42 inches had fallen at Bowman. The new water year began on July 1.

## BOWMAN LAKE PRECIPITATION



# NID's total reservoir storage is 103% above average

Total reservoir storage was 176,134 acre-feet as of Oct. 16, 2024. That is 103 percent of a 10-year average.

NID's water managers regularly post updates of reservoir levels. You can see how water levels fluctuate in easy-to-read charts.

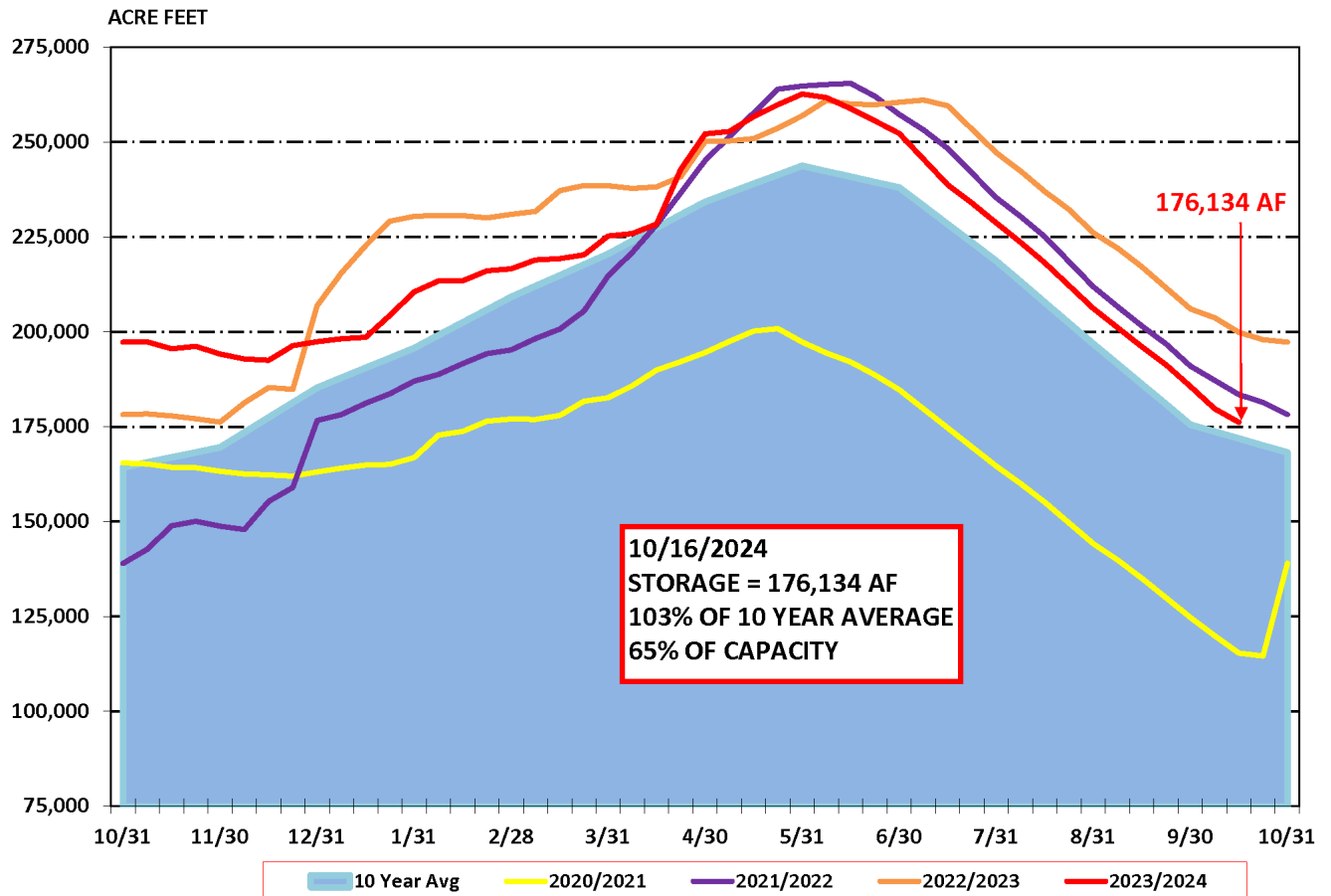
Lakes include: Jackson Meadows, Jackson, French, Faucherie, Sawmill, Bowman, and Canyon Creek, as well as Scotts Flat and Rollins.



Faucherie Reservoir

Interested in the latest information? It's all just a click way on the NID website under [River & Reservoir Data](#).

## NID RESERVOIR STORAGE



# Project Updates - Engineering, Hydropower and Operations

The NID Engineering Department has a number of projects in various phases of construction.

Project Status Reports provide project information, planner information, and a brief project description. Be sure to sign up for email news alerts about projects.

[2024 Capital Improvement Program Mid-year Project Status Update](#)

[2024 Engineering & Hydroelectric Project Status Reports page](#)



## Harris Road DFWLE

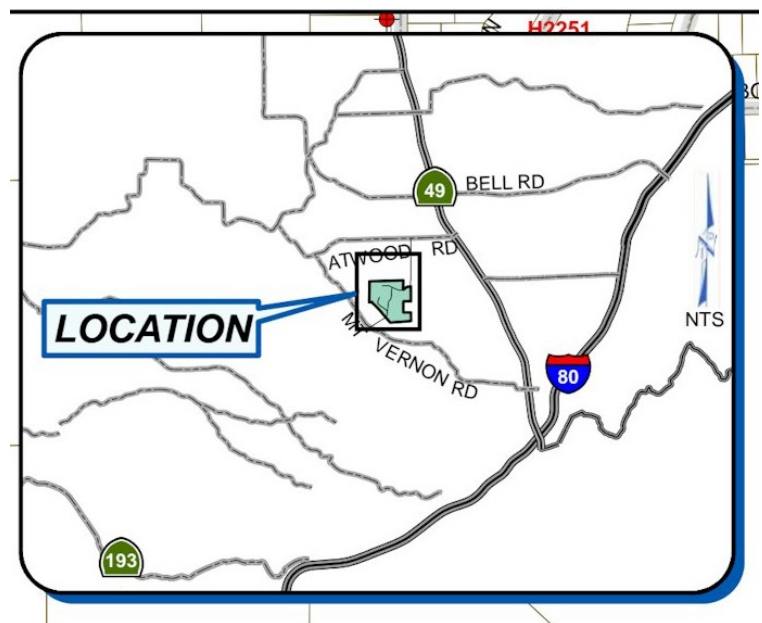
September 26, 2024 - Construction is complete. Road restoration is in process.

This project is for the installation of approximately 3,000 feet of 8-inch diameter treated waterline, three fire hydrants, and all appurtenances, to serve 34 parcels on Harris Lane and Bean Road in Auburn. Construction is scheduled to begin July 15, 2024, through October 31, 2024.

Update: August 16, 2024 – Construction of the main pipeline is completed on Harris Road and Harris Lane. It is expected that the main pipeline construction will be completed on Hidden Oaks Lane Friday, August 16, 2024.

DFWLE stands for District Financed Waterline Extension.

[Click here to see complete project details](#)





---

## Meetings & Events



**Board of Directors Meeting**  
Wednesday, Nov.13, 2024  
NID Main Office, Grass Valley

**Board of Directors Meeting**  
Wednesday, Dec. 11, 2024  
NID Main Office, Grass Valley

*\*\* Dates and times subject to change. Please check [nidwater.com](http://nidwater.com) for updates*



---

## VETERANS DAY

---

Honoring All Who Served

On behalf of everyone at NID, thank you for your courage and commitment to keeping us safe