

Memorandum

for the Engineering Committee Meeting of September 20, 2016

TO: Engineering Committee Members

FROM: Chip Close, Operations Manager
Shannon Matteoni, Business Services Technician

DATE: September 12, 2016

SUBJECT: Montclair Court District Financed Waterline Extension

OPERATIONS

RECOMMENDATION: Accept the Montclair Court Project into the District Financed Waterline project list with potential use of capacity funds for pump station modifications.

BACKGROUND: The District received a petition signed by eight (8) landowners to extend treated water mains from Serene Hills Court to Montclair Court. The area was mapped using the current policy methods. Preliminary studies on the orderly expansion of the distribution system to serve this area will necessitate an expansion of the existing Serene Hills pump station and roughly 4,600 lf of 8-inch pipe to serve eleven (11) parcels. Future expansion beyond Montclair court is expected in the future.

Adding this project to the DFWLE list will allow staff to utilize community investment program funds to complete a more detailed analysis such as existing pressures, pipeline materials, and pump station specifications. These items will be studied to help determine the level of system modifications that will be necessary.

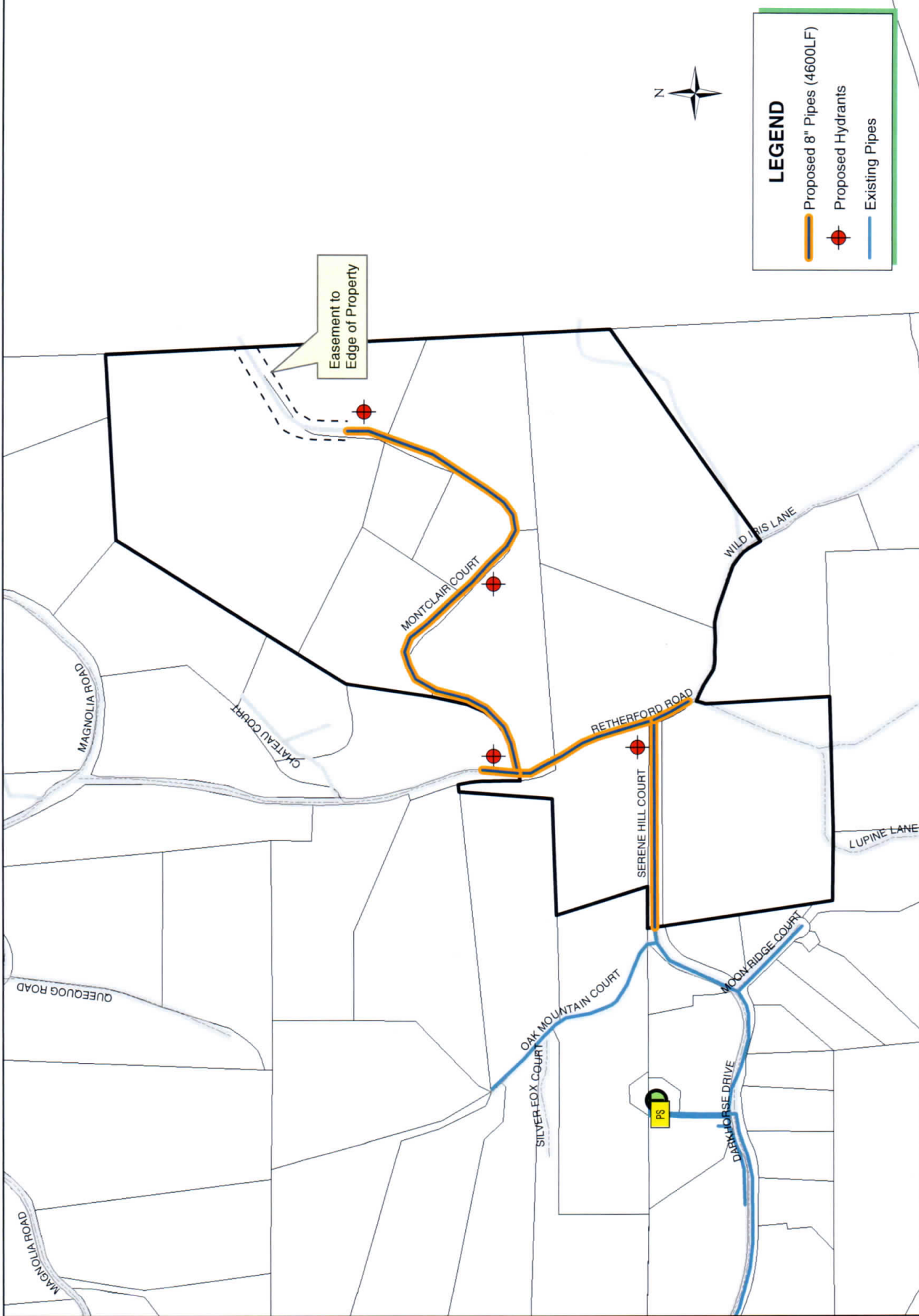
It is the recommendation of staff based on the potential service area that upgrades to the Serene Hill Court pump station is considered regional benefit. As a pump station of regional benefit the costs for design and upgrade will be from capacity fees. The attached map indicates the area that is anticipated to be served by this pump station.

As illustrated on the Area Map, there are 11 mainline connections and 0 variance connections. There appears to be 3 vacant parcels, one above the soft target of two for a project of this size. The vacant parcels have different individual owners.

BUDGETARY IMPACT: To be determined.

Attachments (2):

- Area Map
- Regional Pump Station Area



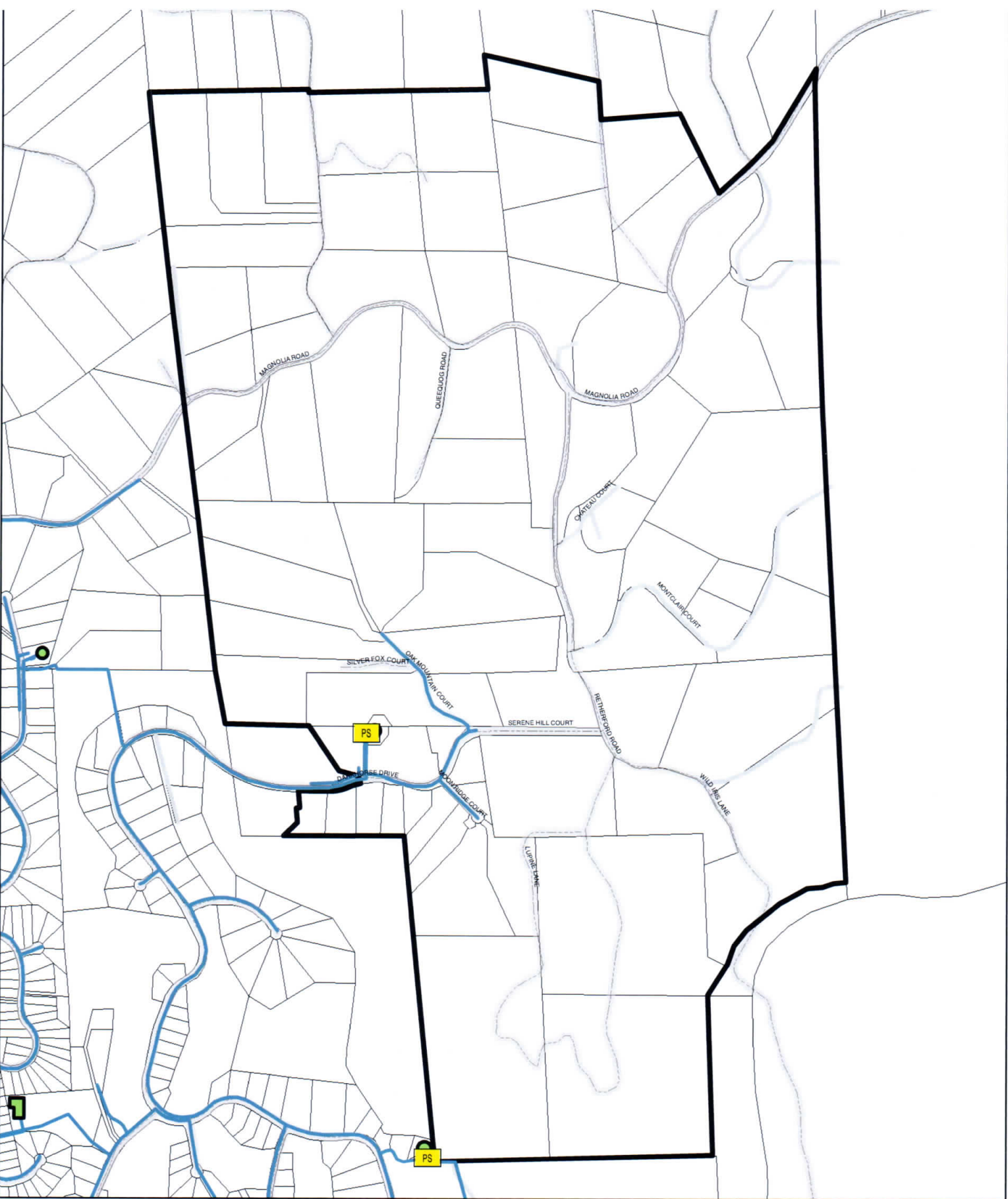
S:\arcview\WLE\Montclair1.mxd



NEVADA IRRIGATION DISTRICT
 NEVADA COUNTY -- PLACER COUNTY
 GRASS VALLEY, CALIFORNIA

MONTCLAIR COURT DFWLE

S:\arcview\SERVICE AREA\DarkhorsePump.mxd



POSSIBLE DARKHORSE PUMP STATION SERVICE AREA



Date: 9/1/2016
 Drawn By: D. HUNT

NEVADA IRRIGATION DISTRICT
 NEVADA COUNTY -- PLACER COUNTY
 GRASS VALLEY, CALIFORNIA

Scale: 1" = 1000' @ 8-1/2x11
 Sheet: 1 of 1