



GM Newsletter

May 2024

From The Desk of Jennifer Hanson, General Manager

Water For Life

BOARD OF DIRECTORS



Rich Johansen
Division V
President



Ricki Heck
Division I
Vice President



Chris Bierwagen
Division II



Karen Hull
Division III



Trevor Caulder
Division IV

Message from the General Manager

While water still is not flowing down the South Yuba Canal and into our foothill reservoirs, NID is encouraged by the outlook. Here's an update on the situation:

The permanent fix to PG&E's South Yuba Pipe, which was destroyed by a rockslide in February, has been accelerated after the utility obtained the specialty pipe needed for the repairs. This procurement is sooner than expected, and now the estimated completion date is late August. After that, 100% of flows can be released into NID's portion of the South Yuba Canal.

More good news: the storm early this month helped boost the water supply in the District's foothill reservoirs. With no replenishment from the South Yuba Canal flows, right now we are entirely dependent on stored water in Rollins and Scotts Flat for customer deliveries. The last round of storms provided enough runoff for about 10-14 days of additional water supply. As of May 16, Rollins is at 98.6 percent and Scotts Flat is at 98 percent.

Also, NID has called for voluntary conservation, and customers have responded. Thank you to all who are committed to becoming more water efficient; it makes a difference. Some 255 raw water customers have reduced their water allocations by 429 miner's inches, saving 3,891 acre-feet. Overall, treated water customers are conserving about 11 percent compared to past years.

All in all, we are in an unprecedented situation, and I am grateful to everyone who has stepped up to understand and support NID. As always, the District remains committed to providing a dependable, high-quality water supply for the communities we serve.

In this edition:

- * Water shortage update, [Page 2](#)
- * Customers step up to the call for voluntary conservation, [Page 3](#)
- * Water-saving tips plus rebates, [Page 4](#)



An NID hydropower crew takes advantage of the unexpected outage of the South Yuba Canal to complete maintenance at the Dutch Flat #2 Powerhouse.

Permanent fix to South Yuba Pipe underway to allow flows in August *Spaulding 1 Powerhouse partial flows could start in June*

PG&E has obtained the specialty pipe needed for repairs to the utility's South Yuba Pipe, of which 240 feet was destroyed by a rockslide in February. The permanent repair is estimated to be made in late August.

The pipe is the primary conduit into NID's South Yuba Canal, which, in turn, transports water to Scotts Flat Reservoir to supply customers in Nevada County.

Originally, PG&E estimated it wouldn't be able to secure replacement pipe until September at the earliest. The plan was to make a temporary bypass repair so partial water flows could be sent down the South Yuba Canal. Now, once complete, the permanent repair will allow full flows into NID's portion of the canal.

But before then, in June, PG&E expects to partially restore flows through the Spaulding 1 Powerhouse into the Drum Canal with a portion of that water being diverted into the South Yuba Canal, bypassing the South Yuba Pipe.

PG&E's Spaulding 1 Powerhouse, which has had an unscheduled outage since a leak was found in March. Further inspections found two columns of the powerhouse's foundation had partial and full erosion. That failure cut off supplies to the Drum Canal, the primary source of water for Rollins Reservoir and customers in Placer County. Repairs are being made around the clock, and the return-to-service date is the second half of June, with reduced water capacity of about 400 cubic feet per second (cfs) versus full capacity of 760 cfs.

[What's the latest? Click here for the NID update webpage](#)



A PG&E crew makes repairs at Lake Spaulding..

Photo courtesy of PG&E

Drawdown at lakes slows thanks to recent storm runoff



Rollins Reservoir was at 98% capacity on May 21.

The recent storms provided enough runoff for about 10-14 days of additional water supply in Rollins and Scotts Flat reservoirs.

As of May 21, Rollins and Scotts Flat were at 98 percent capacity.

Currently, NID is not receiving flows into the two foothill reservoirs while repairs are being made to infrastructure at Lake Spaulding. As a result, the District is tapping the limited water storage to meet customer demand.

In the coming weeks and months, the drawdown at the reservoirs could be significant. The situation could impact deliveries to NID customers and have severe effects on lake levels and recreation opportunities this summer. Also, hydroelectric generation will be affected by the water restrictions.

Photo Gallery of the drawdown

Each week, NID will post photos of Rollins Reservoir with water capacity information in order to provide a visual of the drawdown. [Click here for the photo gallery](#)

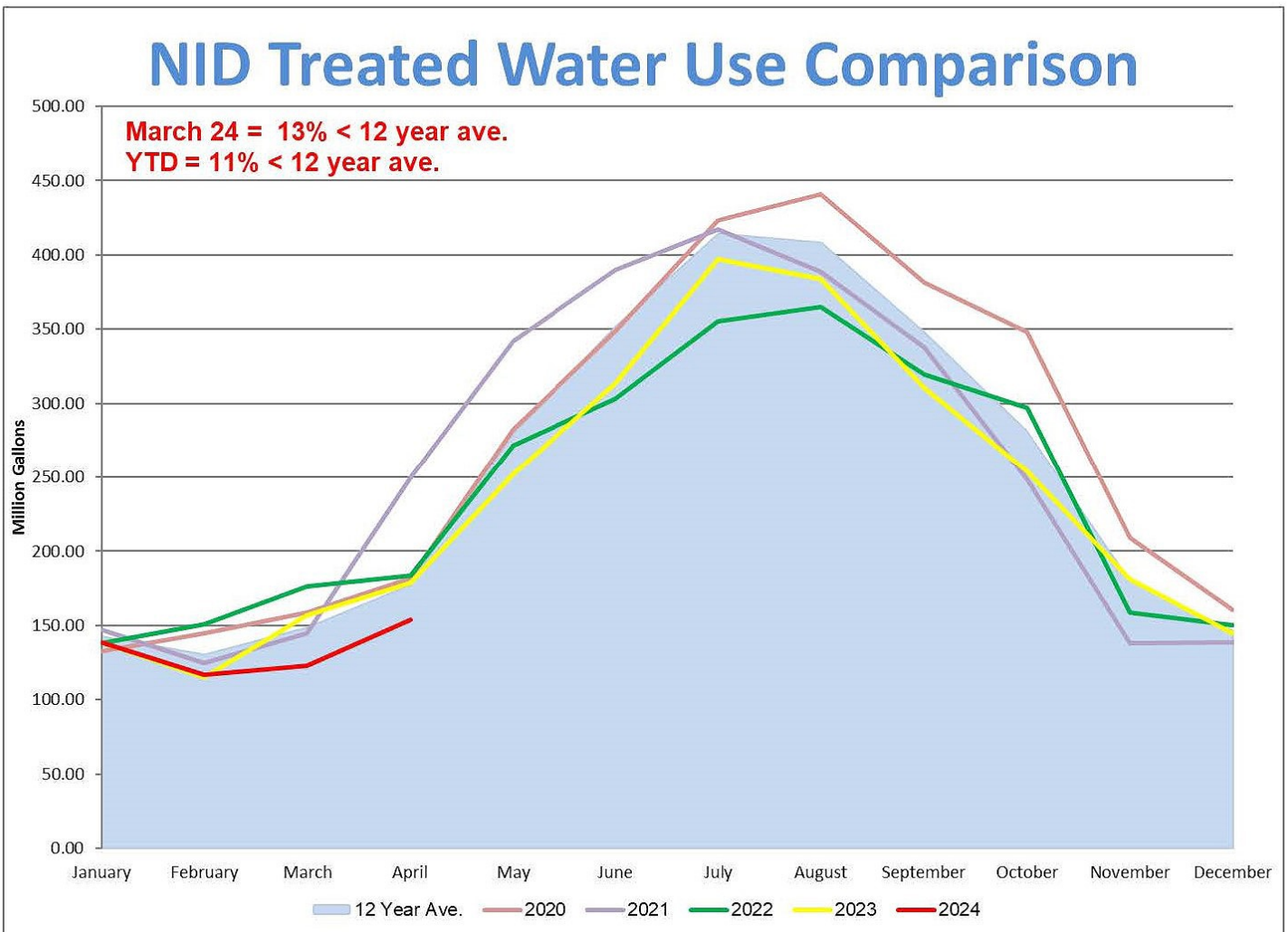
Customers respond to conservation request

NID is currently requesting a voluntary 20 percent conservation by all customers. The lack of access to normal watershed runoff means the District will need to rely upon limited water storage. Conserving water will allow supplies to remain in Rollins and Scotts Flat reservoirs.

NID customers have responded with conservation efforts

Treated water: Customers are saving about 11 percent of water (compared to the last 12 years for this time of year).

Raw water customers: Since the request for conservation on March 27, 255 customers have volunteered to reduce their allocation 429 miner's inches, saving 3,891 acre-feet (an acre-foot is the amount of water needed to cover one acre of land to a depth of one foot) for the summer.



Mulch Magic Giveaway: 150 cubic yards to the community

Nevada Irrigation District's Annual Mulch Magic Giveaway was a huge success. Seventy-five residents took away 150 cubic yards of free mulch.

The mulch giveaway is NID's continued effort to promote conscientious water use and conservation. The mulch was handed out free on a first-come first-served basis at the Nevada County Fairgrounds on April 27.

As a "self-load" event, participants shoveled the mulch into their vehicles or had help from local Boy Scouts and Eagle Scouts. Their earned tips help finance attendance to a summer camp.

Mulch is a great tool to help save water in gardening and landscaping. Two or three inches of mulch helps retain water keeping the soil moist for longer periods of time.

NID purchased the mulch and teamed with sponsor Nevada County Fairgrounds.



For their hard work loading mulch for residents, Boy Scouts earned \$1,500 for their summer campout.

NID offers rebates for water efficiency efforts

NID is working to help you become more water efficient with several rebates:

Toilet Rebate Program: NID treated water customer can get financial incentive to replace older toilets with high-efficient, water-saving toilets

Raw Water Storage Tank Rebate: The districts' Raw Water Storage Tank Rebate Program was developed to help customers improve their irrigation water system reliability through side storage. The minimum storage tank allowed through the rebate program is 500 gallons.

Turf Removal Rebate: NID's Turf Removal Rebate Program provides financial incentive to encourage residential treated water customers to remove turf grass and replace it with water efficient landscape. The rebate amount per residential meter is \$1 per square foot of converted turf up to \$1,000.

Water-saving tips

Typically, 40- to 50 percent of household water is used outdoors. Finding ways to conserve around the yard and garden can make a huge difference.

- Water early in the morning or later in the evening when temperatures are cooler. This can save 25 gallons each time you water
- Choose a water-efficient irrigation system, such as drip irrigation, for your trees, shrubs, and flowers. This can save 15 gallons each time you water
- Water deeply but less frequently to create healthier root systems and landscapes
- Replace lawns with native, drought-tolerant landscapes and plants. This saves 30-60 gallons when you water 1,000 sq. ft.



[More tips: NID Fact Sheet: Outdoor Water Efficiency](#)

“Plan for Water” is statewide finalist for excellence award

NID’s Plan for Water (PFW) has been honored as a statewide finalist for the Clair A. Hill Water Agency Award for Excellence, presented by the Association of California Water Agencies (ACWA).

The PFW process was lauded for stressing public collaboration to determine the best ways to meet the NID’s community demand for water over the coming decades.

The result of the 2.5-year process is strategic options that reflect a balanced mix of community perspectives.

The District’s Board of Directors will use the strategic options to make decisions going forward.

The Clair A. Hill Water Agency Award was presented during ACWA’s 2024 Spring Conference and Expo in Sacramento.



Representing NID: (left-right) Assistant General Manager Greg Jones, General Manager Jennifer Hanson, Communications Specialist Susan Lauer, and Director of Operations Chip Close. At the far right is ACWA Executive Director Dave Eggerton.

The annual award recognizes outstanding achievements by public water agencies. The award is sponsored by Jacobs in the name of founder Clair A. Hill.

The winner of the award was East Valley Water District (EVWD) for its Sterling Natural Resource Center, a 20-acre wastewater treatment and community facility in Highland, Ca. Along with NID, other finalists were Eastern Municipal Water District (Perris, Ca.) for its Grants and Loans Program and Turlock Irrigation District for its Upper Dawson Hydroelectric Facility.

In the Community



NID’s General Manager Jennifer Hanson shares information about the future of NID’s water supply at the Nevada County Farm Bureau Farm Tour on May 15.



Bowman Lake

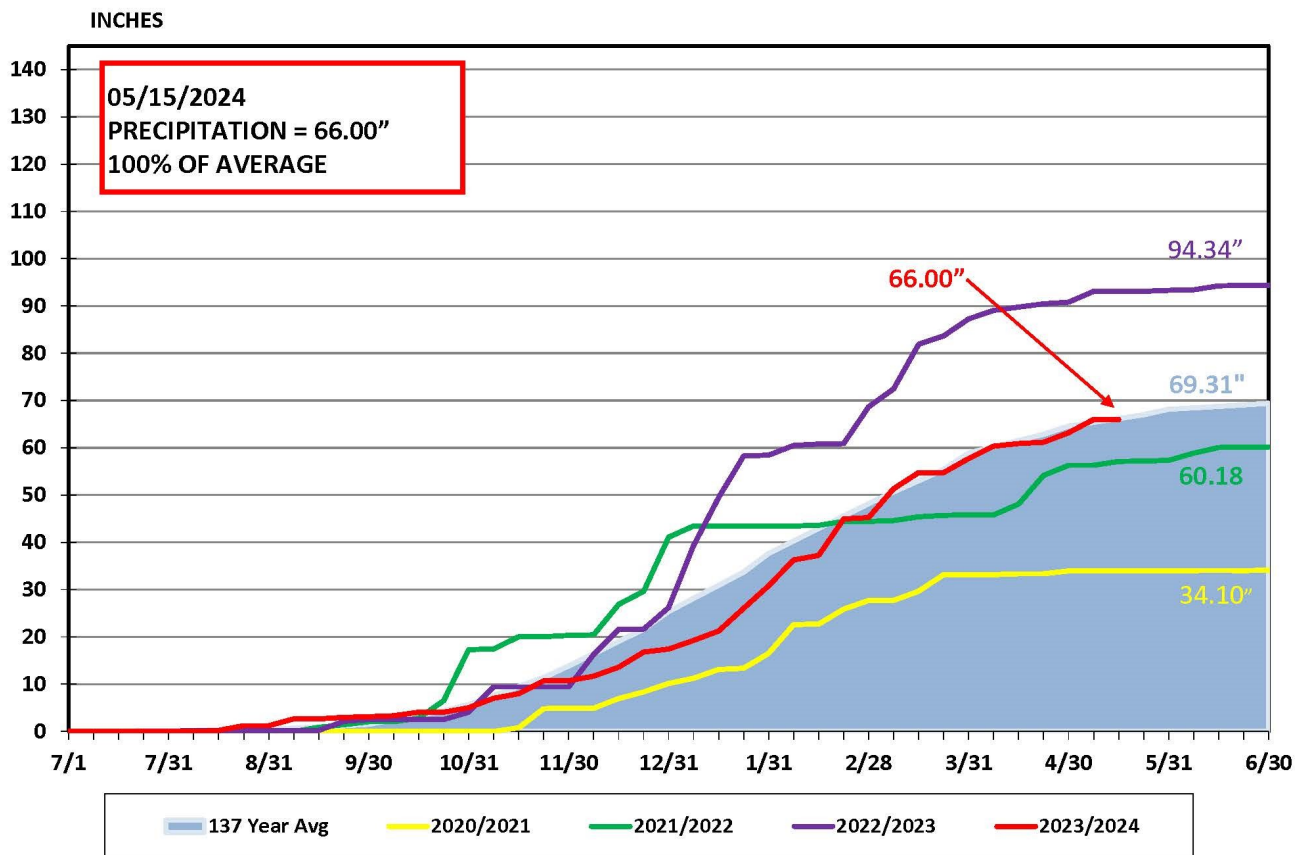
NID has been keeping weather records for Bowman Reservoir (elevation 5,650 ft.) since 1929.

The 69.2-inch annual average precipitation at Bowman compares to an annual average of 56 inches at 2,700 feet near Nevada City and 52 inches at 2,400 feet in Grass Valley.

Precipitation is measured for the 12-month period beginning July 1 and ending June 30.

As of May 15, 66 inches of precipitation had fallen at Bowman. That is 100 percent of average.

BOWMAN LAKE PRECIPITATION



Total reservoir storage is 95% of capacity

Reservoir storage is 256,675 acre-feet as of May 15. That is 95 percent of capacity and 107 percent of a 10-year average.

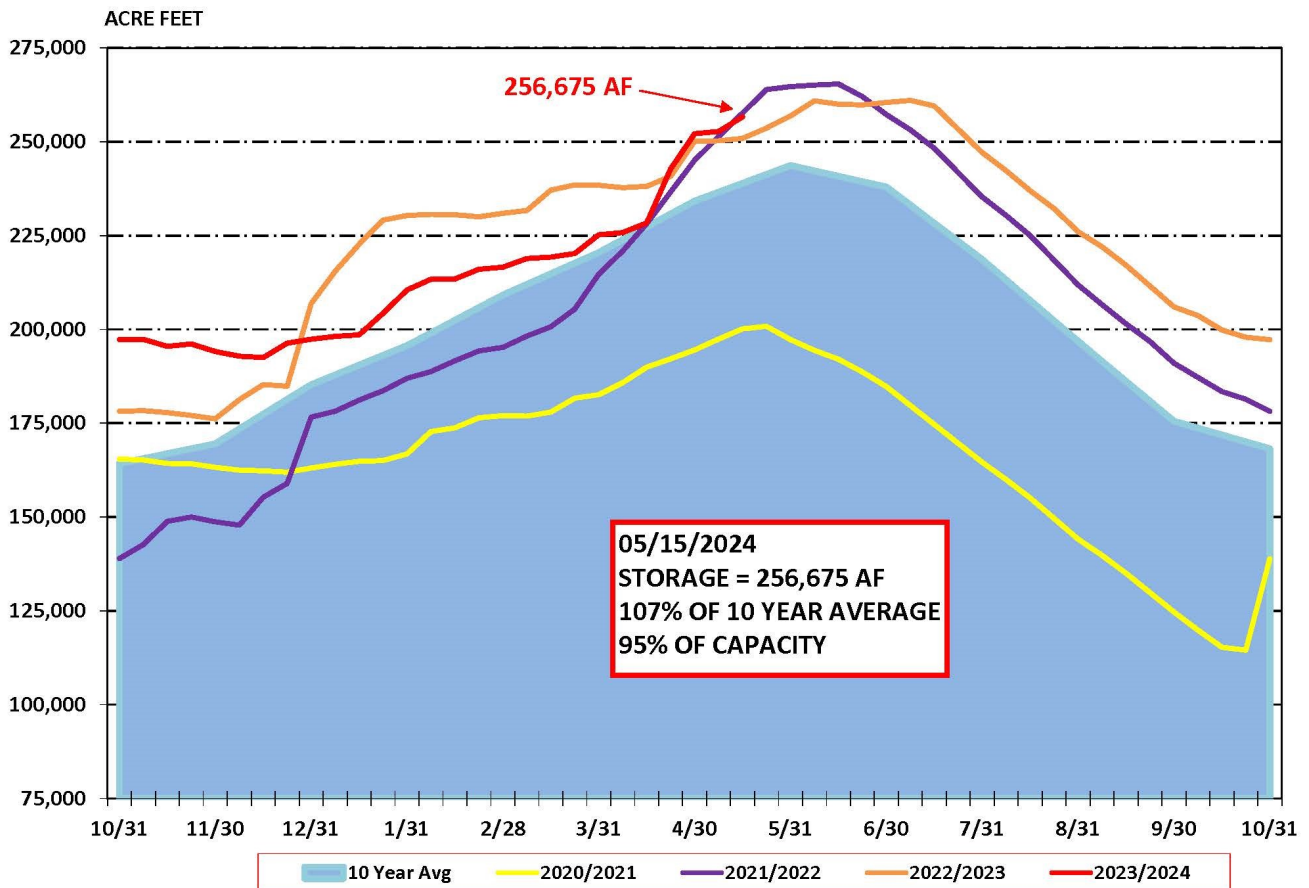
NID's water managers regularly post updates of local reservoir levels. You can see how water levels fluctuate in easy-to-read charts.

It's all just a click away on the NID website under [River & Reservoir Data](#).



Sawmill Lake

NID RESERVOIR STORAGE



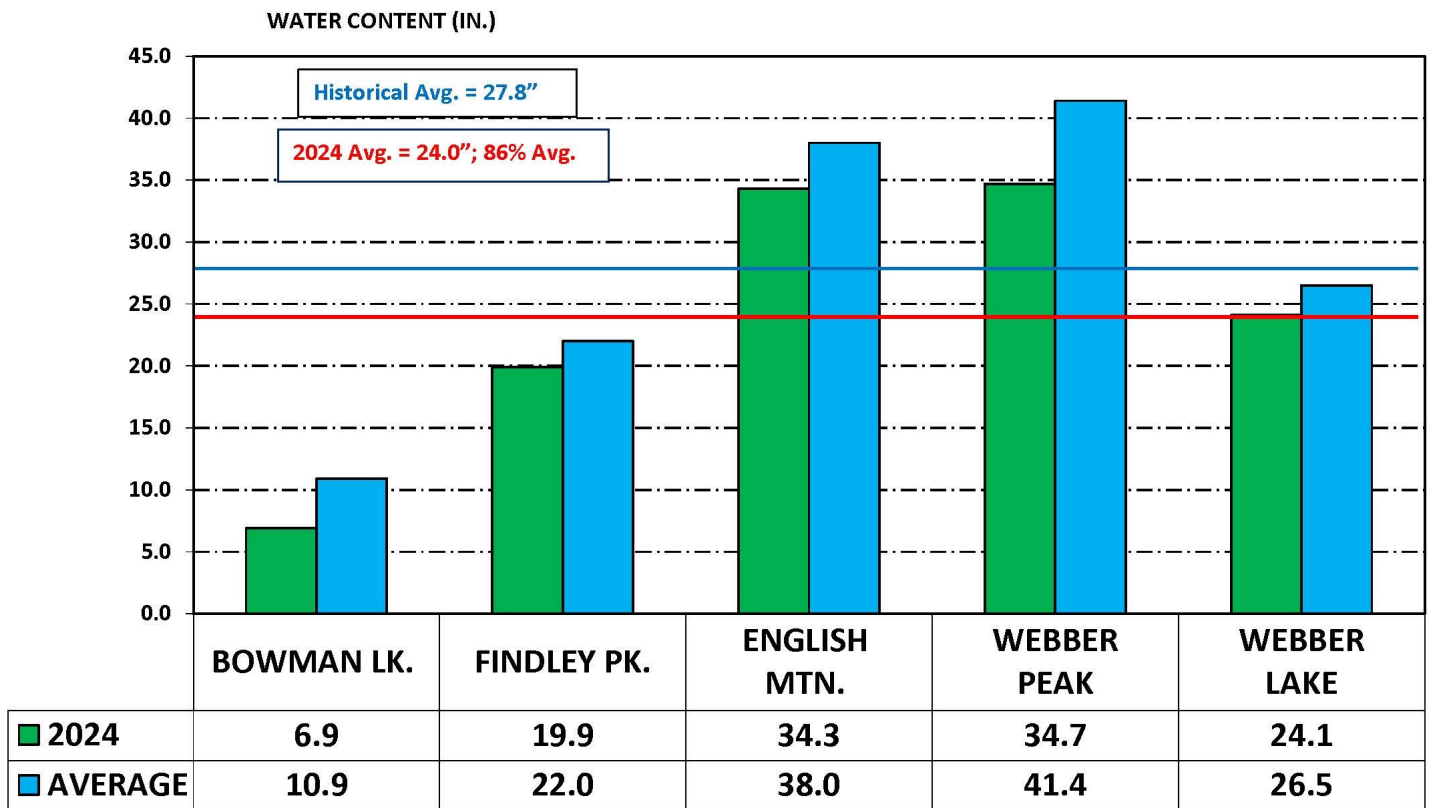
NID monthly snow survey: 86% of average

NID conducts its snow surveys on five snow courses of varying elevation that provide water to raw- and treated water customers.

Snow water equivalent is an indicator of how much water the snowpack contains. This helps water managers plan for water use.

NID is a member of the California Cooperative Snow Survey. Results of the District's snow surveys are used to predict water availability locally and statewide.

NID SNOW SURVEY May 1, 2024 WATER CONTENT



Project Updates - Engineering, Hydropower and Operations

The NID Engineering Department has a number of projects in various phases of construction.

Updated Project Status Reports are now available on the [District's Projects webpage](#). These reports provide project information, planner information, and a brief project description. Be sure to sign up for email news alerts about projects.

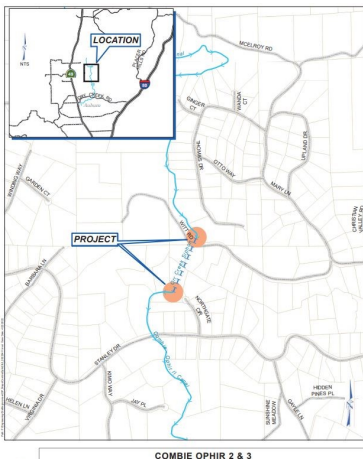
[Engineering Department Project Status Report for April, 2024](#)



North Day Road Pipeline Replacement Project

This project is located north of Highway 174 on North Day Road. It involves replacing the existing aged and deteriorating treated water pipe with approximately 3,820 feet of 8-inch pipeline, three fire hydrants, and 33 new service connections.

The project is projected to be completed in 2024. [Read more, click here.](#)



The Combie and Ophir 2 & 3 Siphon Replacement Project

The project involves design and construction of 853 linear feet (lf) of pipeline to replace the Orr Creek siphon, 3,292 lf of pipeline to replace Dry Creek siphon and 1,392 lf of pipeline to replace Rock Creek siphon.

All siphons require crossing of various creeks, Hwy 49, and hospital property, requiring extensive permitting and CEQA . [Read more, click here.](#)



North Auburn Treatment Plant

The project involves work to rebuild the motor control center for high-lift pumps and convert to variable frequency drives.

Short Videos

So what is infrastructure as it relates to NID and, ultimately, to you?

It includes dams, reservoirs, treatment facilities, canals, conduits and pipes, and powerhouses. That's a lot.

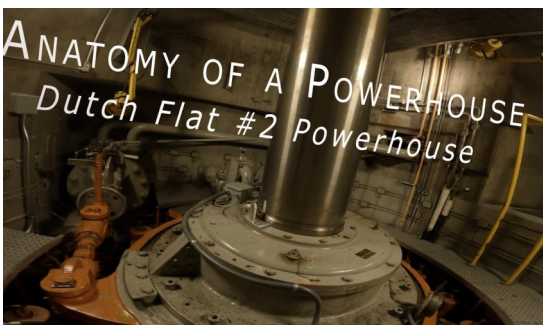
Through short videos we break it down. Our employees will tell you about their roles in keeping the NID system operating efficiently so you get reliable deliveries of water.



[South Yuba Canal: Maintaining the Legacy](#)

NID crews fortify and repair the all-important South Yuba Canal in March 2024. Take a front-row seat to see the work ... with incredible views and a clear perspective of what it takes to maintain the canal.

[Click here to watch \(2:52 minutes\)](#)

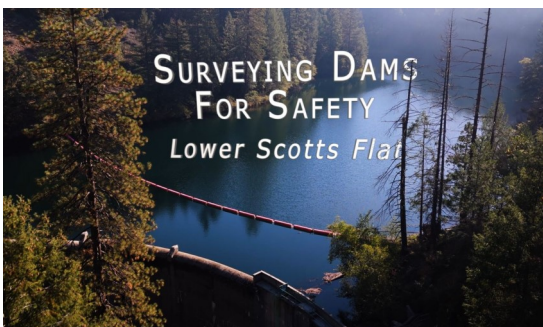


[Anatomy of a Powerhouse - "It's pretty unique"](#)

Come along for a tour inside the NID hydroelectric powerhouse at Dutch Flat.

Background: Dutch Flat No. 2 Powerhouse is an off-stream powerhouse on the Bear River. It was constructed in 1964-65 as part of the Yuba-Bear Hydropower Project.

[Click here to watch Anatomy of a Powerhouse \(1:41 min.\)](#)

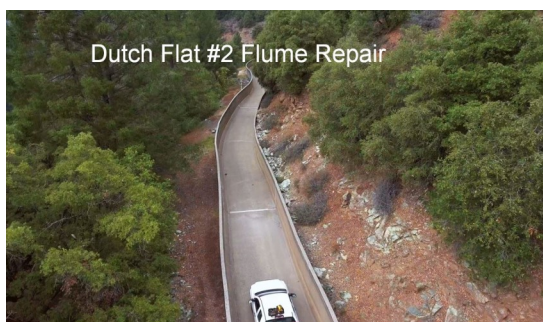


[Surveying Dams for Safety - "We used to just measure by stringline in the old days"](#)

As a safety measure, the NID survey team monitors the dam at Lower Scotts Flat to check for horizontal and vertical movement.

Background: NID surveyors constantly monitor the District's dams as a safety function. Data is logged over time to provide information regarding the effects of aging, earthquakes, erosion, storm events.

[So how is it done \(2:07 minutes\)? click here](#)



[Dutch Flat Flume Repair](#)

NID workers make repairs to the large Dutch Flat #2 flume. Trucks in the flume?

[Watch the video \(2:26 min.\)](#)

Meetings & Events



Board of Directors Meeting
Wednesday, May 22, 2024
NID Main Office, Grass Valley

Board of Directors Meeting
Wednesday, June 12, 2024
NID Main Office, Grass Valley

Board of Directors Meeting
Wednesday, June 26, 2024
NID Main Office, Grass Valley

*** Dates and times subject to change. Please check nidwater.com for updates*



Snowmelt at the Canyon Creek Diversion Dam, Head of the Bowman-Spaulding Canal, and Bowman House.