

NEVADA IRRIGATION DISTRICT

FLEET
MANAGEMENT

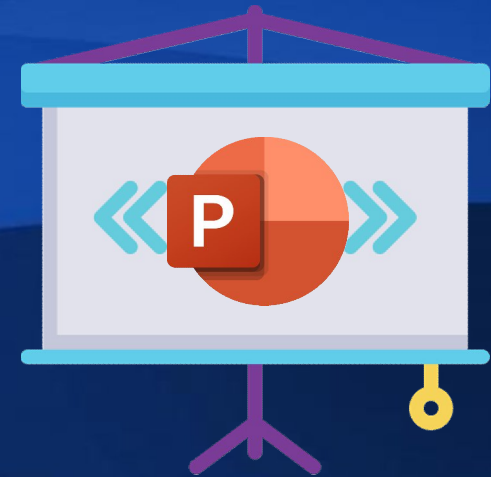
October 25, 2023

INTRODUCTION

Presenter

Jonathan Hoover

Equipment Mechanic Supervisor
Maintenance Department / Shop Operations



Objective

To review new CARB fleet regulations and how NID is evaluating and preparing for the future in all areas of “fleet management.”

OVERVIEW



- **Advanced Clean Fleets Regulation (ACFR)**
- **Small Off-Road Engine (SORE) Regulation**
- **Portable Equipment Registration Program (PERP) Regulation and Portable Engine Airborne Toxic Control Measure (ATCM)**
- **In-Use Off-Road Diesel-Fueled Fleets Regulation (Off-Road Regulation)**

REGULATIONS



ACFR – Advanced Clean Fleets Regulation

CARB is developing a medium and heavy-duty zero-emission fleet regulation with the goal of achieving a zero-emission truck and bus California fleet by 2045 everywhere feasible ... Certain agencies, including NID, have more aggressive / tiered compliance deadlines.

- **Applies to any state or local government agency with jurisdiction in California that owns, leases, or operates a vehicle with a manufacturer's gross vehicle weight rating (GVWR) greater than 8,500 lbs.**
- **Proposed Regulation Order: Section 2013 – State and Local Government Fleet Applicability, Definitions and General Requirements**

REGULATIONS

ACFR:

- Applies to 3/4-ton* pickup trucks and larger (1/2-tons are exempt), according to the following vehicle classifications:

Class 2b through 3 – GVWR >8,500 lbs. and ≤14,000 lbs.

Class 4 – GVWR >14,000 lbs. and ≤16,000 lbs.

Class 5 – GVWR >16,000 lbs. and ≤19,500 lbs.

Class 6 – GVWR >19,500 lbs. and ≤26,000 lbs.

Class 7 – GVWR >26,000 lbs. and ≤33,000 lbs.

Class 8 – GVWR >33,000 lbs.



* For reference purposes only, a 3/4-ton pickup truck is equivalent to a Ford F-250 or Dodge 2500.

≥ 3/4-ton Pickup
and Utility Bed



5-yard, 7-yard and
10-yard Dump



1-ton Dump



Vacuum



Water Tanker



Boom Crane



Truck Tractor with Low Bed Trailer



Dump with
Transfer Trailer



REGULATIONS

ACFR:

- CARB-designated “low population” counties
 - Nevada and Yuba are designated as low population counties
 - Placer is not designated as a low population county
 - Because NID’s operating area (jurisdiction) includes Placer County, NID must be compliant with certain CARB regulations on a more accelerated schedule than agencies that operate solely in counties designated as low population

REGULATIONS

ACFR:

- General Requirements

- Starting January 1, 2024

50% of the total number of vehicle additions to NID's fleet in each calendar year must be zero-emission vehicles (ZEVs)

- Starting January 1, 2027

100% of the total number of vehicle additions to NID's fleet in each calendar year must be ZEVs



REGULATIONS



SORE – Small Off-Road Engines Regulation

Small Off-Road Engines (SORE) are spark-ignition engines rated at or below 19 kilowatts (25 hp). The SORE regulation requires new engines to be certified and labeled to meet emission standards and other requirements.

- Requires emission standards of zero for most new engines, starting with model year **2024**
- Portable generators and pressure washers with an engine displacement greater than 225 cc are required to meet more stringent emission standards starting with model year **2024**, and emissions standards of zero starting with model year **2028**

REGULATIONS

SORE:

- Small off-road engines are used in lawn and garden equipment, portable generators, pressure washers, other outdoor power equipment and specialty vehicles



REGULATIONS

SORE:

- CARB does **not** regulate existing CARB-compliant small off-road engines
- Diesel engines and engines used in stationary equipment, including standby generators, are **not** subject to this regulation
- Equipment **excluded** from this regulation include: air compressors, chain saws ≥ 45 cc, other saws (concrete, masonry, cut-off), chippers, light towers, pumps ≥ 40 cc, shredders and grinders, stationary generators, stump grinders and welders

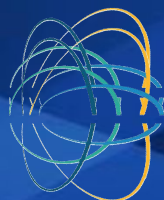


REGULATIONS



PERP – Portable Equipment Registration Program Regulation

Owners or Operators of portable engines and other types of equipment can register their units under PERP in order to operate their equipment throughout California without having to obtain individual permits from local air districts.



ATCM – Portable Engine Airborne Toxic Control Measure

The purpose of the ATCM is to reduce diesel particulate matter (PM) emission from portable diesel-fueled engines having a rated horsepower of 50 and greater (≥ 50 hp).

REGULATIONS

PERP & ATCM:

- NID has **portable** air compressors, brush chippers and generators registered with PERP



REGULATIONS

PERP & ATCM:

- All fleets are classified as either a **small fleet** (cumulative horsepower of ≤ 750), or a **large fleet** (cumulative horsepower of > 750)
- Small fleets must follow the tier phase-out schedule
- Large fleets must follow either the phase-out schedule or meet the fleet-average emission standards
- **NID is following the large fleet tier phase-out schedule**



Tier Phase-out Schedule

(required for small fleets, default option for large fleets)

Engine Certification	Engines rated 50 to 750 bhp		Engines rated >750 bhp
	Large Fleet	Small Fleet	
Tier 1	1/1/2020	1/1/2020	1/1/2022
Tier 2 built prior to 1/1/2009	1/1/2022	1/1/2023	1/1/2025
Tier 2 built on or after 1/1/2009	NA	NA	1/1/2027
Tier 3 built prior to 1/1/2009	1/1/2025	1/1/2027	NA
Tier 3 built on or after 1/1/2009	1/1/2027	1/1/2029	NA
Tier 1, 2, and 3 flexibility engines	December 31 of the year 17 years after the date of manufacture. This provision shall not apply to any engine operation before the effective date of this regulation.		

REGULATIONS



Off-Road Regulation – In-Use Off-Road Diesel-Fueled Fleets Regulation

The goal is to reduce particulate matter (PM) and oxides of nitrogen (NOx) emissions from in-use (existing) off-road heavy-duty diesel vehicles in California. The regulation covers a wide scope of vehicle types used in (but not limited to) industries as diverse as construction, air travel, manufacturing, landscaping, and ski resorts.

- **Applies to all self-propelled off-road diesel vehicles ≥ 25 hp used in California and most 2-engine vehicles (except on-road 2-engine sweepers), including vehicles that are rented or leased (rental or leased fleets)**
- **Not all of NID's off-road fleet is reportable to CARB**



Utility
Compaction
Roller
(asphalt and
off-road)

Sno-Cat



Compact
Loader
(Skid Steer)



Backhoe

Wheel Loader



Excavator



Dozer

Grader



REGULATIONS



RETIREMENT / REPLACEMENT

NID's process for retiring or replacing vehicles and equipment has evolved from a standard 10-year / 100,000 miles threshold to an individual scoring process, based on duty cycle and maintenance records.

Currently, NID utilizes the following:

- **NID Scoring Sheets**
- **CARB-Supplied Calculators**





CIP Project Information Sheet
2024-2028 Annual Budget

Project Name: _____ Project No.: _____

Dept. _____ Asset #: _____ Priority Ranking: 0

Facility: _____ Facility #: _____ Division #: _____

Project Manager: _____ Constructed by: To be determined

New Construction: _____ Replacement: _____ Upgrades: _____ Multiple Phases: _____

CEQA: _____ Permits: _____ ROW: _____

Project Purpose: (Problem Statement)

Project Description: (Proposed Solution)

Basis for Priority:

Notes:

Expenditures:

Expense	Prior Years Actual	Amendments (to original project budget)	2024	2025	2026	2027	2028	TOTAL
Consulting/Studies								0
Design/Engineering								0
Permitting/CEQA								0
Construction								0
Right of Way								0
Other:								0
Total:	0	0	0	0	0	0	0	0

Funding Sources

Source	Prior Year Actual	Amendments (to original project budget)	2024	2025	2026	2027	2028	TOTAL
								0
								0
Total:	0	0	0	0	0	0	0	0

Capital Improvement Project Scoring Sheet

Project Name: _____ Project No.: _____

Criteria	Scoring	Score
1. Capital Costs	10 Points = Lower Future Capital Costs 5 Points = No Impact 0 Points = Higher Future Capital Costs	
2. Annual O & M Costs	10 Points = Lower Operating Costs 5 Points = No Impact 0 Points = Higher Operating Costs	
3. Increased Revenue Potential	10 Points = Higher Revenues 5 Points = No Impact 0 Points = Lower Revenues	
4. Health & Safety	10 Points = Reduces Threat/Impact to Health & Safety 5 Points = No Impact 0 Points = Increases Threat/Impact to Health & Safety	
5. Environmental	10 Points = Improves/Reduces Impacts to Environment 5 Points = No Impact 0 Points = Increases Threat/Impact to Environment	
6. Distributional or Hydro Generation Effects	10 Points = Project has Regional Benefit or Improves Generation 5 Points = Project has Limited Benefit or Improved Generation 0 Points = No Impact	
7. Critical Infrastructure and Risk to Service Disruption.	10 Points = Deferral will Significantly Impact Disruption to Service 5 Points = Deferral will Moderately Impact Disruption to Service 0 Points = No Impact if Deferred	
8. Board Strategic Plan/Goals	10 Points = Meets Strategic Plan/Goals Set by the Board 5 Points = Important Project, but Not Critical 0 Points = Does Not Meet Strategic Plan/Goals of the Board	
9. Certainty of Project Funding	5 Points = Funded by Existing Revenue Source 2-3 Points = Requires Outside Funds High Likelihood of Obtaining 0 Points = Requires Outside Funding Low Likelihood of Obtaining	
10. Associated Revenue to Offset Maintenance Costs	5 Points = Will Have Associated Revenue to Offset Maintenance Costs 2-3 Points = Will Have Associated Revenue to Offset Some Costs 0 Points = Asset Will Have No Change to Associated Revenue	
11. Improves and/or Increases Level of Service	10 Points = Project Improves Level of Service 5 Points = Project Maintains Existing Level of Service 0 Points = Project Impacts Existing Level of Service	
Max Score: 100	Total Prioritization Score:	0

Factors:	Points
Age	1 point for each year of service.
Miles/hrs.	1 point/10,000 miles
Service type	1 point for light duty, up to 5 points for severe service.
Reliability	1-5 points for frequency of repairs needed. 1 point for 1 repair/6 months, 5 points for 1 or more repairs/month
Lifetime repair costs	1-5 points based on total maintenance and repair costs 1 point/10% purchase price
Condition and use	1-5 points for overall condition and usefulness

Points Ranges		
under 18	Condition I	Excellent
18 - 27	Condition II	Good
over 27	Condition III	Replacement

Updated basis, where applicable

PRICES ARE INCREASED 5% ANNUALLY FOR INFLATION
TENTATIVE SCHEDULE FOR REPLACEMENT

Year	Vehicle/Equipment # Description	Miles/Hrs.	Mileage date	Age score	Miles/Hrs score	Service Type	Reliability	Lifetime Repair Cost	Condition And Usefulness	Dept or Division	Eval Score	Service life left	Original Cost or updated basis	Designation	22/23	23/24	24/25	25/26	26/27	Comment
											0	27								
											0	27			0	0	0	0	0	0
2014	10614 2014 Ford F150	131424	8/19/22	9	13	2	1	3	2	OPS	30	-3	22385		31339	32458	33578	34697	35816	
2015	10694 2015 Ford F150	139563	8/21/22	8	14	2	1	3	2	OPS	30	-3	24073		32499	33702	34906	36110	37313	
2015	10692 2015 Ford F150	124299	8/21/22	8	12	2	1	3	2	OPS	28	-1	24073		32499	33702	34906	36110	37313	
2015	10690 2015 Ford F150	118485	8/18/22	8	12	2	1	3	2	OPS	28	-1	24073		32499	33702	34906	36110	37313	
2013	10533 2013 Ford F150	122477	8/22/22	10	12	2	1	3	2	OPS	30	-3	21866		31706	32799	33892	34986	36079	
2016	10722 2016 Ford F150	120866	7/31/22	7	12	2	1	3	2	OPS	27	0	23470		30511	31685	32858	34032	35205	
				0	0						0	27				0	0	0	0	0
				0	0						0	27			0	0	0	0	0	0
2008	H5185 2008 Toyota Tundra	140897	8/9/22	15	14	4	1	1	2	HYDRO	37	-10	27261		46344	47707	49070	50433	51796	
2014	H5372 2014 Ford F150	143122	8/9/22	9	14	4	1	3	2	HYDRO	33	-6	25862		36207	37500	38793	40086	41379	
2014	H5373 2014 Ford F15-	145596	8/9/22	9	15	4	1	3	2	HYDRO	34	-7	25862		36207	37500	38793	40086	41379	
2016	H5438 2016 Polaris Ranger	8400	8/9/22	7	8	4	4	4	3	HYDRO	30	-3	22589		29366	30495	31625	32754	33884	8-10,000 Mile life
				0	0						0	27			0	0	0	0	0	
				0	0						0	27			0	0	0	0	0	
				0	0						0	27			0	0	0	0	0	
2007	9648 2007 GMC 3500 FB	93739	8/22/22	16	9	4	3	5	4	MAINT	41	-14	28921		50612	52058	53504	54950	56396	
2000	8627 2000 Ford F350 DUMP	138780	8/3/22	23	14	3	3	5	4	MAINT	52	-25	32672		68611	70245	71878	73512	75146	
2008	9913 2008 Ford F350 Dump	97756	8/16/22	15	10	3	1	4	4	MAINT	37	-10	40342		68581	70599	72616	74633	76650	
2011	10261 2011 Ford F350 Dump	101940	8/17/22	12	10	3	2	5	4	MAINT	36	-9	43386		67248	69418	71587	73756	75926	
2012	10439 2012 JD 35D Excavator	6554	3/10/22	11	26	4	3	5	3	MAINT	52	-25	50817		76226	78766	81307	83848	86389	
2009	10096 2009 CAT 308D Excavator	7726	7/20/22	14	15	4	3	5	3	MAINT	44	-17	96058		158496	163299	168102	172904	177707	
2013	10461 2013 JD 825i GATOR XUV	2971	11/22/21	10	6	3	4	5	2	VEG	30	-3	12324		17870	18486	19102	19718	20335	ODO in HOURS
2022				1	0						1	26			0	0	0	0	0	
2009	10003 2009 KW 5YD Dump (2022)	80456	8/8/22	14	8	3	1	4	3	MAINT	33	-6	80960		133584	137632	141680	145728	149776	
2009	10004 2009 KW 5D Dump (2022)	89519	8/1/22	14	9	3	1	4	3	MAINT	34	-7	80960		133584	137632	141680	145728	149776	
2022				1	0						1	26			0	0	0	0	0	
2022				1	0						1	26			0	0	0	0	0	
2022				1	0						1	26			0	0	0	0	0	
2022				1	0						1	26			0	0	0	0	0	
2022				1	0						1	26			0	0	0	0	0	
2022				1	0						1	26			0	0	0	0	0	
2022				1	0						1	26			0	0	0	0	0	
2023				2023	0						2023	-1996			0	0	0	0	0	
2023				2023	0						2023	-1996			0	0	0	0	0	
2023				2023	0						2023	-1996			0	0	0	0	0	

CARB Calculator – Off-Road Fleet Compliance by 1/1/2025

Potentially Eligible for Optional Compliance Schedule?		No		CARB Calculator – Off-Road Fleet Compliance by 1/1/2025											
Recent Addition of a Restricted Vehicle?		No													
Presence of Tier 0 or Tier 1 Not Designated as Permanent Low-Low?		Yes		Click Here for a Quick Tip on How to Use This Calculator						Generating BACT Credits					
All Remaining Vehicles Exempt from this Year's BACT Requirement?				Please Click on Headings for Pop-Up Information											
Federal or State-Owned Fleet?				Actions taken on fleet between January 1, 2024 and December 31, 2024											
Total Fleet Horsepower (for Fleet Size Category)	Fleet Size Category	Horsepower (Used for Next Year's BACT Requirement Determination)	2025 Fleet Average Index	2025 Fleet Average Target	1/1/2025 Fleet Average Target Met?	2025 BACT Requirement	Smallest Engine Rounding Carried Over from 1/1/2024 Compliance Date	Total 2025 BACT Requirement	BACT Credits Earned For 2025	User Input Extra BACT Credits Carried Over for 1/1/2025	Total BACT Credits Available for 2025	Additional BACT Credits Needed for 2025	1/1/2025 BACT Met?	Smallest Engine Rounding Carried Over to 1/1/2026	Extra BACT Credit for 1/1/2026
2476	Small	2476	3.5	3.4	★ NO	247		247	0		0	247	★ NO	0	0
Vehicle EIN	Your Vehicle Number	Vehicle Type	Engine Model Year (Required)	Engine Horsepower (Required)	Retired or Low-Use Designations	On-Road Engine	PM VDECS Level	NOx VDECS % Reduction	Purchase Year / Type if Electric	Emission Factor if Non-Standard	Other Designations	Engine Tier	Emission Factor	Effect on Fleet Avg. Index	Target Factor
VU8Y94	17861LXXKX35191	H5476	2019	113								T4	0.3	-0.3	3.1
TV5G67	FJX01636	10623	2014	65								T4	3.0	-0.1	4.2
TN5D94	2X401416	10934	2018	36								T4	3.0	0.0	4.1
SU9S76	32598	10471	2008	37								T4I	4.9	0.0	4.1
SU5M57	CYM09850	10093	2009	84								T3	3.0	0.0	3.4
RT6F49	LTE03677	10840	2017	148								T4	0.3	-0.4	3.1
RP4Y65	FF080C7011723	9711	2006	52								T2	4.9	0.0	4.2
RJ8S64	CYM09903	10094	2009	84								T3	3.0	0.0	3.4
RE8G97	U599198A	8339	1996	86								T0	9.9	0.6	3.4
RC9X48	46262852	H0452	2003	130								T2	4.3	0.2	3.1
NW6A43	76522	8986	2002	32								T1	6.2	0.1	4.1
MPSY46	2016R844	H5456	2016	130								T4	0.3	-0.4	3.1
LJ6M88	T04045TT061	8844	1998	70								T1	6.9	0.2	4.2
KW6S44	5081D40459K97	H0322	1997	70								T0	9.9	0.4	4.2
KL7S64	RLN00351	10103	2009	110								T3	2.6	-0.1	3.1
HW3V69	RG6076T568187	9138	1996	185								T1	6.9	0.7	2.9
GY6D63	FTL08963	10750	2016	73								T4	3.0	-0.1	4.2
GL9U53	0H8W00562	H5520	2021	73								T4	3.0	-0.1	4.2
GK3X44	08830C9988A191	10520	2014	153								T4I	2.5	-0.1	3.1
DU7C66	T0410J8161987	9980	2008	99								T3	3.0	0.0	3.4
DB7V95	D0269422	9055	1998	30								T0	7.1	0.1	4.1
CT8S78	0SL400457	11124	2021	73								T4	3.0	-0.1	4.2
CNSY74	17861LXXKX35191	11051	2020	113								T4	0.3	-0.3	3.1
CM6W53	T06068T700245	8580	1997	148								T1	6.9	0.6	3.1
CF6P63	4M40TLU3A	10096	2008	58								T4I	3.0	-0.1	4.2
CA6E43	17861LXXKX35191	11080	2021	113								T4	0.3	-0.3	3.1
AP7H59	HW000354	10666	2015	110								T4	0.3	-0.3	3.1

- Yes or No fields (★) represent NID's current fleet status
- Engine Tier
- Effect on Fleet Average Index
- Red are worst offenders and need to be replaced

CARB Calculator – Off-Road Fleet Compliance by 1/1/2029

Potentially Eligible for Optional Compliance Schedule?		No													
Recent Addition of a Restricted Vehicle?		No													
Presence of Tier 0 or Tier 1 Not Designated as Permanent Low-		Yes													
		Click Here for a Quick Tip on How to Use This Calculator	Generating BACT Credits												
All Remaining Vehicles Exempt from this Year's BACT Requirement		Please Click on Headings for Pop-Up Information													
Federal or State-Owned Fleet?		Actions taken on fleet between January 1, 2028 and December 31, 2028													
Total Fleet Horsepower (for Fleet Size Category)	Fleet Size Category	Horsepower (Used for Next Year's BACT Requirement Determination)	2029 Fleet Average Index	2029 Fleet Average Target	1/1/2029 Fleet Average Target Met?	2029 BACT Requirement	Smallest Engine Rounding Carried Over from 1/1/2028 Compliance Date	Total 2029 BACT Requirement	BACT Credits Earned For 2029	Extra BACT Credits Carried Over for 1/1/2029	Total BACT Credits Available for 2030	Additional BACT Credits Needed for 2029	1/1/2029 BACT Met?	Engine Rounding Carried Over to 1/1/2030	Extra BACT Credit for 1/1/2030
1834	Small	1834	1.7	1.8	★ YES	0		0	0	0	0	0	★ N/A	0	0
Vehicle EIN	Your Vehicle Number	Vehicle Type	Engine Model Year (Required)	Horsepower (Required)	Retired or Low-Use Designations	On-Road Engine	PM VDECS Level	NOx VDECS % Reduction	Year / Type if Electric	Emission Factor if Non Standard	Other Designations	Engine Tier	Emission Factor	Fleet Avg. Index	Target Factor
VU8Y94	177410LXXXX9101	H5476	2019	113								T4	0.3	-0.1	1.3
TV5G67	FJX01636	10623	2014	65								T4	3.0	0.0	3.0
TN5D94	2X401416	10334	2018	36								T4	3.0	0.0	3.3
SU9S76	32598	10471	2008	37								T4I	4.9	0.1	3.3
SU5M57	CYM09850	10093	2009	84	Retired							T3	3.0	N/A	1.4
RT6F49	LTE03677	10840	2017	148								T4	0.3	-0.1	1.3
RP4Y65	FF080CY011728	9711	2006	52	Retired							T2	4.9	N/A	3.0
RJ8S64	CYM09903	10094	2009	84	Retired							T3	3.0	N/A	1.4
RE8G97	U599198A	8339	1996	86	Retired							T0	9.9	N/A	1.4
RC9X48	46262852	H0452	2003	130								T2	4.3	0.4	1.3
Nw6A43	76522	8986	2002	32								T1	6.2	0.1	3.3
MP5Y46	2016R844	H5456	2016	130								T4	0.3	-0.1	1.3
LJ6M88	T04045TT061	8844	1998	70	Retired							T1	6.9	N/A	3.0
Kw6S44	5081D40459K37	H0322	1997	70	Retired							T0	9.9	N/A	3.0
KL7S64	RLN00351	10103	2009	110	Retired							T3	2.6	N/A	1.3
Hw3V69	RG6076T568187	9138	1996	185	Permanent							T1	6.9	N/A	1.5
GY6D63	FTL08963	10750	2016	73								T4	3.0	0.0	3.0
GL9U53	0H8W00562	H5520	2021	73								T4	3.0	0.0	3.0
GK3X44	10W32K23P E2551924	10520	2014	153								T4I	2.5	0.2	1.3
DU7C66	T0410JX161987	9980	2008	99								T3	3.0	0.2	1.4
DB7V95	D0289422	9055	1998	30	Retired							T0	7.1	N/A	3.3
CT8S78	OSL400457	11124	2021	73								T4	3.0	0.0	3.0
CN3Y74	177410LXXXX9101	11051	2020	113								T4	0.3	-0.1	1.3
CM6W53	T06068T700245	8580	1997	148	Permanent							T1	6.9	N/A	1.3
CF6P63	4M40TLU3A	10096	2008	58	Retired							T4I	3.0	N/A	3.0
CA6E43	177410LXXXX9101	11080	2021	113								T4	0.3	-0.1	1.3
AP7H59	HW000354	10666	2015	110								T4	0.3	-0.1	1.3
		NEW	2023	65								T4	3.0	0.0	3.0
		NEW	2024	110								T4	0.3	-0.1	1.3
		NEW	2025	80								T4	0.3	-0.1	1.4
		NEW	2025	80								T4	0.3	-0.1	1.4

Example of Potential Compliance Route

Potentially Eligible for Optional Compliance Schedule?		No	Compliance by 1/1/2025							
Recent Addition of a Restricted Vehicle?		No	Generating BACT Credits							
Presence of Tier 0 or Tier 1 Not Designated as Permanent Low-Use?		Yes	Information							
All Remaining Vehicles Exempt from this Year's BACT Requirement?			January and December 31, 2024							
Federal or State-Owned Fleet?										
Total Fleet Horsepower (for Fleet Size Category)	Fleet Size Category	Horsepower (Used for Next Year's BACT Requirement Determination)	2025 Fleet Average Index	2025 Fleet Average Target	1/1/2025 Fleet Average Target Met?	Additional BACT Credits Needed for 2025	1/1/2025 BACT Met?	Smallest Engine Rounding Carried Over to 1/1/2026	Extra BACT Credit for 1/1/2026	
2476	Small	2476	3.5	3.4	NO	247	NO	0	0	
Vehicle EIN	Your Vehicle Number	Vehicle Type	Engine Model Year (Required)	Engine Horsepower (Required)	Retired or Low-Use Designations	Engine Tier	Emission Factor	Effect on Fleet Avg. Index	Target Factor	
VU8Y94	1780123030101	H5476	2019	113		T4	0.3	-0.3	3.1	
TV5G67	FJX01636	10623	2014	65		T4	3.0	-0.1	4.2	
TN5D94	2X401416	10934	2018	36		T4	3.0	0.0	4.1	
SU9S76	32598	10471	2008	37		T4I	4.9	0.0	4.1	
SUSM57	CYM09850	10093	2009	84		T3	3.0	0.0	3.4	
RT6F49	LTE03677	10840	2017	148		T4	0.3	-0.4	3.1	
RP4Y65	FF080CY011728	9711	2006	52		T2	4.9	0.0	4.2	
RJ8S64	CYM09903	10094	2009	84		T3	3.0	0.0	3.4	
RE8G97	U599198A	8339	1996	86		T0	9.9	0.6	3.4	
RC9X48	46262852	H0452	2003	130		T2	4.3	0.2	3.1	
Nw6A43	76522	8986	2002	32		T1	6.2	0.1	4.1	
MPSY46	2016R844	H5456	2016	130		T4	0.3	-0.4	3.1	
LJ6M88	T04045TT061	8844	1998	70		T1	6.9	0.2	4.2	
KW6S44	5081D40459K97	H0322	1997	70		T0	9.9	0.4	4.2	
KL7S64	RLN00351	10103	2009	110		T3	2.6	-0.1	3.1	
Hw3V63	RG6076T568187	9138	1996	185		T1	6.9	0.7	2.9	
GY6D63	FTL08963	10750	2016	73		T4	3.0	-0.1	4.2	
GL9U53	0H8W00562	H5520	2021	73		T4	3.0	-0.1	4.2	
GK3X44	10520	153	2014	153		T4I	2.5	-0.1	3.1	
DU7C66	T0410JX161987	9980	2008	99		T3	3.0	0.0	3.4	
DB7V95	D0289422	9055	1998	30		T0	7.1	0.1	4.1	
CT8S78	OSL400457	11124	2021	73		T4	3.0	-0.1	4.2	
CN9Y74	11051	113	2020	113		T4	0.3	-0.3	3.1	
CM6W53	T06068T00245	8580	1997	148		T1	6.9	0.6	3.1	
CF6P63	4M40TLU3A	10096	2008	58		T4I	3.0	-0.1	4.2	
CABE43	11080	113	2021	113		T4	0.3	-0.3	3.1	
AP7H53	HwD00354	10666	2015	110		T4	0.3	-0.3	3.1	

Potentially Eligible for Optional Compliance Schedule?		No	Compliance by 1/1/2029							
Recent Addition of a Restricted Vehicle?		No	Generating BACT Credits							
Presence of Tier 0 or Tier 1 Not Designated as Permanent Low-Use?		Yes	Information							
All Remaining Vehicles Exempt from this Year's BACT Requirement?			January and December 31, 2028							
Federal or State-Owned Fleet?										
Total Fleet Horsepower (for Fleet Size Category)	Fleet Size Category	Horsepower (Used for Next Year's BACT Requirement Determination)	2029 Fleet Average Index	2029 Fleet Average Target	1/1/2029 Fleet Average Target Met?	Additional BACT Credits Needed for 2029	1/1/2029 BACT Met?	Engine Rounding Carried Over to 1/1/2030	Extra BACT Credit for 1/1/2030	
1834	Small	1834	1.7	1.8	YES	0	N/A	0	0	
Vehicle EIN	Your Vehicle Number	Vehicle Type	Engine Model Year (Required)	Horsepower (Required)	Retired or Low-Use Designations	Engine Tier	Emission Factor	Fleet Avg. Index	Target Factor	
VU8Y94	1780123030101	H5476	2019	113		T4	0.3	-0.1	1.3	
TV5G67	FJX01636	10623	2014	65		T4	3.0	0.0	3.0	
TN5D94	2X401416	10934	2018	36		T4	3.0	0.0	3.3	
SU9S76	32598	10471	2008	37		T4I	4.9	0.1	3.3	
SUSM57	CYM09850	10093	2009	84	Retired	T3	3.0	N/A	1.4	
RT6F49	LTE03677	10840	2017	148		T4	0.3	-0.1	1.3	
RP4Y65	FF080CY011728	9711	2006	52	Retired	T2	4.9	N/A	3.0	
RJ8S64	CYM09903	10094	2009	84	Retired	T3	3.0	N/A	1.4	
RE8G97	U599198A	8339	1996	86	Retired	T0	9.9	N/A	1.4	
RC9X48	46262852	H0452	2003	130		T2	4.3	0.4	1.3	
Nw6A43	76522	8986	2002	32		T1	6.2	0.1	3.3	
MPSY46	2016R844	H5456	2016	130		T4	0.3	-0.1	1.3	
LJ6M88	T04045TT061	8844	1998	70	Retired	T1	6.9	N/A	3.0	
KW6S44	5081D40459K97	H0322	1997	70	Retired	T0	9.9	N/A	3.0	
KL7S64	RLN00351	10103	2009	110		T3	2.6	N/A	1.3	
Hw3V63	RG6076T568187	9138	1996	185	Permanent	T1	6.9	N/A	1.5	
GY6D63	FTL08963	10750	2016	73		T4	3.0	0.0	3.0	
GL9U53	0H8W00562	H5520	2021	73		T4	3.0	0.0	3.0	
GK3X44	10520	153	2014	153		T4I	2.5	0.2	1.3	
DU7C66	T0410JX161987	9980	2008	99		T3	3.0	0.2	1.4	
DB7V95	D0289422	9055	1998	30	Retired	T0	7.1	N/A	3.3	
CT8S78	OSL400457	11124	2021	73		T4	3.0	0.0	3.0	
CN9Y74	11051	113	2020	113		T4	0.3	-0.1	1.3	
CM6W53	T06068T00245	8580	1997	148	Permanent	T1	6.9	N/A	1.3	
CF6P63	4M40TLU3A	10096	2008	58	Retired	T4I	3.0	N/A	3.0	
CABE43	11080	113	2021	113		T4	0.3	-0.1	1.3	
AP7H53	HwD00354	10666	2015	110		T4	0.3	-0.1	1.3	
		NEW	2023	65		T4	3.0	0.0	3.0	
		NEW	2024	110		T4	0.3	-0.1	1.3	
		NEW	2025	80		T4	0.3	-0.1	1.4	
		NEW	2025	80		T4	0.3	-0.1	1.4	

QUESTIONS & COMMENTS



NEVADA IRRIGATION DISTRICT

Thank you...