

# Staff Report

for the Board of Directors' Meeting of May 23, 2018

**TO:** Board of Directors

**FROM:** Chip Close, Water Operations Manager  
Shannon Wood, Business Services Technician

**DATE:** May 15, 2018

**SUBJECT:** Iron Horse/Brewer Road District Financed Waterline Extension

---

---

## *OPERATIONS*

### **RECOMMENDATION:**

Encumber funds for the Iron Horse/Brewer Road District Financed Waterline Extension project, as recommended by the Administrative Practices Committee.

### **BACKGROUND:**

The District received a petition signed by twelve (12) landowners to extend treated water from Armstrong Road to Iron Horse Drive and continuing east on Brewer Road. The signed petition meets the 50 percent threshold and the area has been mapped using the current policy methods.

The Engineering Committee recognized this group March 21, 2017. The project proposes approximately 7,650 lf of 8-inch pipe, potentially serving 21 parcels of which 18 are mainline connections and 3 variance connections. It appears that there is one (1) vacant parcel. The total not-to-exceed cost per participant, including meter, is \$79,377.

The Administrative Practices Committee reviewed the project at the May 1, 2018 meeting. The committee unanimously agreed to advance to the Board of Directors to encumber funds as appropriate.

**BUDGETARY IMPACT:** The overall project estimate is \$1,515,876 of which \$55,210 will be District participation and \$26,249 collected from previous Temporary Service Location connections leaving the balance to be recovered through DFWLE Funding Agreements or future District Reimbursement as follows:

Total Project Estimate: \$1,515,876

Community Investment Stabilization Fund (District Participation): \$55,210

Temporary Service Location Funds (previously collected): \$26,249

Community Investment Stabilization Fund (Property Owner Participation): \$1,434,417

Reimbursement Potential:

Cash Deposit (Good Faith Deposit 11 @ \$7,938): \$87,318 – beginning of project

Deferred Revenue (minimum of 11 @ \$60,368): \$664,048 – over 30 years

Future Reimbursement (10 parcels @ \$68,306): \$683,060 – at request of meter(s)

CC/sm

Attachments (2):

- Project Estimate
- Area Map

## IRON HORSE-BREWER ROAD WATER LINE EXTENSION

### ADMINISTRATION

	Description	Quantity	Unit Cost	Total Cost	District Participation		Project Participant Costs	
					Transmission & Storage Facilities <sup>1</sup>	Community Investment Funds		
Up-Front	Preliminary engineering study (Labor)	1	ls	\$500	\$500	\$0	\$500	\$0
	Engineering administration (Labor)	1	ls	\$1,500	\$1,500	\$0	\$1,500	\$0
	Survey and Engineering (Consultant)	1	ls	\$10,000	\$2,500	\$0	\$2,500	\$0
	Right of way (Labor)	1	ls	\$1,000	\$1,000	\$0	\$1,000	\$0
	Engineering/Administration Subtotal				\$5,500	\$0	\$5,500	\$0
	Burden on Payroll (Labor only)	47	%		\$1,410	\$0	\$1,410	\$0
	<i>Subtotal</i>				\$6,910	\$0	\$6,910	\$0
After Agreement	Contract administration (Labor)	1	ls	\$3,000	\$3,000	\$0	\$0	\$3,000
	Engineering administration (Labor)	1	ls	\$10,000	\$10,000	\$0	\$0	\$10,000
	Engineering (Consulting fees)	1	ls	\$0	\$0	\$0	\$0	\$0
	Drafting (Labor)	1	ls	\$5,000	\$5,000	\$0	\$0	\$5,000
	Survey (Labor)	1	ls	\$10,000	\$10,000	\$0	\$0	\$10,000
	Inspection (Labor)	1	ls	\$10,000	\$10,000	\$0	\$0	\$10,000
	Right of way (Labor)	1	ls	\$5,000	\$5,000	\$0	\$0	\$5,000
	Right of way (Acquisition) <sup>2</sup>	1	ls	\$90,000	\$90,000	\$0	\$0	\$90,000
	Right of way (Consultant)	0	ls	\$0	\$0	\$0	\$0	\$0
	CEQA administration (Labor) <sup>3</sup>	1	ls	\$1,000	\$1,000	\$0	\$0	\$1,000
	Fish & Game, CEQA, & Recording Fees	0	ls	\$3,000	\$0	\$0	\$0	\$0
	Engineering/Administration Subtotal				\$134,000	\$0	\$0	\$134,000
		Burden on Payroll (Labor only)	47	%		\$20,680	\$0	\$0
	<i>Subtotal</i>				\$154,680	\$0	\$0	\$154,680
<b>Administration Subtotal</b>					<b>\$161,590</b>	<b>\$0</b>	<b>\$6,910</b>	<b>\$154,680</b>

### CONSTRUCTION

	Description	Quantity	Unit Cost	Total Cost	District Participation		Project Participant Costs	
					Transmission & Storage Facilities <sup>1</sup>	Community Investment Funds		
	Clearing and grubbing/bonds/mob	1	ls	\$2,000	\$2,000	\$0	\$0	\$2,000
	8-inch pipe	7,650	ft	\$120	\$918,000	\$0	\$0	\$918,000
	2-inch blowoff	2	ea	\$2,000	\$4,000	\$0	\$0	\$4,000
	Air release assembly	2	ea	\$2,500	\$5,000	\$0	\$0	\$5,000
	8-inch valve	6	ea	\$2,000	\$12,000	\$0	\$0	\$12,000
	Fire hydrant	7	ea	\$6,000	\$42,000	\$0	\$42,000	\$0
	Main ending with blowoff	2	ls	\$2,000	\$4,000	\$0	\$0	\$4,000
	Stream Crossing	1	ls	\$20,000	\$20,000	\$0	\$0	\$20,000
	Single service assembly	24	ea	\$1,200	\$28,800	\$0	\$0	\$28,800
	Double service assembly	0	ea	\$2,000	\$0	\$0	\$0	\$0
	Roadway Restoration - Armstrong <sup>4</sup>	11,600	sf	\$2.40	\$27,840	\$0	\$0	\$27,840
	Roadway Restoration - Golden Oaks Double Chip seal <sup>5</sup>	140,000	SF	\$0.60	\$84,000	\$0	\$0	\$84,000
	Misc. - Roadway work per HOA Golden Oaks	1	ls	\$10,000	\$10,000	\$0	\$0	\$10,000
	Rock Removal	100	cy	\$200	\$20,000	\$0	\$0	\$20,000
	<i>Construction Subtotal</i>				\$1,177,640	\$0	\$42,000	\$1,135,640
	Contingency	15	%		\$176,646	\$0	\$6,300	\$170,346
<b>Construction Subtotal</b>					<b>\$1,354,286</b>	<b>\$0</b>	<b>\$48,300</b>	<b>\$1,305,986</b>

**TOTAL ESTIMATED PROJECT COST      \$1,515,876      \$0      \$55,210      \$1,460,666**

**Payment from TSLs      -26,249**

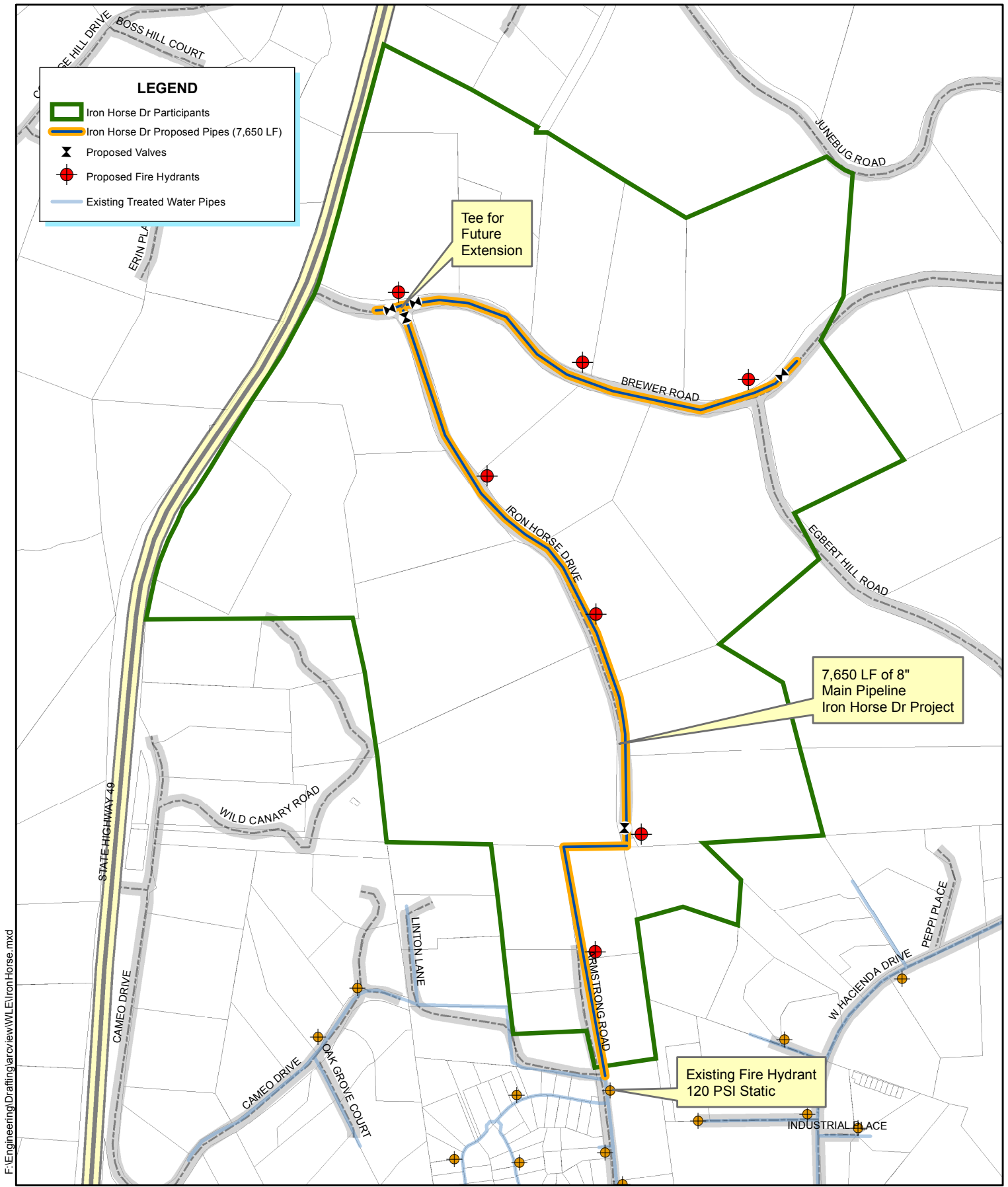
18 Parcels fronting mainline **Total      \$1,434,417**

3 Parcel by variance **LINEAR FEET PER PARCEL=      319**

3 Parcel by TSLs ( not included in the cost per parcel, costs removed from total) **CONSTRUCTION COST PER PARCEL =      \$68,306**

24 Total Parcels

- 1 Funding for Transmission & Storage Facilities from Capacity Fees.
- 2 There is a PUE on Brewer and not on Iron Horse, these funds are for the purchase of ROW on Iron Horse assumes purchase of 9
- 3 CEQA includes as a categorical exemption
- 4 Assume 2 inch overlay on Armstrong
- 5 Assumes Double Chip Seal per previous requirements on the Golden Oaks Homeowners Association
- 6 Miscellaneous repair on Brewer required by Golden Oaks Homeowners Association



F:\Engineering\Drafting\arcview\WLE\IronHorse.mxd

# IRON HORSE DRIVE WATERLINE EXTENSION



Date: 4/10/2018  
 Drawn By: D. HUNT

**NEVADA IRRIGATION DISTRICT**

NEVADA COUNTY -- PLACER COUNTY  
 GRASS VALLEY, CALIFORNIA

Scale: 1" = 700' @ 8-1/2x11

FIGURE: