

# Staff Report

for the Board of Directors' Meeting of April 8, 2020

**TO:** Board of Directors  
**FROM:** Chip Close, Water Operations Manager  
**DATE:** March 31, 2020  
**SUBJECT: Surplus Water Declaration (Consent)**

***OPERATIONS***

---

---

## **RECOMMENDATION:**

Receive an update on the Water and Hydroelectric Committee's declaration of surplus water availability for the 2020 irrigation season in accordance with District Policy #8200.

## **BACKGROUND:**

Prior to the start of irrigation season, the District reviews forecasted water availability for the coming summer months. The forecast includes current storage as well as anticipated runoff based on snow survey data. The data determines whether the District anticipates enough supply for full deliveries, or whether the drought contingency plan will be enacted. The data is also utilized to determine if surplus water supply is expected.

In years where a surplus exists, the District, per CA Water Code section 383, can sell the surplus supply to customers outside the District's boundary. Historically, the District has provided surplus water service to roughly 35 local outside District customers in an annual contract. In addition, the City of Grass Valley and the City of Nevada City are outside District customers supplied via long-term surplus water supply agreements. (Per Board direction in 2005, the District will no longer accept new outside District customers, but will honor these existing accounts.)

The current and forecasted water supply portfolio is as follows:

District reservoir storage as of March 31, 2020, is 212,289 AF, which is 95% of average for this time of year. The forecasted April – July runoff from the Department of Water Resources for the Yuba River basin currently sits at 60% of average, which correlates to approximately 78,700 AF in expected District watershed runoff. PG&E anticipates having water available to purchase per the Coordinated Operating Agreement, but does not have an estimated amount at this time. Given the lack of specific PG&E numbers, Staff has performed the water availability analysis without it.

The accumulation of the information above indicates that forecasted available water supply is equal to 291,000 AF. Based on these factors, the District is above the 235,700 AF threshold for normal operations as established in the Drought Contingency Plan, and has water that is surplus to the needs of customers within the District boundaries.

Water supply conditions have greatly improved since the March 18, 2020 WHO Committee surplus declaration thanks to a cold and wet March. The District is now projecting carryover at 177,800 AF as compared to the originally estimated 161,600 AF. This further bolsters the surplus declaration.

Overall precipitation totals for the 2019/2020 season will be below average, so Staff will commence with a voluntary conservation campaign through the 2020 irrigation season.

The declaration of surplus water is in line with District Strategic Plan Goal number three: “Developing and managing our resources in a self-determining manner protects and provides for local control of our community’s most valuable assets – a fairly priced and available water supply.”

**BUDGETARY IMPACT:**

A declaration of available surplus will provide an increase in water sales revenue. The fee for outside District customer sales includes a 25% increase to offset the lack of tax revenue contributions from out of District parcels. The estimated revenue in water sales from surplus customers for the 2020 season is depicted below:

|                        |                  |               |
|------------------------|------------------|---------------|
| 35 Customers Fixed Fee | (35 X \$675.12)  | = \$23,629.20 |
| 133 Miners Inches      | (133 X \$397.85) | = \$52,914.05 |
|                        | Total            | = \$76,543.25 |

City of Grass Valley Usage (Based on 2019 demand)  
Base Rate + Per Acre Feet (\$675.12 + (\$350.92 X 842.25 AF) = \$296,237.49

City of Nevada City Usage (Based on 2019 demand)  
Base Rate + Per Acre Feet (\$675.12 + (\$350.92 X 113.64 AF) = \$40,553.67

Grand Total of Estimated Surplus Water Sales = \$413,334.41

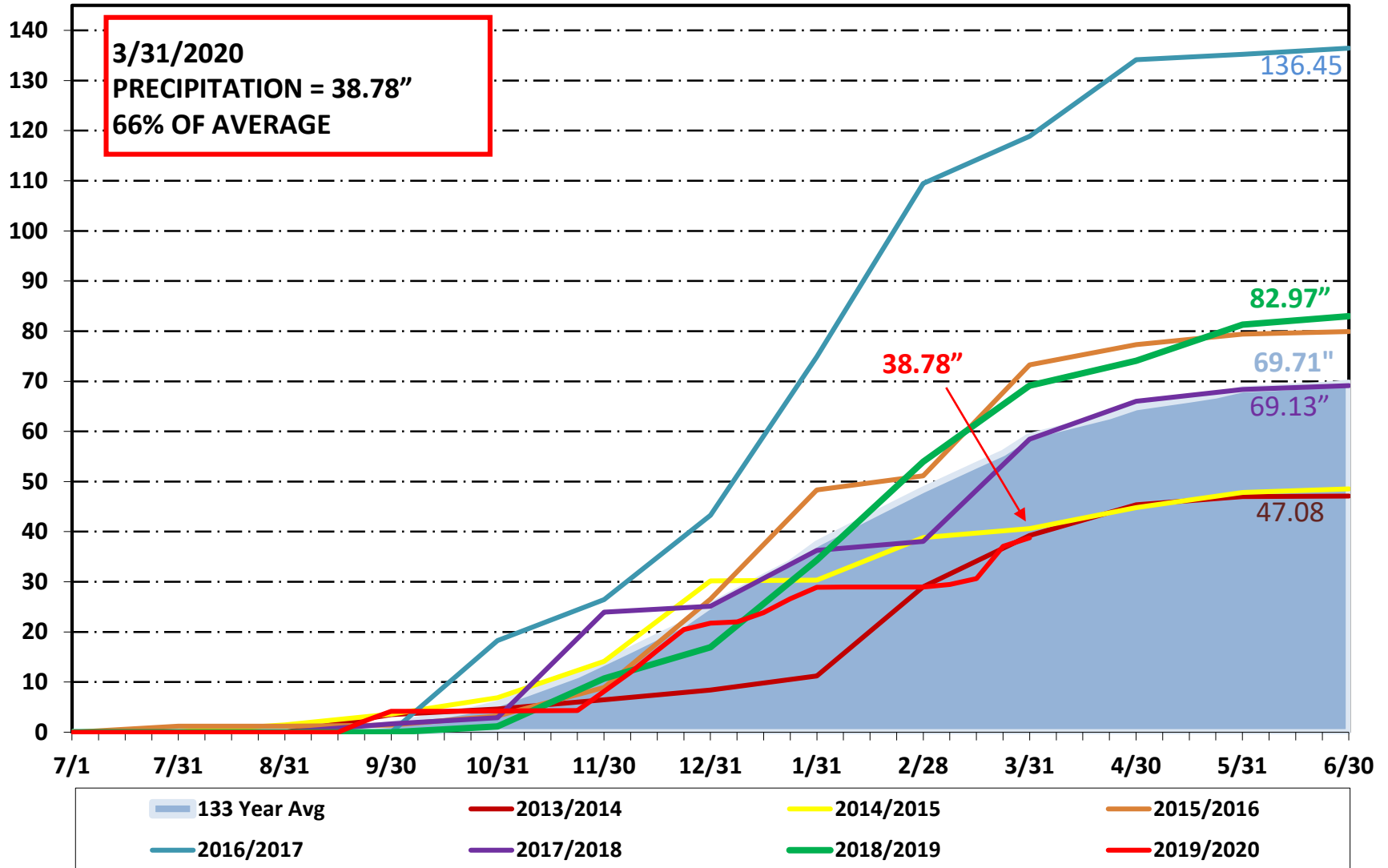
/ac

Attachment (2):

- Water Supply PowerPoint
- Drought Contingency Plan Water Availability Guidance Chart

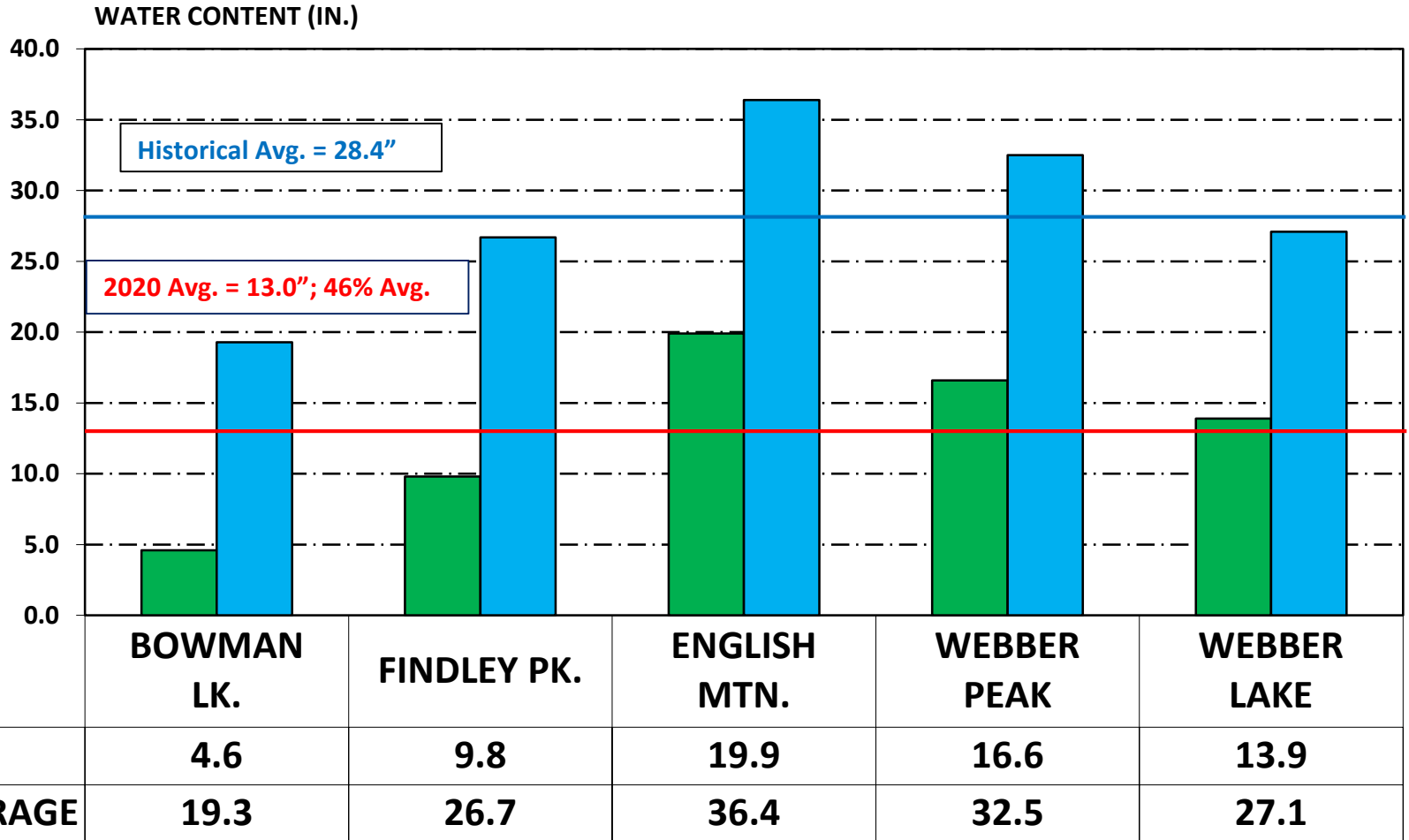
# BOWMAN LAKE PRECIPITATION

INCHES

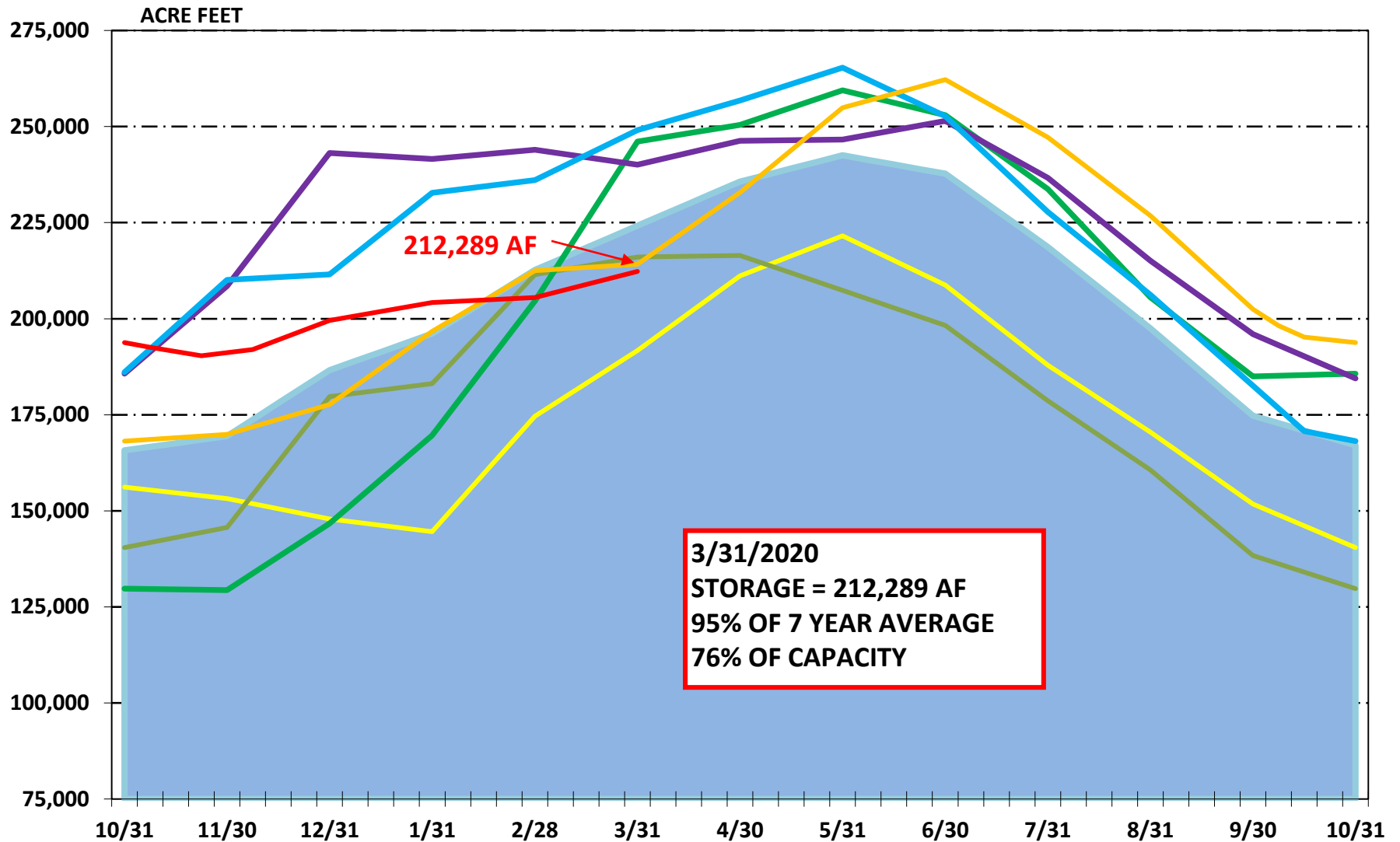


# NID SNOW SURVEY

## MARCH 1, 2020



# NID RESERVOIR STORAGE



7 Year Avg 2013/2014 2014/2015 2015/2016 2016/2017 2017/2018 2018/2019 2019/2020

# 2020 STORAGE FORECAST

