

Staff Report

for the Board of Directors Meeting of October 23, 2019

TO: Board of Directors

FROM: Remleh Scherzinger, P.E., MBA, General Manager
Kris Stepanian, MBA, Board Secretary

DATE: October 16, 2019

SUBJECT: Redistricting Project (FATR #2311)

ADMINISTRATION

RECOMMENDATION:

Review and discuss initial draft maps.

BACKGROUND:

The consultant, Redistricting Partners, is assisting the District in conducting an update to the by-district election system, in order to comply with the California Voting Rights Act (CVRA). At the regularly scheduled Board of Directors' meetings on September 11th and August 28th, the consultant provided presentations covering the process and time-line.

Initial draft map plans were provided by Redistricting Partners showing a variety of options. Maps are for visualization purposes only based on GIS files provided by the District in early 2019. They are subject to modification and one will eventually be presented to the Board of Directors for approval.

This item is in alignment with Goal No. 2 of the District's Strategic Plan, as it supports stewardship of District resources and requires a collaborative and responsive relationship with our Local and Regional community.

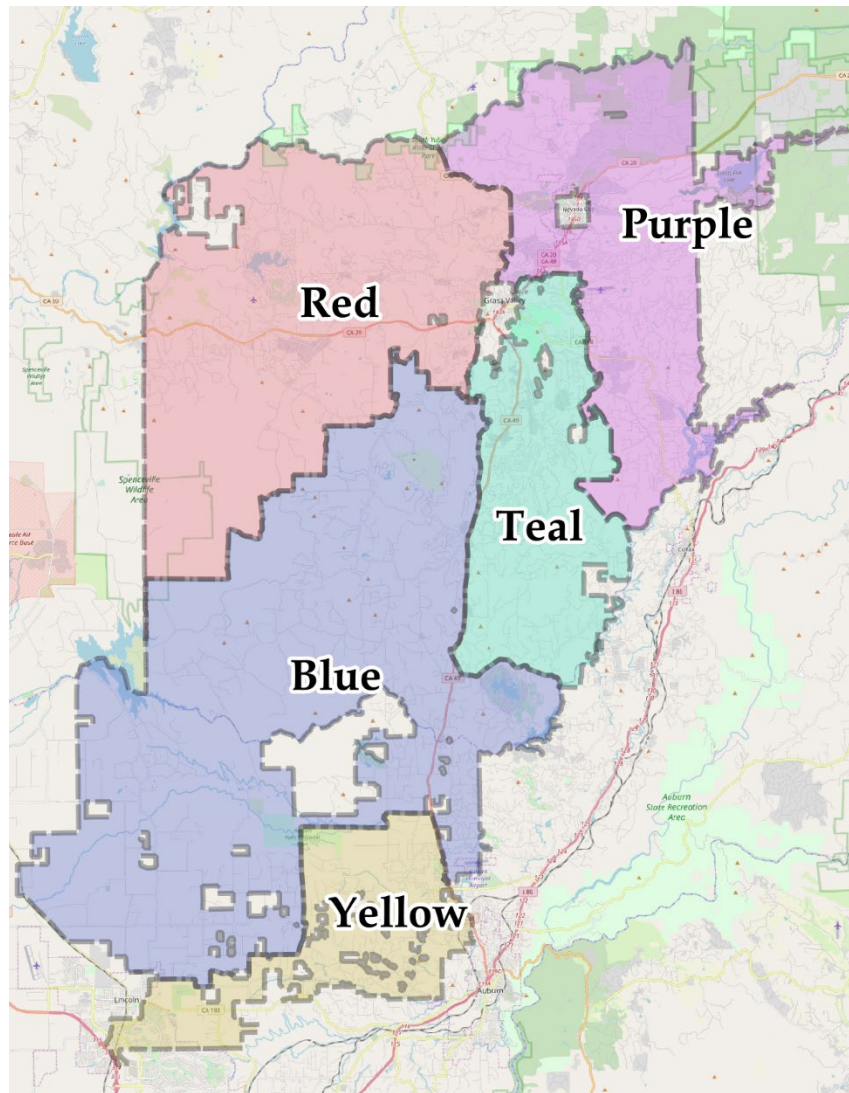
BUDGETARY IMPACT:

There is no budgetary impact at this time. Consulting fees were budgeted in the 2019 Budget (10115-52603).

Attachments:

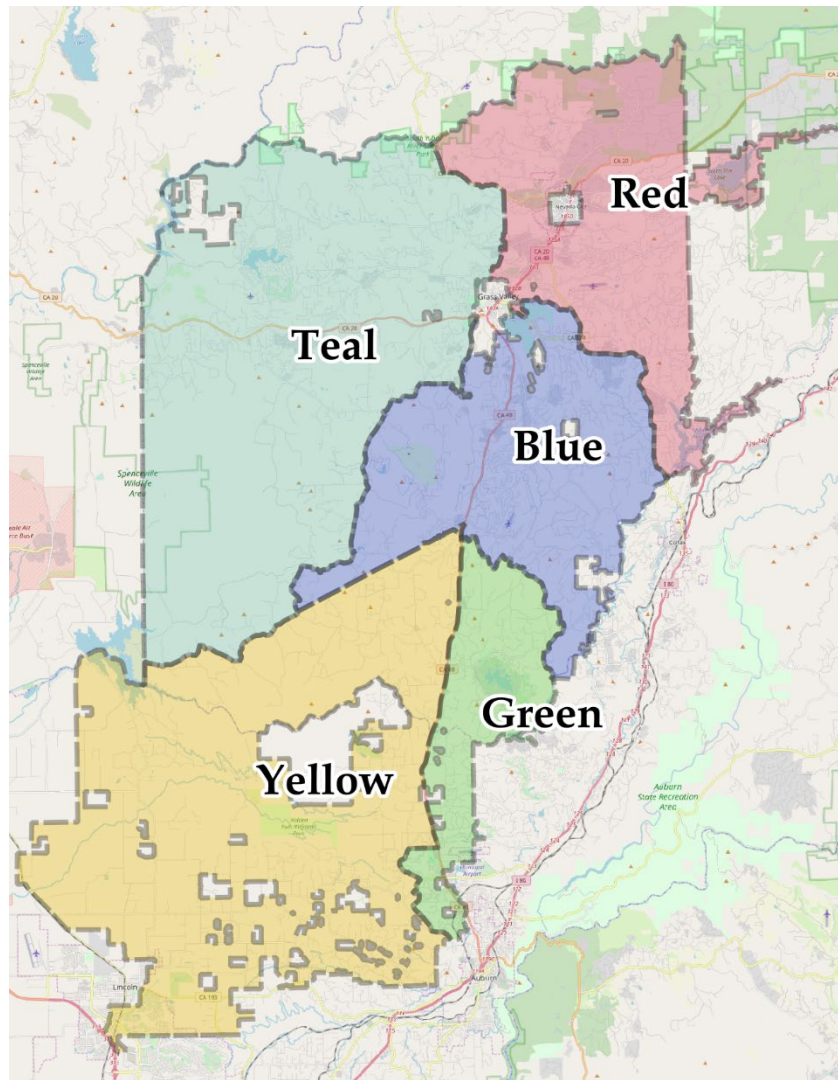
- Draft Map Plans
- Community of Interest Worksheet
- Time-line

Nevada Irrigation District – Plan 1



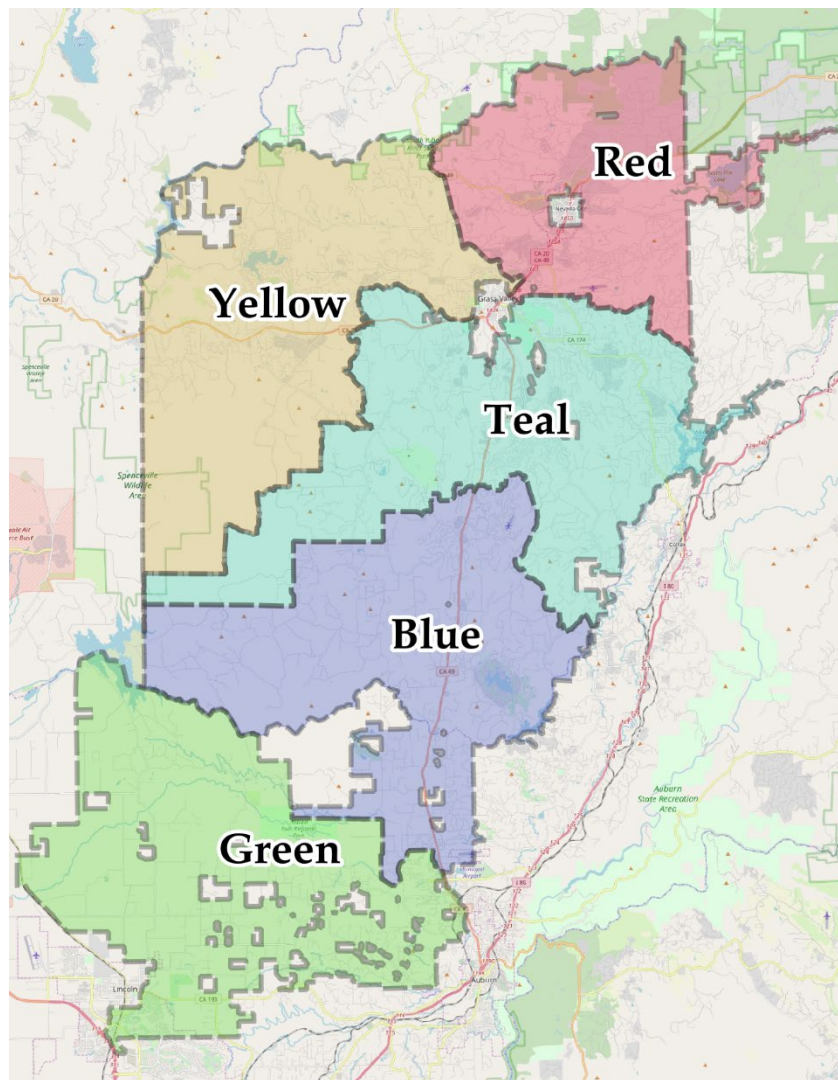
Total Population 2010 Census				Houses 2015 American Community Survey					
	Population	Deviation		Housing Units		Built 2010+			
Green	19,850	(661)	-3%	9,227	43				
Purple	20,624	113	1%	10,069	94				
Blue	20,884	373	2%	8,629	181				
Yellow	20,698	187	1%	9,485	164				
Red	20,503	(8)	0%	9,732	140				
ESTIMATED Population 2015 ACS									
	Estimated Population	White	Black	Asian	Hispanic Origin				
Green	19,395	18,292	94%	31	0%	282	1%	930	5%
Purple	21,054	19,561	93%	57	0%	239	1%	1,434	7%
Blue	21,668	19,729	91%	253	1%	589	3%	2,604	12%
Yellow	21,746	19,634	90%	180	1%	725	3%	2,844	13%
Red	21,115	19,030	90%	186	1%	276	1%	2,033	10%
ESTIMATED Citizen Voting Age Population 2015 ACS									
	CVAP	White CVAP	Black CVAP	Asian CVAP	Hispanic CVAP				
Green	15,819	14,756	93%	30	0%	185	1%	822	5%
Purple	17,614	16,206	92%	38	0%	218	1%	1,142	6%
Blue	16,544	14,165	86%	231	1%	442	3%	2,241	14%
Yellow	17,362	15,069	87%	147	1%	567	3%	2,215	13%
Red	16,676	14,462	87%	156	1%	136	1%	1,851	11%

Nevada Irrigation District – Plan 2



Total Population 2010 Census				Houses 2015 American Community Survey					
	Population	Deviation		Housing Units		Built 2010+			
Blue	19,866	(645)	-3%	9,223		47			
Red	21,255	744	4%	10,367		90			
Green	19,842	(669)	-3%	8,150		221			
Yellow	20,084	(427)	-2%	9,228		124			
Teal	21,512	1,001	5%	10,174		140			
ESTIMATED Population 2015 ACS									
	Estimated Population	White	Black	Asian	Hispanic Origin				
Blue	19,509	18,365	94%	43	0%	296	2%	871	4%
Red	21,650	20,092	93%	45	0%	238	1%	1,591	7%
Green	21,159	18,832	89%	227	1%	849	4%	3,296	16%
Yellow	20,439	18,865	92%	205	1%	446	2%	2,011	10%
Teal	22,221	20,092	90%	187	1%	282	1%	2,076	9%
ESTIMATED Citizen Voting Age Population 2015 ACS									
	CVAP	White CVAP	Black CVAP	Asian CVAP	Hispanic CVAP				
Blue	15,993	14,878	93%	25	0%	193	1%	800	5%
Red	17,966	16,470	92%	43	0%	220	1%	1,257	7%
Green	15,309	12,882	84%	216	1%	596	4%	2,509	16%
Yellow	17,217	15,171	88%	162	1%	399	2%	1,812	11%
Teal	17,530	15,257	87%	156	1%	140	1%	1,893	11%

Nevada Irrigation District – Plan 3



Total Population 2010 Census				Houses 2015 American Community Survey					
	Population	Deviation		Housing Units		Built 2010+			
Red	20,807	296	1%	9,772		145			
Teal	20,428	(83)	0%	9,591		56			
Blue	20,079	(432)	-2%	8,681		73			
Green	21,217	706	3%	9,491		217			
Yellow	20,028	(483)	-2%	9,607		131			
ESTIMATED Population 2015 ACS									
	Estimated Population	White		Black		Asian		Hispanic Origin	
Red	20,848	18,811	90%	153	1%	590	3%	1,983	10%
Teal	20,215	19,128	95%	52	0%	241	1%	891	4%
Blue	20,606	19,393	94%	147	1%	234	1%	2,209	11%
Green	22,355	20,131	90%	176	1%	717	3%	2,848	13%
Yellow	20,954	18,783	90%	179	1%	329	2%	1,914	9%
ESTIMATED Citizen Voting Age Population 2015 ACS									
	CVAP	White CVAP		Black CVAP		Asian CVAP		Hispanic CVAP	
Red	16,806	14,957	89%	141	1%	434	3%	1,596	9%
Teal	16,801	15,716	94%	33	0%	157	1%	840	5%
Blue	16,070	14,269	89%	148	1%	182	1%	1,856	12%
Green	17,831	15,506	87%	131	1%	574	3%	2,222	12%
Yellow	16,507	14,210	86%	149	1%	201	1%	1,757	11%

Community of Interest Worksheet

Your input is needed to shape the new districts for the Nevada Irrigation District, and one way you can be helpful is by assisting the board in developing a list of “communities of interest” or “COI” that can be utilized in districting.

What is a Community of Interest

A Community of Interest is any cohesive group of people that live in a geographically definable area and should be considered as a potential voting bloc in current or future elections.

There are some communities of interest that are considered “protected classes” in that they have rights through state or federal civil rights or voting rights laws. Some examples of protected classes in districting would be ethnic and racial minorities like a concentration of Latino, Asian or African Americans within a congressional district. Protected classes can be described through public input and there are federal databases that must be used wherever applicable to define these areas and make sure that they are not being harmed by the district boundaries.

There are other COI that can also be considered in districting, but don’t have the higher legal requirements as ethnic or racial minorities, but still are critical to the process. These could be clusters of senior citizens in one community, or a group of college students living in a densely populated area near a campus, or people who live in a downtown area or hillside, agricultural, urban, or even people who share concerns such as transportation, airport noise, dog parks, etc...

How to document your COI

1. What is the nature of the bond or common interest of your community? You can describe what the common interests of your community are, and why or how they are important.
2. Where is your community located? You can define it by drawing it on a map or describing it by natural or street/city/school board or other political boundaries.
3. What is the rationale for your community of interest to be used in this districting? You can describe how the community interacts with the agency being districted, and how the issues before the board have a unique impact on that community.

What you can do

- Attend one of the Nevada Irrigation District Board meetings!
- Email the information to: stepaniank@nidwater.com or complete the attached worksheet

Describe your Community of Interest (COI) below

Name (optional): _____

Date: _____

What is your Community of Interest?

Where is it located? Please be as specific as possible. Feel free to attach a map.

What is the mutual interest of the COI, particularly when it comes to the Nevada Irrigation District?

Nevada Irrigation District

What's Next

Board meetings open to the public will be held to obtain public input on communities of interest and receive feedback on potential districting plans prior to Board adoption.

Aug 28	1 st Board Meeting - Completed
Sept 11	2 nd Board Meeting - Completed
Sept 18	<i>Initial draft maps published - completed</i>
Oct 23	3rd Board Meeting - Draft Map Review
Oct 30	<i>Publish amended draft maps (if any)</i>
Nov 13	4th Board Meeting
Dec 4	<i>Publish final map for Board approval</i>
Dec 11	Adoption