

# Staff Report

for the Board of Directors' Meeting of March 8, 2017

**TO:** Board of Directors

**FROM:** Chip Close, Water Operations Manager

**DATE:** February 27, 2017

**SUBJECT:** Sustainable Groundwater Management Act Presentation

---

---

## *OPERATIONS*

### **RECOMMENDATION:**

Receive a presentation from Brett Story, Placer County Principal Management Analyst, regarding implementation of the Sustainable Groundwater Management Act (SGMA) in Placer County.

### **BACKGROUND:**

The District's service area overlaps a small portion of the North American Subbasin of the Sacramento Ground Water Basin. As a surface water agency, the District does not withdrawal any water from the basin and therefore has been exempt from SGMA regulations.

Although exempt, the District has a vested and increasing interest in SGMA due to the proximity of the District canals that provide irrigation to lands within the recognized basin

The County of Placer has taken a leadership role in compliance with SGMA regulations. Brett Story will be providing a presentation to inform the District on the actions and local agencies involved in the North American Subbasin of the Sacramento Ground Water Basin.

### **BUDGETARY IMPACT:**

None

/ac

Attachments (1):

- Presentation



WEST PLACER  
**GROUNDWATER**  
SUSTAINABILITY AGENCY

# **Sustainable Groundwater Management Act (SGMA)**

Implementation in West Placer County

# Sustainable Groundwater Management Act of 2014

- Enacted by state of California in 2015
- Framework for local groundwater basin management
- Bring together all stakeholders – agencies, groundwater users, public
- Groundwater Sustainability Agency must be formed by June 30, 2017
- Groundwater Sustainability Plan due by January 31, 2022
- Only applies to wells using more than two acre feet of water per year  
*average family of 4 uses less than one acre foot/year*



**Sustainability  
Goal**

**Sustainable  
Groundwater  
Management**

**Sustainable  
Yield**

# Managing Groundwater Sustainability

Managing with a goal to reduce/avoid:

- Lowering of groundwater levels
- Water quality degradation
- Seawater intrusion
- Depletions of surface water
- Land subsidence
- Reduction of groundwater storage

# What is a Groundwater Sustainability Agency (GSA)?

- One or more local agencies implementing the Sustainable Groundwater Management Act
- Any local public agency with water supply, water or land management authority
- Multiple agencies will need to coordinate to cover a groundwater basin

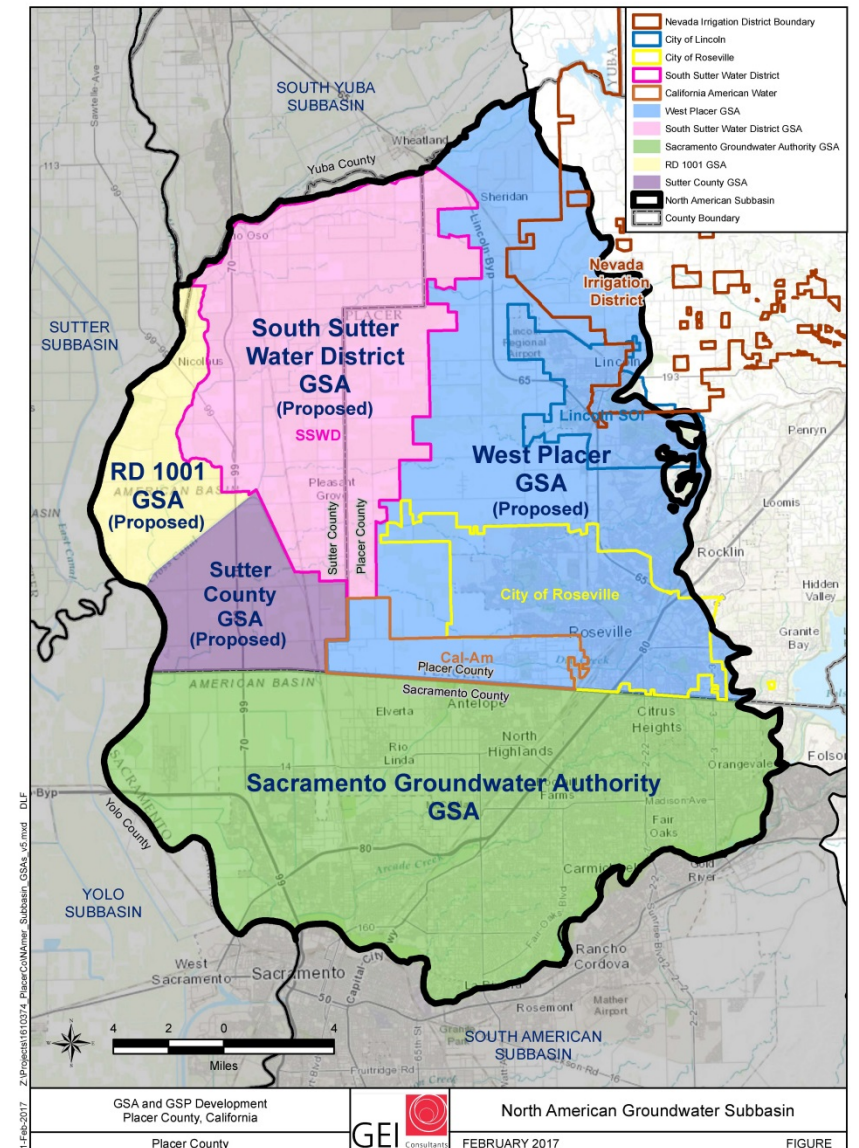


# North American Sub Basin

## What is a groundwater basin?

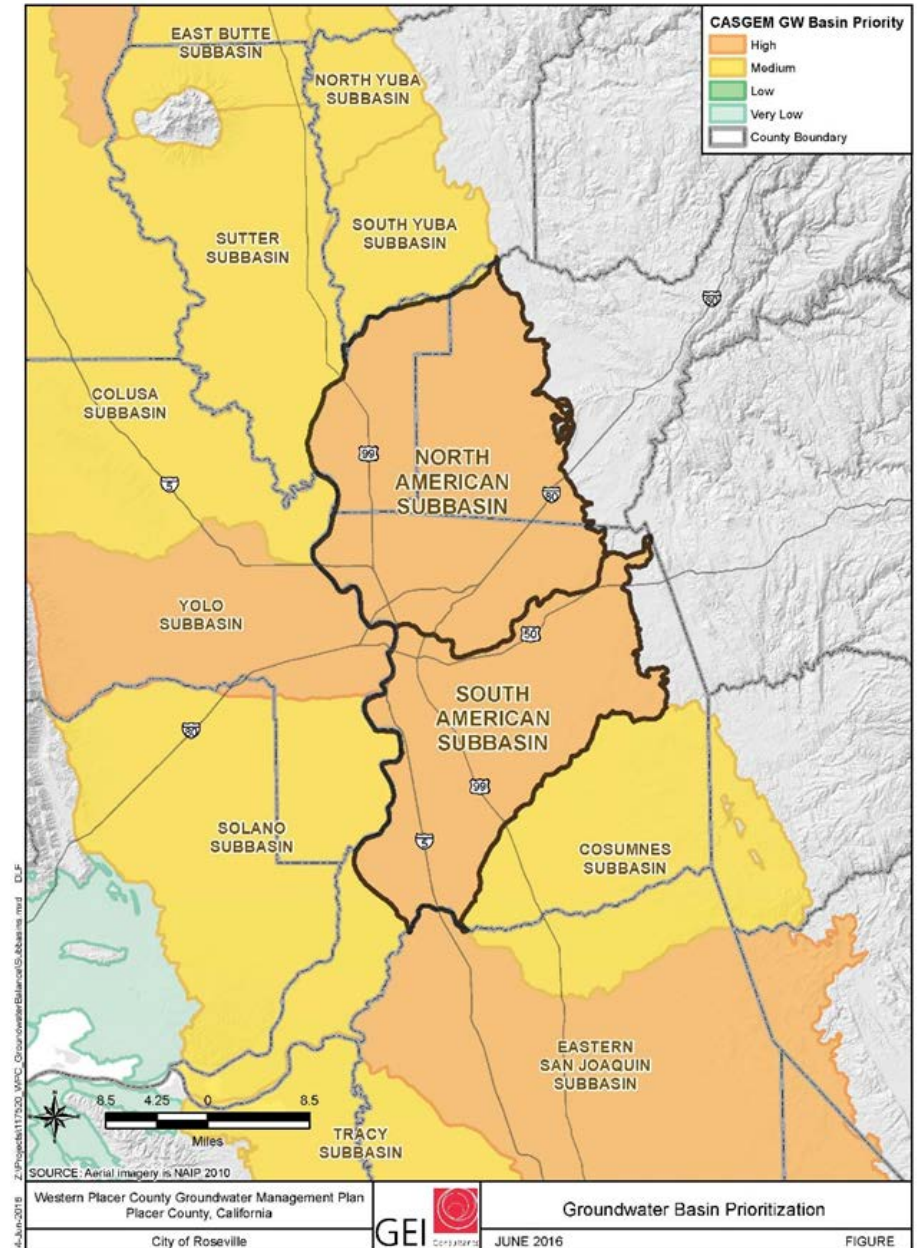
A defined area containing sediments that are capable of supplying or storing groundwater

## What are the boundaries of the North American Sub basin?



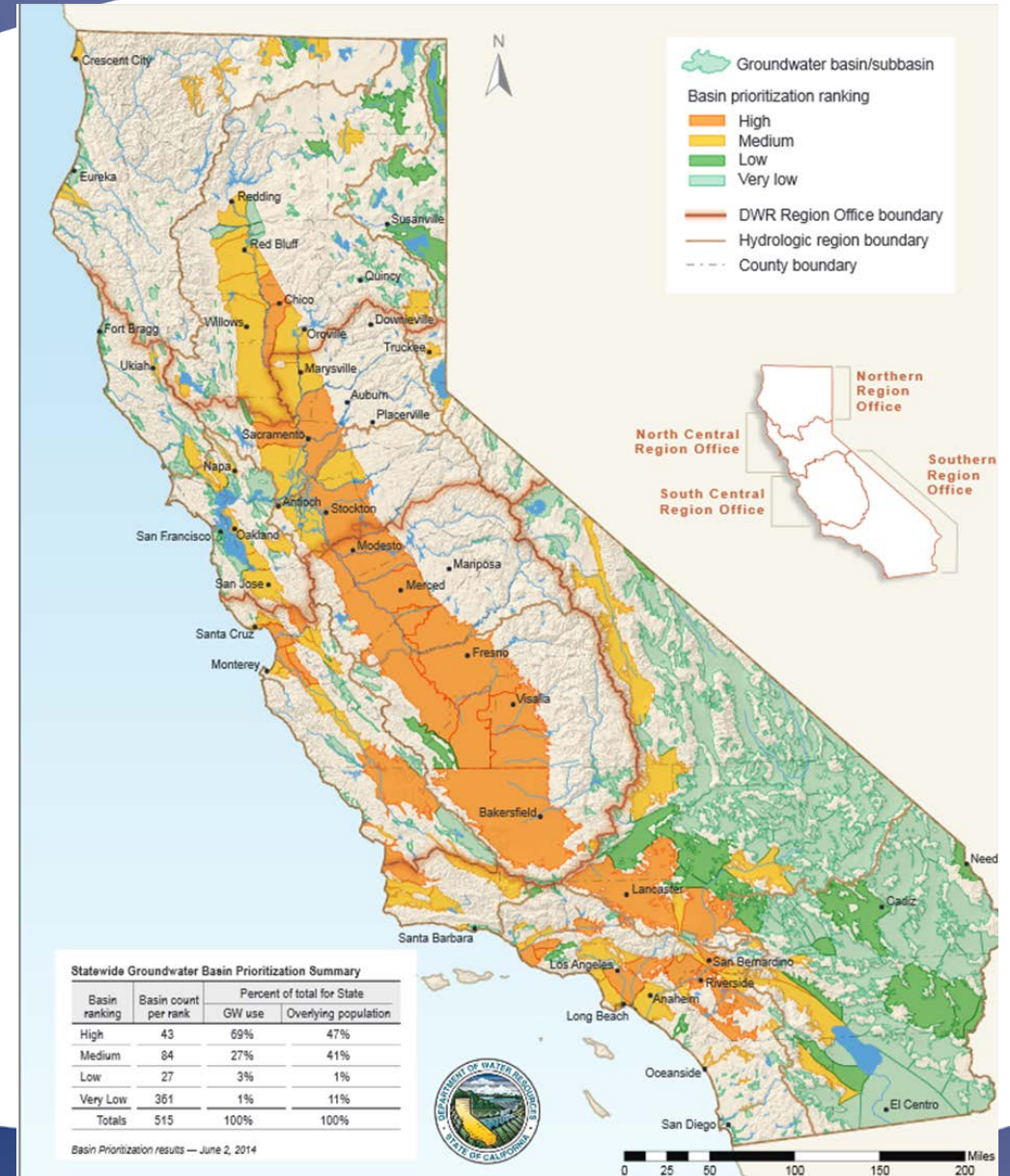


# What are the boundaries of the North American Basin?





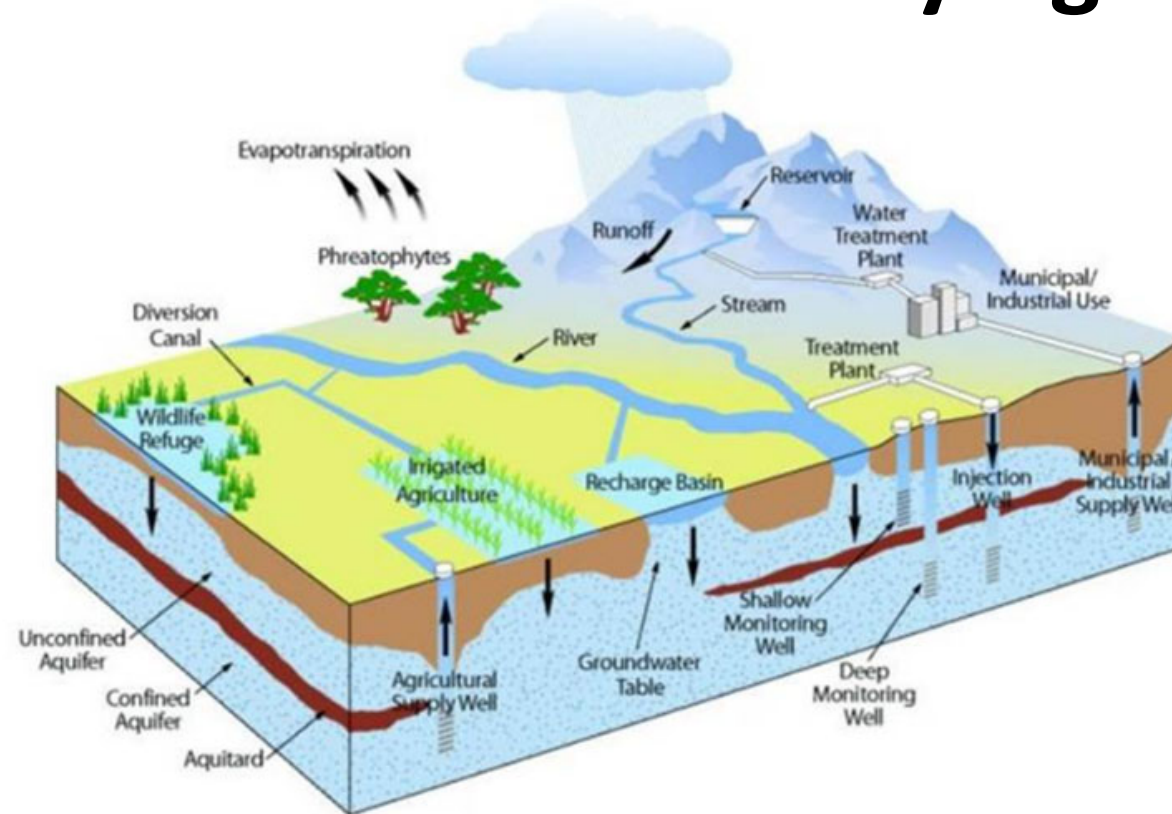
# California View





# Proposed West Placer Groundwater Sustainability Agency

- Covers portion of North American Sub Basin
- Forming Agencies:
  - City of Lincoln
  - City of Roseville
  - Placer County Water Agency (PCWA)
  - Placer County
  - Cal American Water (Cal Am)
  - Nevada Irrigation District (potentially)
- On track to be established by June 30, 2017



# Groundwater Sustainability Agency Requirements

- Carry out Groundwater Act
- Prepare, adopt and implement Sustainability Plan by 2022
- Conduct studies and monitor sustainability of the basin
- Engage all stakeholders
- Report annually to state and public





# Groundwater Sustainability Agency Options

Additional tools allowed by law, if necessary:

- Adopt rules, regulations, ordinances and resolutions
- Conduct groundwater studies/investigations
- Register and monitor wells
- Require reports of groundwater extraction
- Implement capital projects to meet goals
- Assess fees to cover plan implementation

# Groundwater Sustainability Plan (GSP)

- Public outreach necessary
- State Department of Water Resources (DWR) must approve plan
- Annual reporting, every five-years must evaluate plan
- Currently working toward one basin plan
  - More than one basin plan requires coordination & agreements
  - Multiple plans add cost and complexity
- Plan due January 31, 2022



# Who Uses Groundwater in West Placer?

- Over 90 percent of groundwater use is by agriculture
- Less than 10 percent is for municipal/domestic use
- Groundwater use varies – more in drought, less in wet years



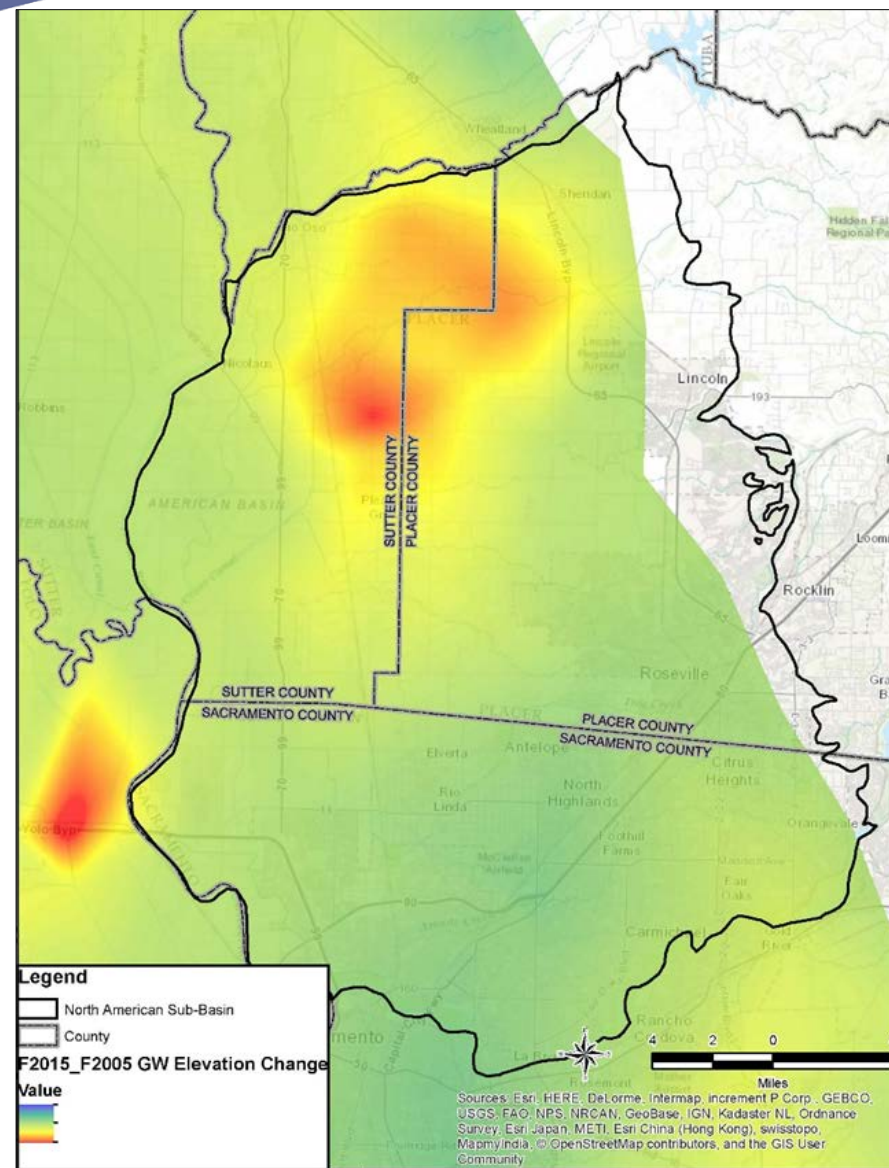
# West Placer Groundwater Levels

- Groundwater levels measured by:
  - City of Lincoln, City of Roseville, PCWA, Placer County and DWR in 67 wells
- Department of Water Resources measurements go back to 1940s
- Local agencies measuring since 2004



# Groundwater Level Changes 2005 to 2015

- Green: groundwater levels increased or decreased less than 10 feet
- Yellow: decline by 10 to 20 feet
- Red: decline by more than 20 feet





# North American Sub Basin: West Placer Groundwater Conditions

- Groundwater levels are generally stable
- Concerns in northern and western areas being evaluated
- Water quality is generally good
- Subsidence is not a concern as long as levels remain stable
- Local recharge areas near creeks are being studied



# Stakeholder Involvement

- Stakeholder: anyone who is interested
- Can provide input into decisions, how the act will affect you, what is important to you
- Groundwater Management Act requires a list of interested parties be maintained and engaged
- Need to engage stakeholders before forming Groundwater Sustainability Agency and developing Groundwater Sustainability Plan

# Initial Stakeholder Assessment

- Conducted May - July 2016
- Multiple interviews
- Farmers, ranchers, residential pumpers, Agriculture Commissioner and related Placer, Sutter and Sacramento agencies



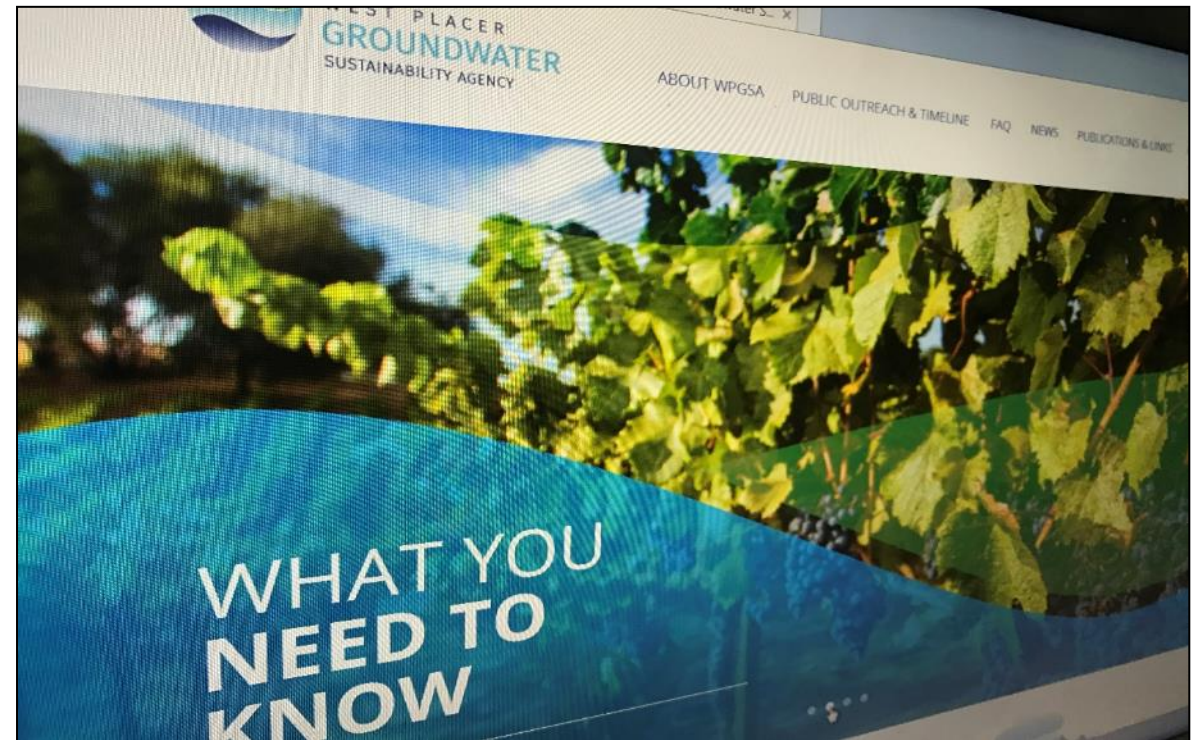


## What People Want to Know

- Why was Sustainable Groundwater Act established ?
- What is the process ?
- Is process fully vetted with stakeholder participation ?
- How to get involved ?
- Do local agencies support their agriculture communities ?
- Water, property rights affected ?
- Individual groundwater pumper requirements ?

# How to Stay Involved and Informed

- Visit project website:  
➤ [westplacergroundwater.com](https://westplacergroundwater.com)
- Subscribe to email list
- Provide written comments
- Attend future stakeholder workshops



# Timeline to Meet State Requirements

- Memorandum of Agreement between parties:
  - Drafted and being reviewed; February, 2017                      **Final: March 30, 2017**
- Agencies bring for approval: Month of April, 2017
  - Resolution of creation of GSA, Map & Boundaries (GIS shape files), MOA
- Within 30 days of last agency adopting; File package : May, 2017
  - Resolution of creation of GSA, Map & Boundaries (GIS shape files), MOA
  - Public outreach documentation
  - Letters of support

***West Placer  
Welcomes NID to join us***



WEST PLACER  
**GROUNDWATER**  
SUSTAINABILITY AGENCY

# Questions?



# Back Up Technical Slides

# Summary of Groundwater Levels

- Most wells show levels within historic range
- North Lincoln levels showing decline
- Most levels recovered in 2016 after 2010-2015 drought





## Subsidence: Land Settling

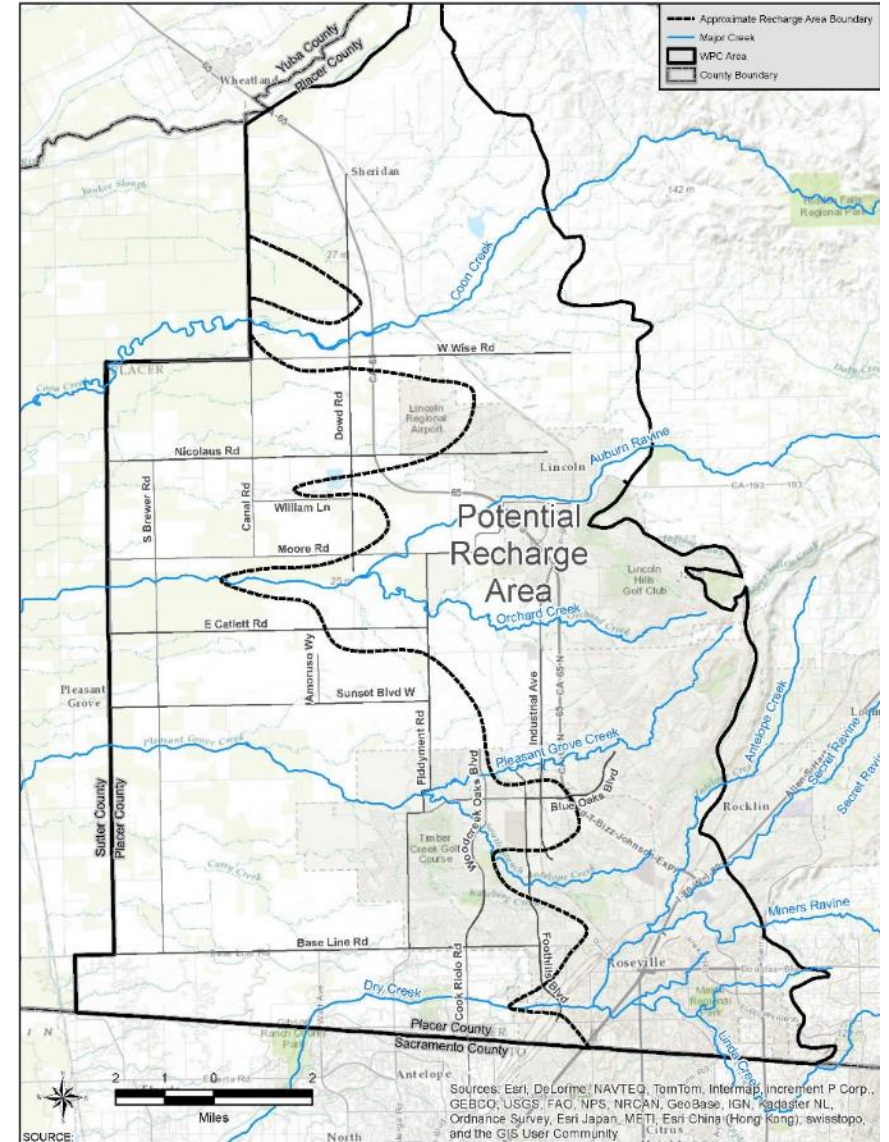
- Mid-century to 1991: up to 2.5 feet subsidence
- Recent: little to no subsidence
- Area has low potential for subsidence due to generally stable groundwater levels





# Surface Water/Groundwater Interaction in West Placer

- Interconnected - more so in the eastern portion of the basin
- Still under evaluation





# Groundwater Quality

- Mostly good quality
- Localized poorer quality in Northeast due to marine sediments
- Four contamination sites under remediation

