

Staff Report

TO: Board of Directors

FROM: Jennifer Hanson, General Manager
Kris Stepanian, Board Secretary

DATE: January 26, 2022

SUBJECT: Redistricting Update

ADMINISTRATION

RECOMMENDATION:

Receive a presentation from Redistricting Partners and discuss preliminary draft maps and timeline.

BACKGROUND:

Redistricting is the process of adjusting district lines approximately every 10 years after the release of the US Census. Redistricting Partners is assisting the District in conducting a redistricting update in order to comply with the California Voting Rights Act. Traditional redistricting principles will be used in this update and will help to ensure that the District divisions are:

- Relatively equal in size – people, not citizens
- Contiguous – district should not hop/jump
- Maintain “communities of interest”
- Follow city/county/local government lines
- Keep compact – in appearance/function

NID’s previous effort at redistricting was stalled during the Board meeting on October 23, 2019. In 2020, the then-anticipated Census results were delayed due to the COVID-19 pandemic. The District has since re-engaged in the redistricting process, and outlined below is an estimated timeline for completion:

- January 26, 2022 – Draft Maps Presentation
- February 2022 (TBD) – Draft Maps Revision(s)
- March 2022 (TBD) – Final Board Vote on District Maps

BUDGETARY IMPACTS:

None - This item is budgeted in the approved 2022 Budget under Management – Consulting Fees (10115-52603).

Attachments: (1)

- PowerPoint Presentation from Redistricting Partners



NID

Nevada Irrigation District

Redistricting 2021-2022

What is Redistricting

definition

Redistricting is the process of adjusting district lines every 10 years after the release of the US Census. The well known examples are Congress and the legislature.

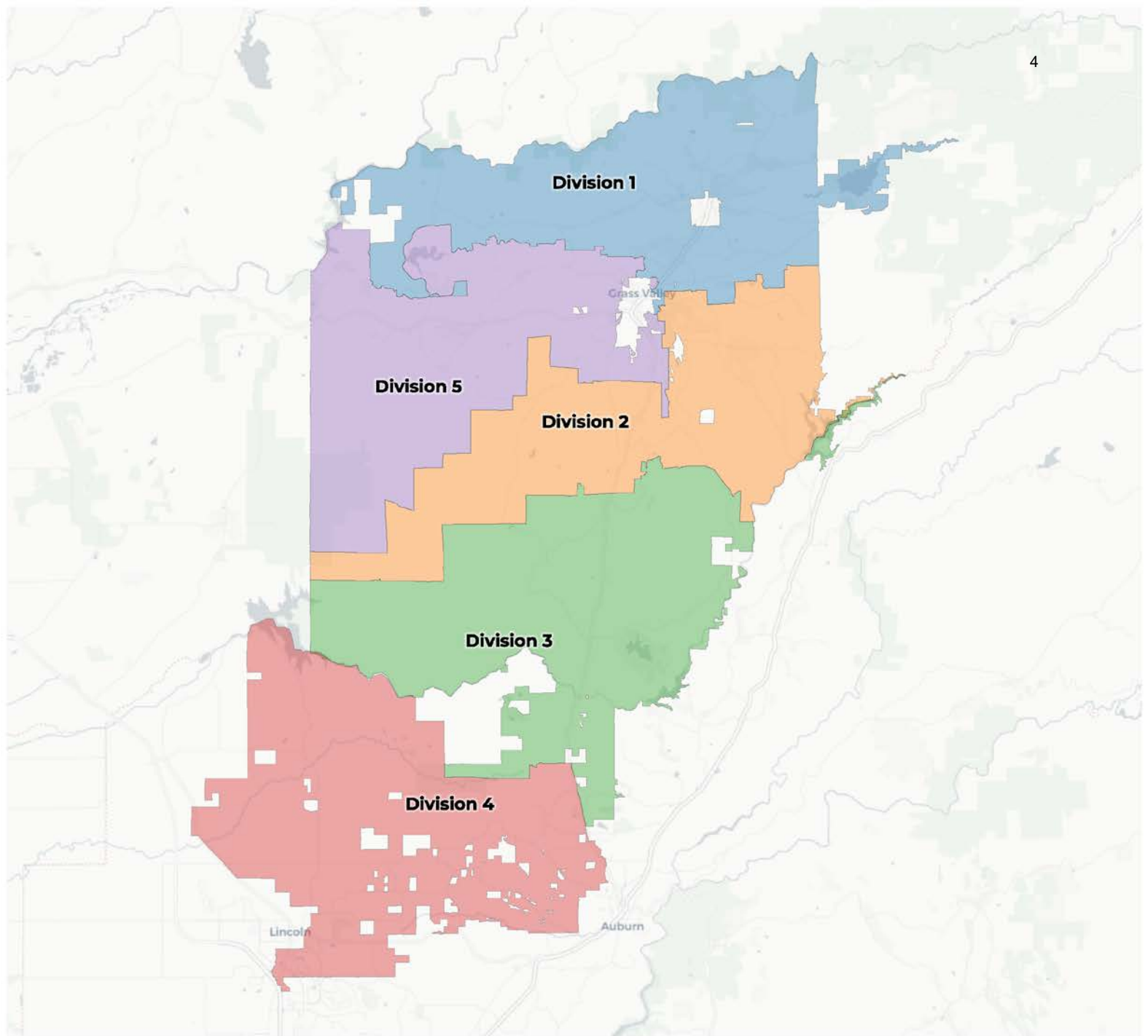
Within the US, redistricting has become an extremely politicized process and been the subject of more high-profile Supreme Court decisions than any other part of our elections system.

Traditional Redistricting Principles

Preventing a Districting from becoming a Gerrymander

There are a number of criteria that have been used nationally and upheld by courts.

- Relatively equal size - people, not citizens
- Contiguous – districts should not hop/jump
- Maintain “*communities of interest*”
- Follow city/county/local government lines
- Keep districts compact – appearance/function



2020 Census

	Division 1	Division 2	Division 3	Division 4	Division 5
Population	20,643	17,734	17,860	24,209	18,539
Deviation	846	-2,063	-1,937	4,412	-1,258
Deviation %	4.3%	-10.4%	-9.8%	22.3%	-6.4%
Other	18,522	16,033	16,019	19,517	16,618
Other %	89.7%	90.4%	89.7%	80.6%	89.6%
Latino	1,782	1,420	1,497	3,669	1,620
Latino %	8.6%	8.0%	8.4%	15.2%	8.7%
Asian	253	212	260	777	233
Asian %	1.2%	1.2%	1.5%	3.2%	1.3%
Black	86	69	84	246	68
Black %	0.4%	0.4%	0.5%	1.0%	0.4%

Citizen Voting Age Population (CVAP)

	Division 1	Division 2	Division 3	Division 4	Division 5
Total CVAP	15,884	14,939	14,483	19,535	14,699
Other CVAP	14,757	14,194	13,221	16,846	13,532
Other CVAP %	92.9%	95.0%	91.3%	86.2%	92.1%
Latino CVAP	980	622	986	1,519	828
Latino CVAP %	6.2%	4.2%	6.8%	7.8%	5.6%
Asian CVAP	48	77	164	935	142
Asian CVAP %	0.3%	0.5%	1.1%	4.8%	1.0%
Black CVAP	99	46	112	234	197
Black CVAP %	0.6%	0.3%	0.8%	1.2%	1.3%

2020 Census

	Division 1	Division 2	Division 3	Division 4	Division 5
Population	20,643	17,734	17,860	24,209	18,539
Deviation	846	-2,063	-1,937	4,412	-1,258
Deviation %	4.3%	-10.4%	-9.8%	22.3%	-6.4%
Other	18,522	16,033	16,019	19,517	16,618
Other %	89.7%	89.9%	89.7%	80.6%	89.6%
Latino					1,620
Latino %					8.7%
Asian	253	212	260	777	233
Asian %	1.2%	1.2%	1.5%	3.2%	1.3%
Black	86	69	84	246	68
Black %	0.4%	0.4%	0.5%	1.0%	0.4%

Deviation is 32.7%

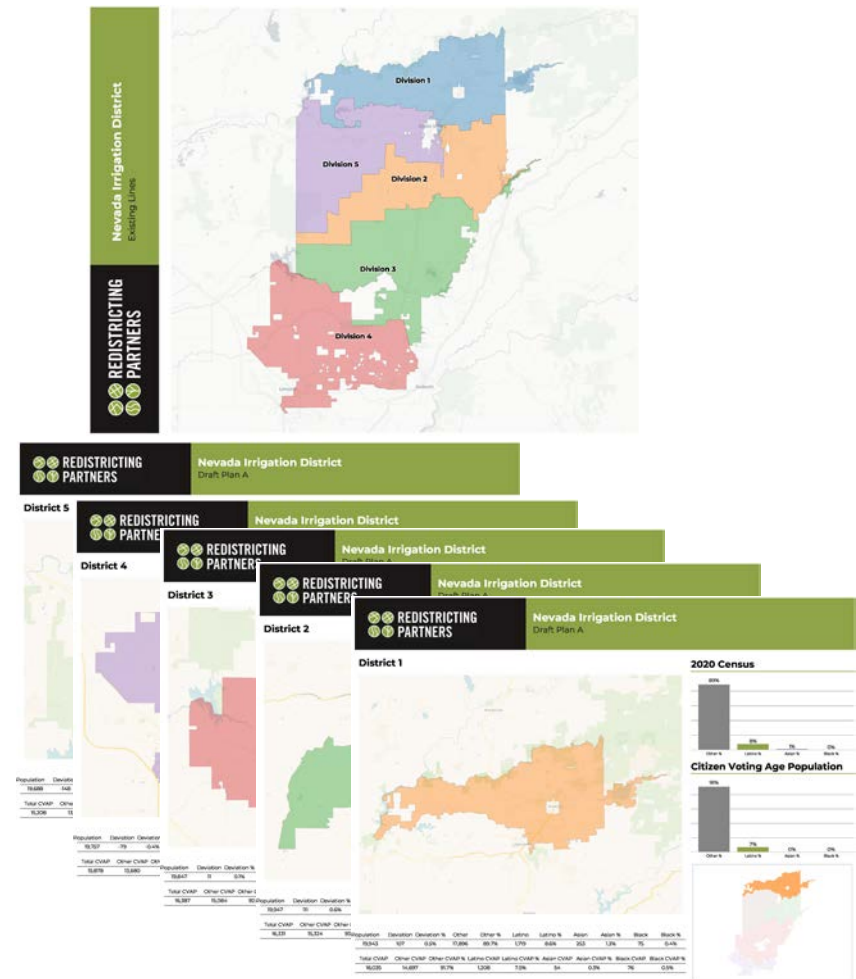
Citizen Voting Age Population (CVAP)

	Division 1	Division 2	Division 3	Division 4	Division 5
Total CVAP	15,884	14,939	14,483	19,535	14,699
Other CVAP	14,757	14,194	13,221	16,846	13,532
Other CVAP %	92.9%	95.0%	91.3%	86.2%	92.1%
Latino CVAP	980	622	986	1,519	828
Latino CVAP %	6.2%	4.2%	6.8%	7.8%	5.6%
Asian CVAP	48	77	164	935	142
Asian CVAP %	0.3%	0.5%	1.1%	4.8%	1.0%
Black CVAP	99	46	112	234	197
Black CVAP %	0.6%	0.3%	0.8%	1.2%	1.3%

Draft Map Plans

Each draft plan is provided with both a PDF and Online Web-based format

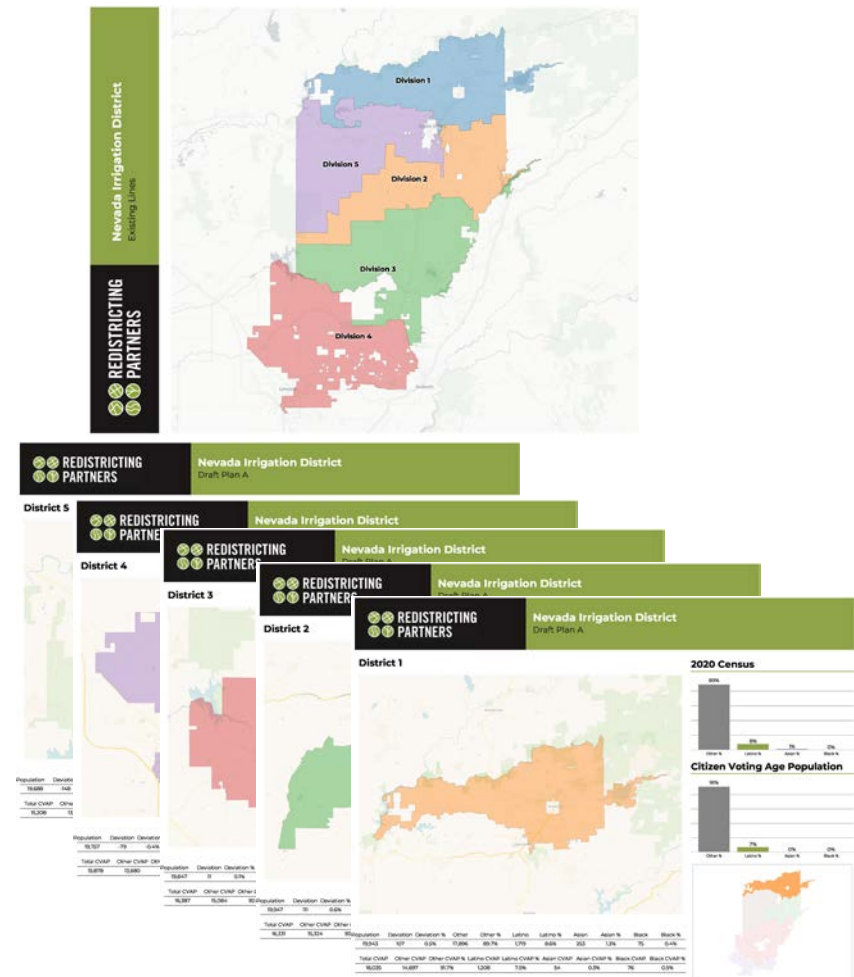
- Draft Map A– Minimal change
- Draft Map B – Unifying cities
- Draft Map C – Revision of A

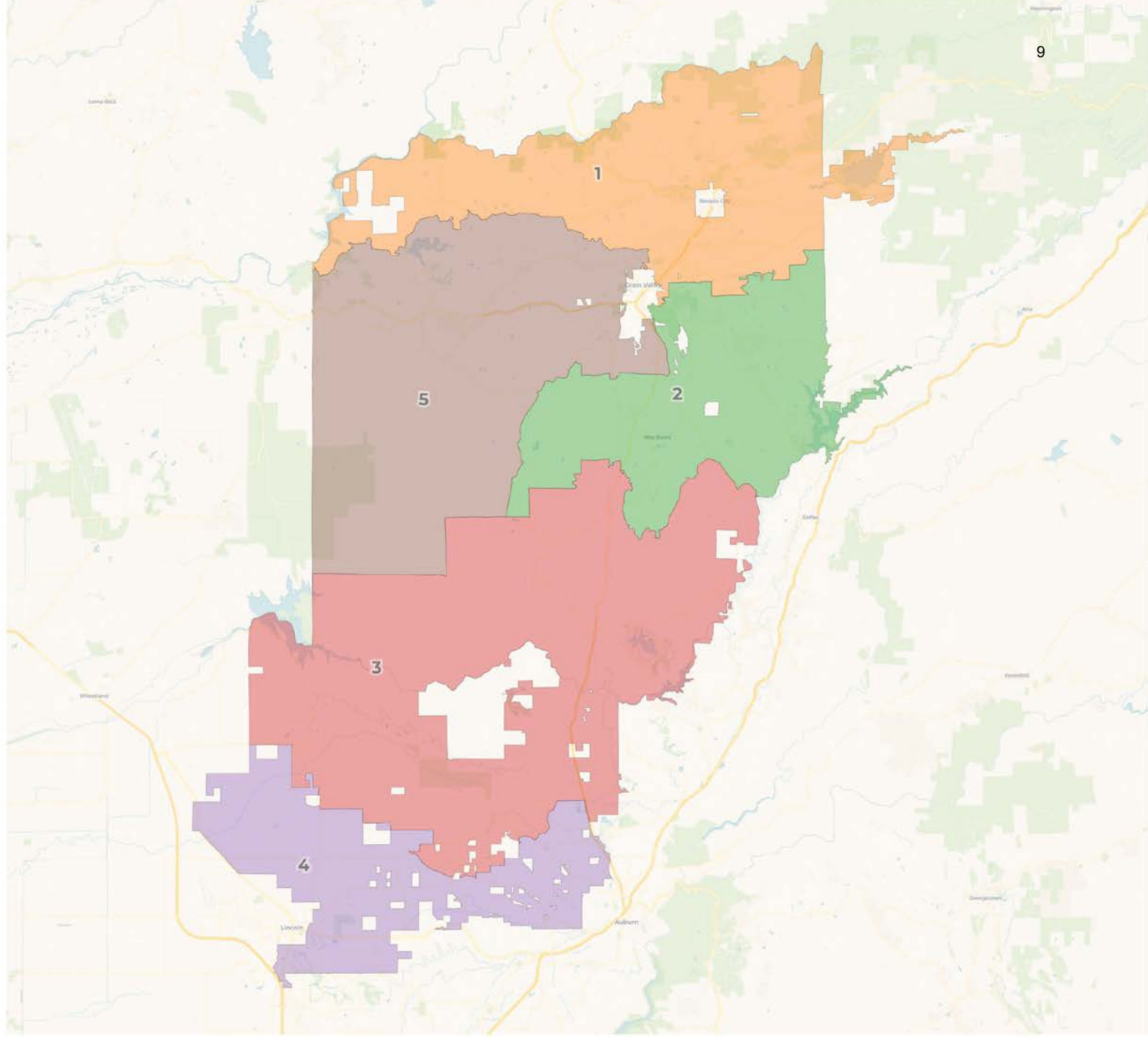


Draft Map Plans

Each draft plan is provided with both a PDF and Online Web-based format

- **Draft Map A– Minimal change**
- **Draft Map B – Unifying cities**
- **Draft Map C – Revision of A**





2020 Census

	1	2	3	4	5
Population	19,943	19,947	19,847	19,757	19,688
Deviation	107	111	11	-79	-148
Deviation %	0.5%	0.6%	0.1%	-0.4%	-0.7%
Other	17,896	18,075	17,622	15,641	17,639
Other %	89.7%	90.6%	88.8%	79.2%	89.6%
Latino	1,719	1,566	1,830	3,178	1,721
Latino %	8.6%	7.9%	9.2%	16.1%	8.7%
Asian	253	239	302	699	242
Asian %	1.3%	1.2%	1.5%	3.5%	1.2%
Black	75	67	93	239	86
Black %	0.4%	0.3%	0.5%	1.2%	0.4%

Citizen Voting Age Population (CVAP)

	1	2	3	4	5
Total CVAP	16,035	16,331	16,387	15,878	15,208
Other CVAP	14,697	15,324	15,084	13,680	13,922
Other CVAP %	91.7%	93.8%	92.0%	86.2%	91.5%
Latino CVAP	1,208	844	1,146	1,151	1,029
Latino CVAP %	7.5%	5.2%	7.0%	7.2%	6.8%
Asian CVAP	54	99	111	761	135
Asian CVAP %	0.3%	0.6%	0.7%	4.8%	0.9%
Black CVAP	76	64	46	286	122
Black CVAP %	0.5%	0.4%	0.3%	1.8%	0.8%

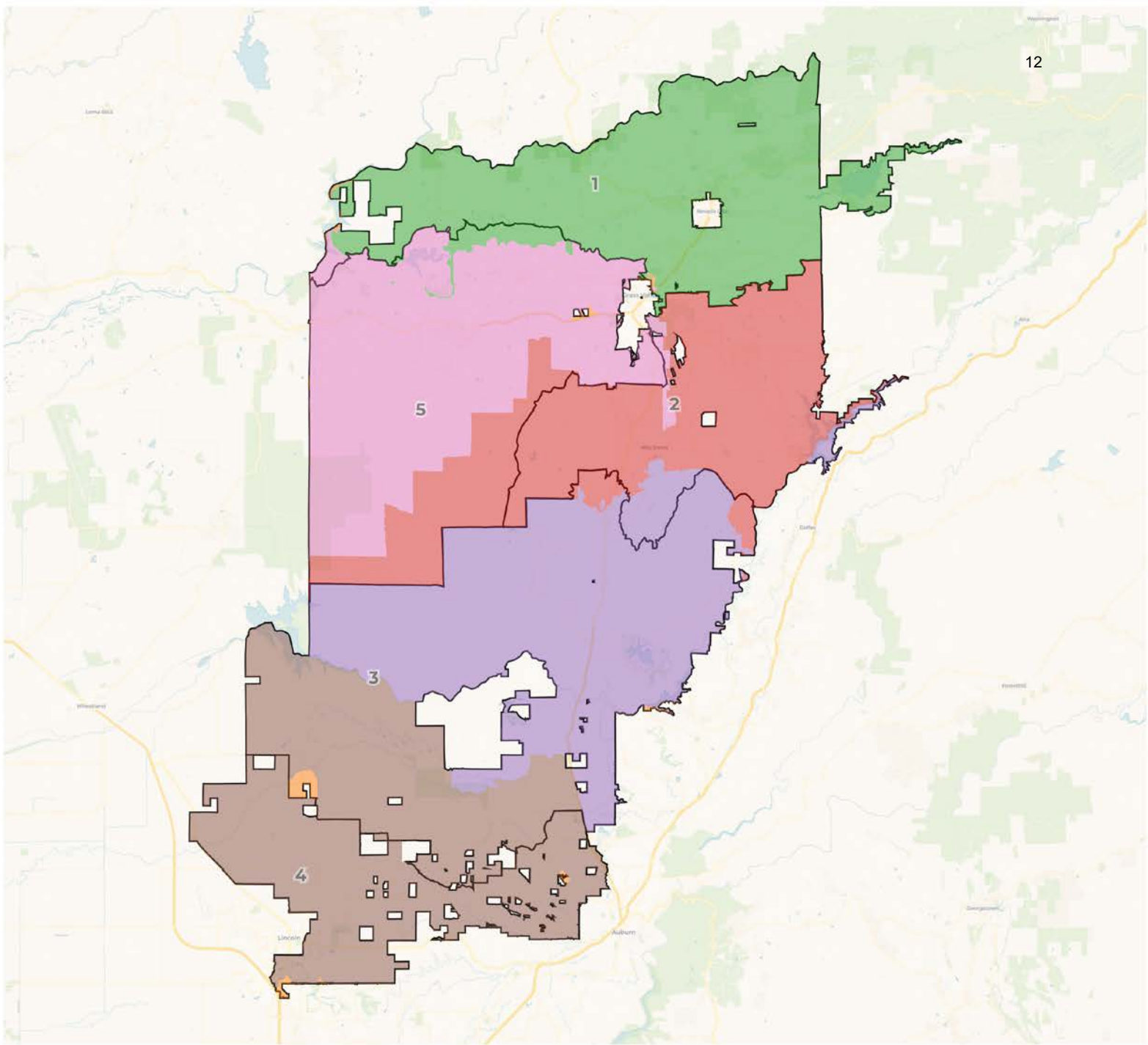
2020 Census

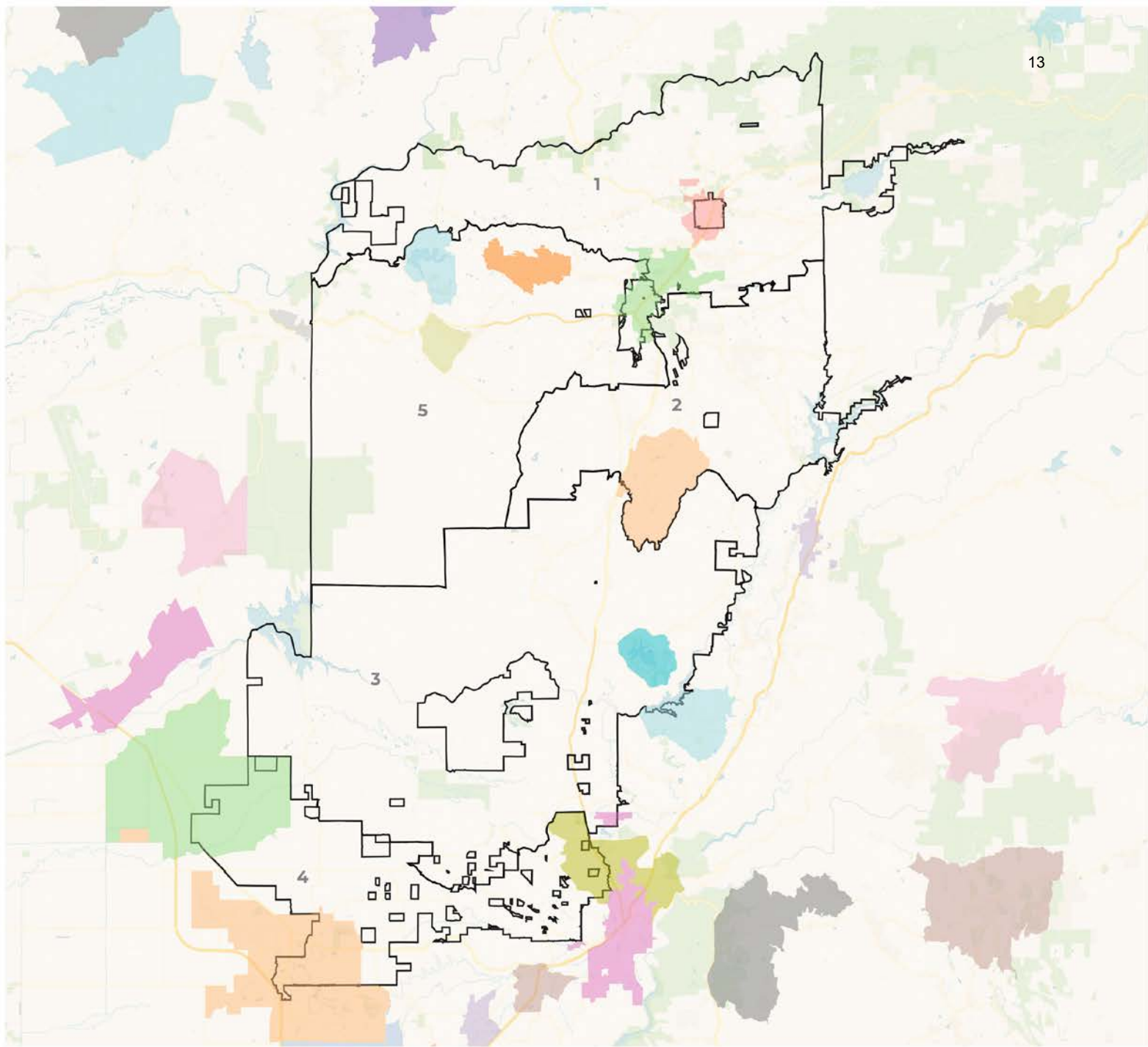
	1	2	3	4	5
Population	19,943	19,947	19,847	19,757	19,688
Deviation	107	111	11	-79	-148
Deviation %	0.5%	0.6%	0.1%	-0.4%	-0.7%
Other	17,896	18,075	17,622	15,641	17,639
Other %	89.7%	90.6%	88.8%	79.2%	89.6%
Latino					1,721
Latino %					8.7%
Asian	253	239	302	699	242
Asian %	1.3%	1.2%	1.5%	3.5%	1.2%
Black	75	67	93	239	86
Black %	0.4%	0.3%	0.5%	1.2%	0.4%

Deviation is 1.3%

Citizen Voting Age Population (CVAP)

	1	2	3	4	5
Total CVAP	16,035	16,331	16,387	15,878	15,208
Other CVAP	14,697	15,324	15,084	13,680	13,922
Other CVAP %	91.7%	93.8%	92.0%	86.2%	91.5%
Latino CVAP	1,208	844	1,146	1,151	1,029
Latino CVAP %	7.5%	5.2%	7.0%	7.2%	6.8%
Asian CVAP	54	99	111	761	135
Asian CVAP %	0.3%	0.6%	0.7%	4.8%	0.9%
Black CVAP	76	64	46	286	122
Black CVAP %	0.5%	0.4%	0.3%	1.8%	0.8%

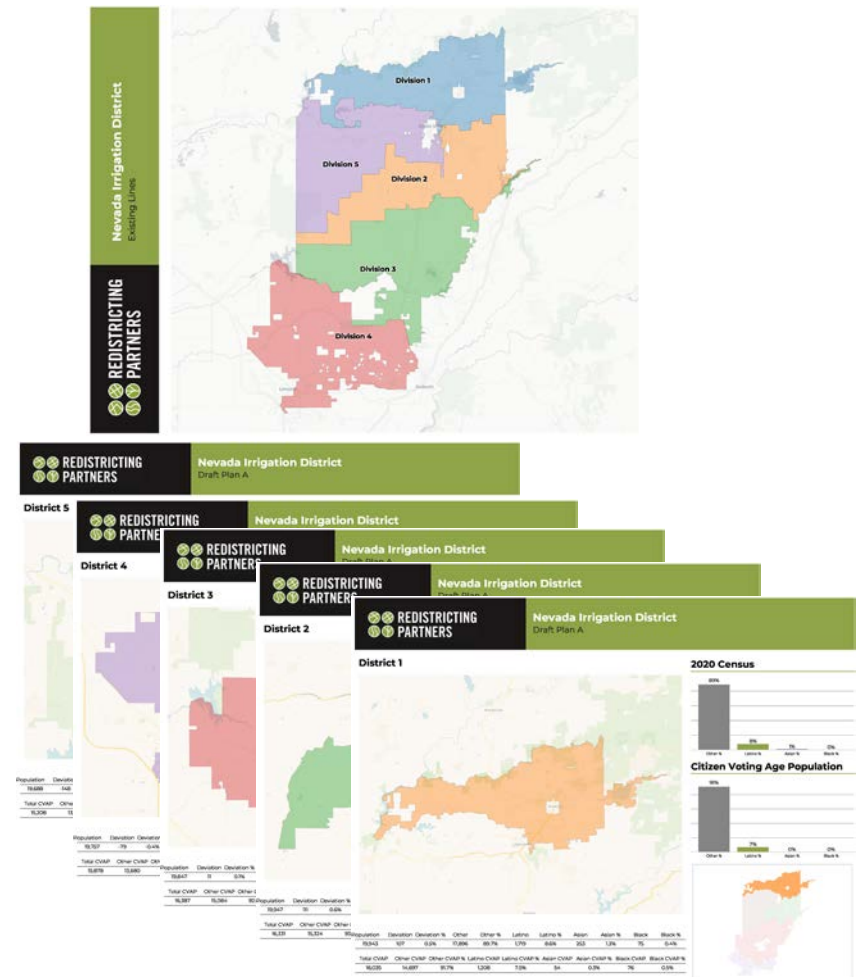


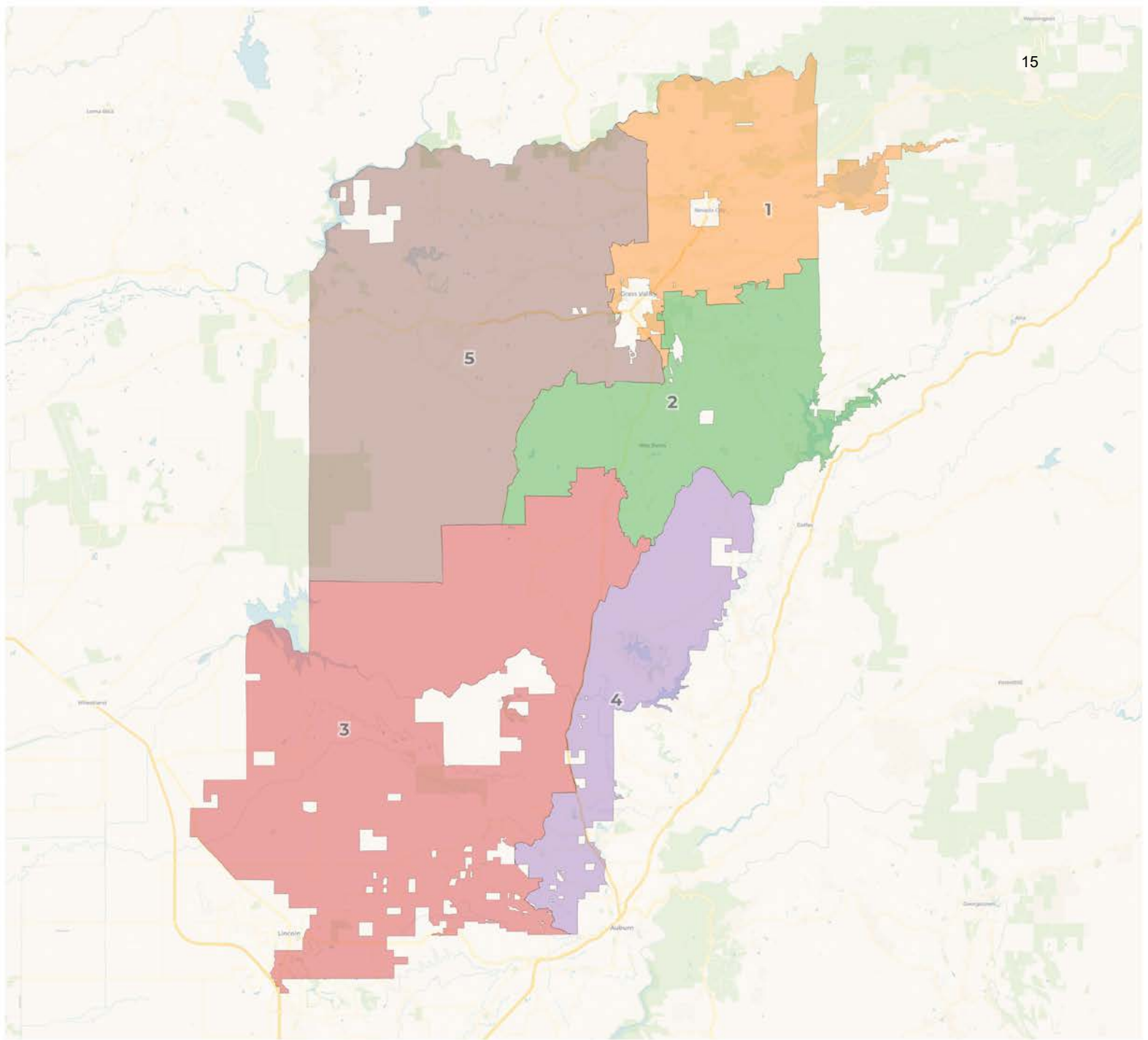


Draft Map Plans

Each draft plan is provided with both a PDF and Online Web-based format

- Draft Map A– Minimal change
- **Draft Map B – Unifying cities**
- Draft Map C – Revision of A





2020 Census

	1	2	3	4	5
Population	19,268	19,856	19,811	19,793	20,454
Deviation	-568	20	-25	-43	618
Deviation %	-2.9%	0.1%	-0.1%	-0.2%	3.1%
Other	17,425	17,996	17,042	16,221	18,189
Other %	90.4%	90.6%	86.0%	82.0%	88.9%
Latino	1,542	1,557	1,998	3,010	1,907
Latino %	8.0%	7.8%	10.1%	15.2%	9.3%
Asian	221	236	582	419	277
Asian %	1.1%	1.2%	2.9%	2.1%	1.4%
Black	80	67	189	143	81
Black %	0.4%	0.3%	1.0%	0.7%	0.4%

Citizen Voting Age Population (CVAP)

	1	2	3	4	5
Total CVAP	15,053	16,253	16,851	15,414	16,268
Other CVAP	13,750	15,252	14,783	13,981	14,941
Other CVAP %	91.3%	93.8%	87.7%	90.7%	91.8%
Latino CVAP	1,112	839	1,158	1,139	1,130
Latino CVAP %	7.4%	5.2%	6.9%	7.4%	6.9%
Asian CVAP	64	98	617	255	126
Asian CVAP %	0.4%	0.6%	3.7%	1.7%	0.8%
Black CVAP	127	64	293	39	71
Black CVAP %	0.8%	0.4%	1.7%	0.3%	0.4%

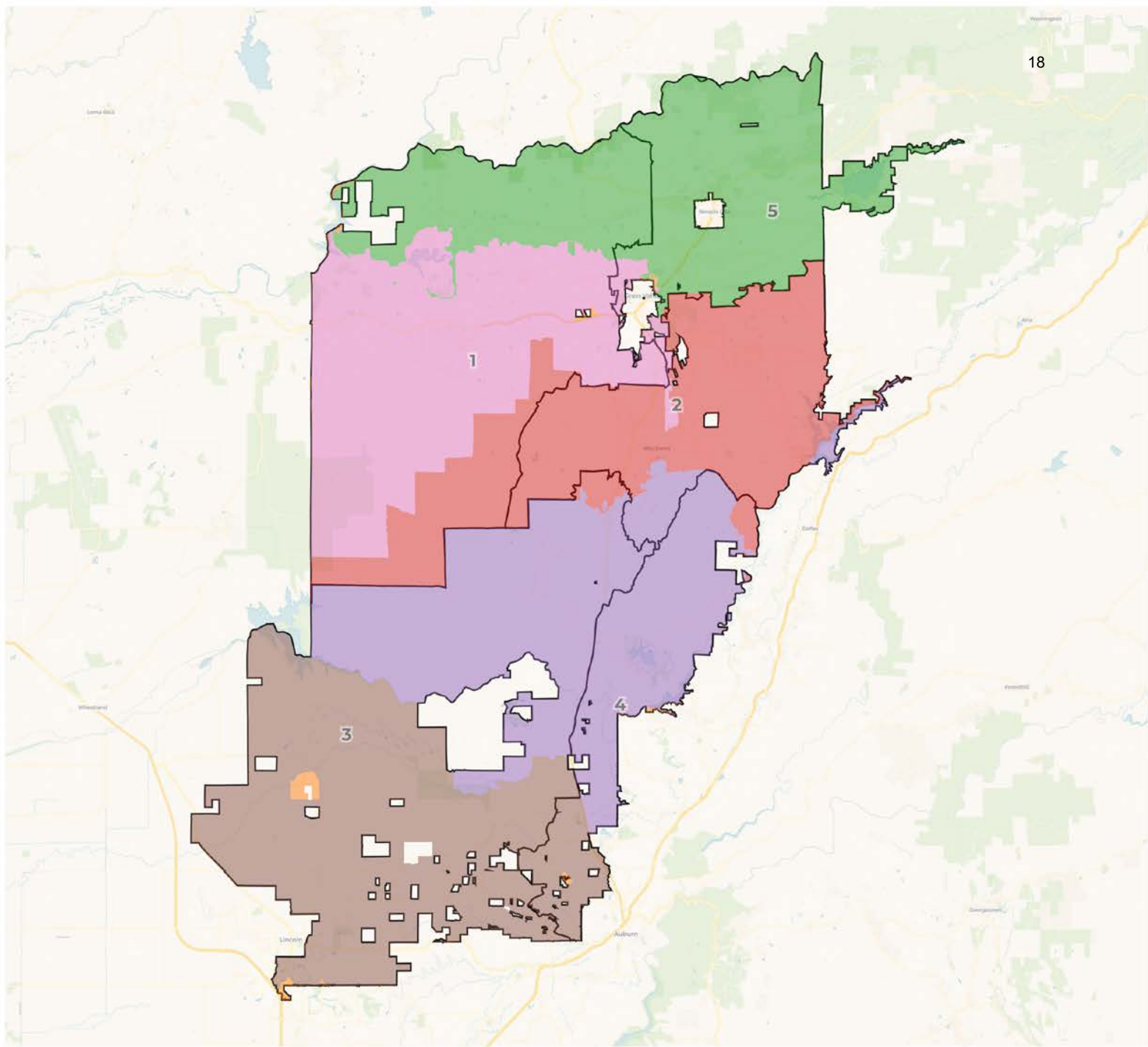
2020 Census

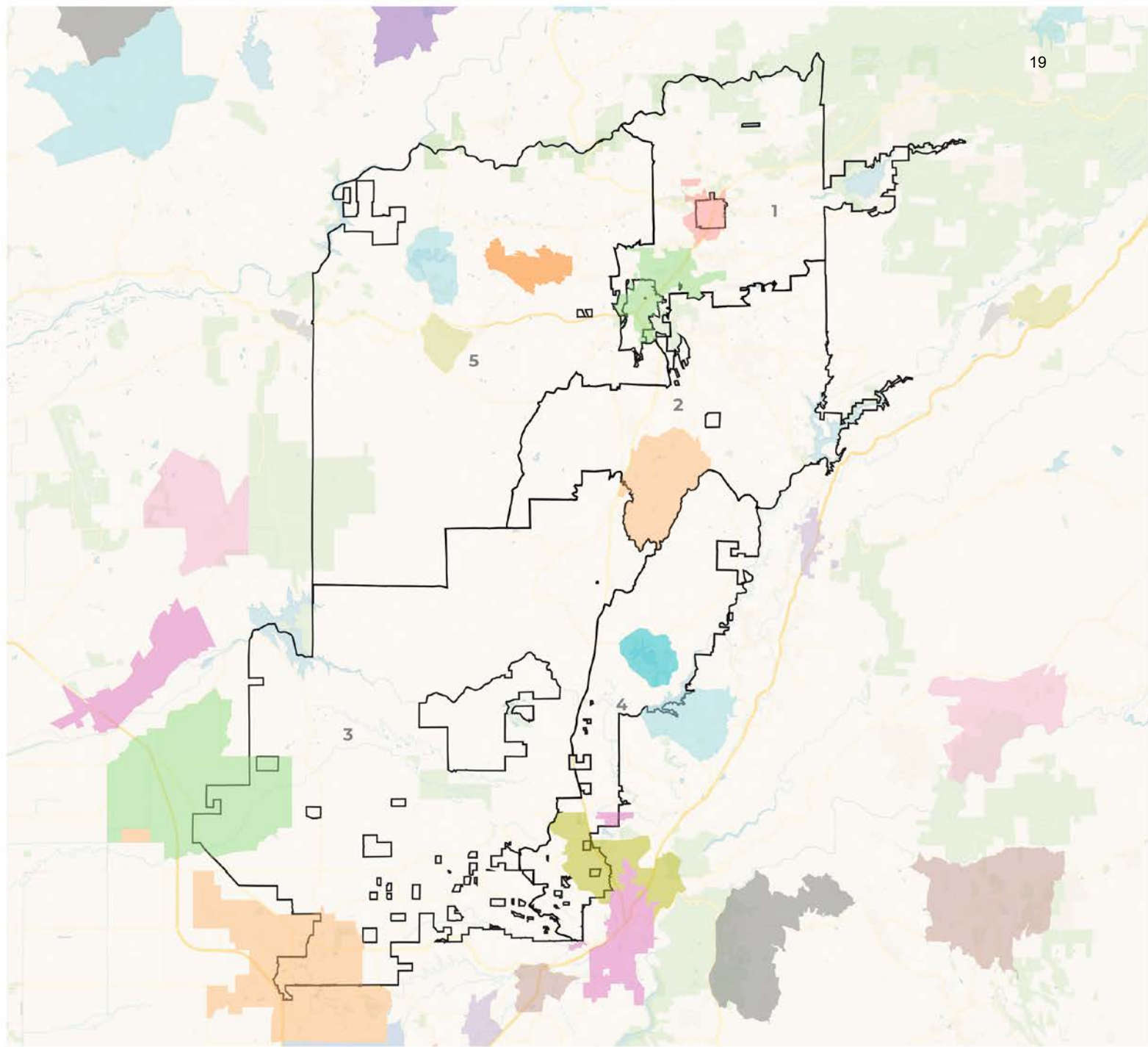
	1	2	3	4	5
Population	19,268	19,856	19,811	19,793	20,454
Deviation	-568	20	-25	-43	618
Deviation %	-2.9%	0.1%	-0.1%	-0.2%	3.1%
Other	17,425	17,996	17,042	16,221	18,189
Other %	90.4%	90.6%	86.0%	82.0%	88.9%
Latino					1,907
Latino %					9.3%
Asian	221	236	582	419	277
Asian %	1.1%	1.2%	2.9%	2.1%	1.4%
Black	80	67	189	143	81
Black %	0.4%	0.3%	1.0%	0.7%	0.4%

Deviation is 6%

Citizen Voting Age Population (CVAP)

	1	2	3	4	5
Total CVAP	15,053	16,253	16,851	15,414	16,268
Other CVAP	13,750	15,252	14,783	13,981	14,941
Other CVAP %	91.3%	93.8%	87.7%	90.7%	91.8%
Latino CVAP	1,112	839	1,158	1,139	1,130
Latino CVAP %	7.4%	5.2%	6.9%	7.4%	6.9%
Asian CVAP	64	98	617	255	126
Asian CVAP %	0.4%	0.6%	3.7%	1.7%	0.8%
Black CVAP	127	64	293	39	71
Black CVAP %	0.8%	0.4%	1.7%	0.3%	0.4%

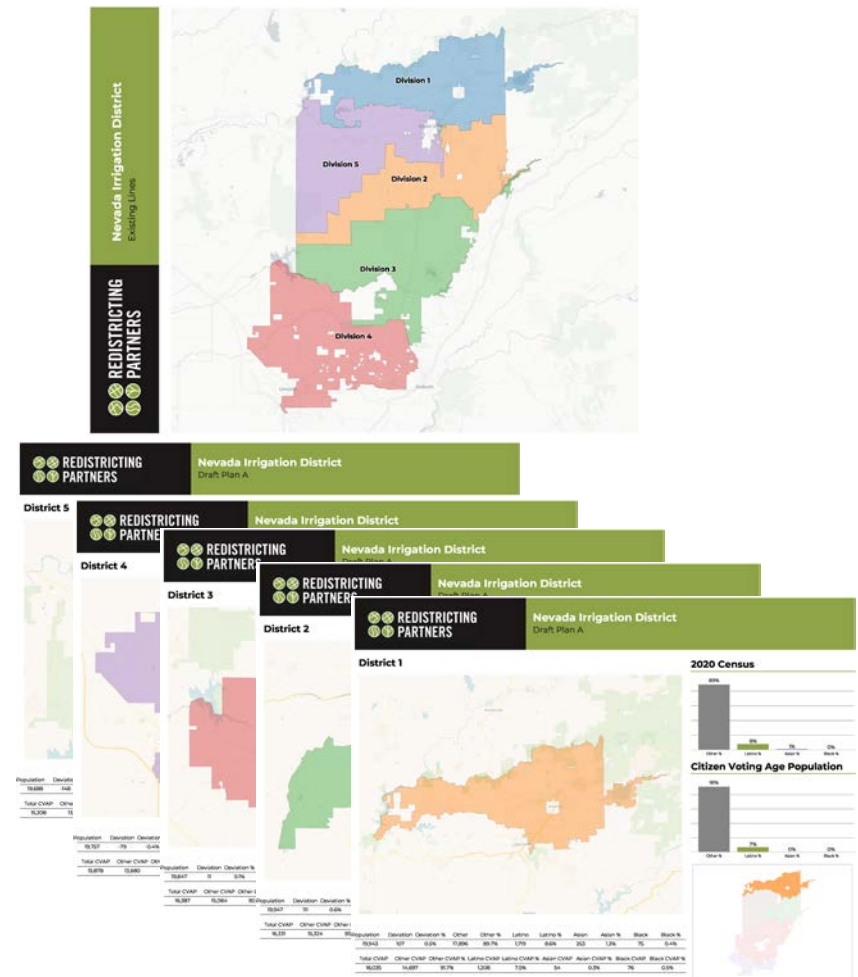


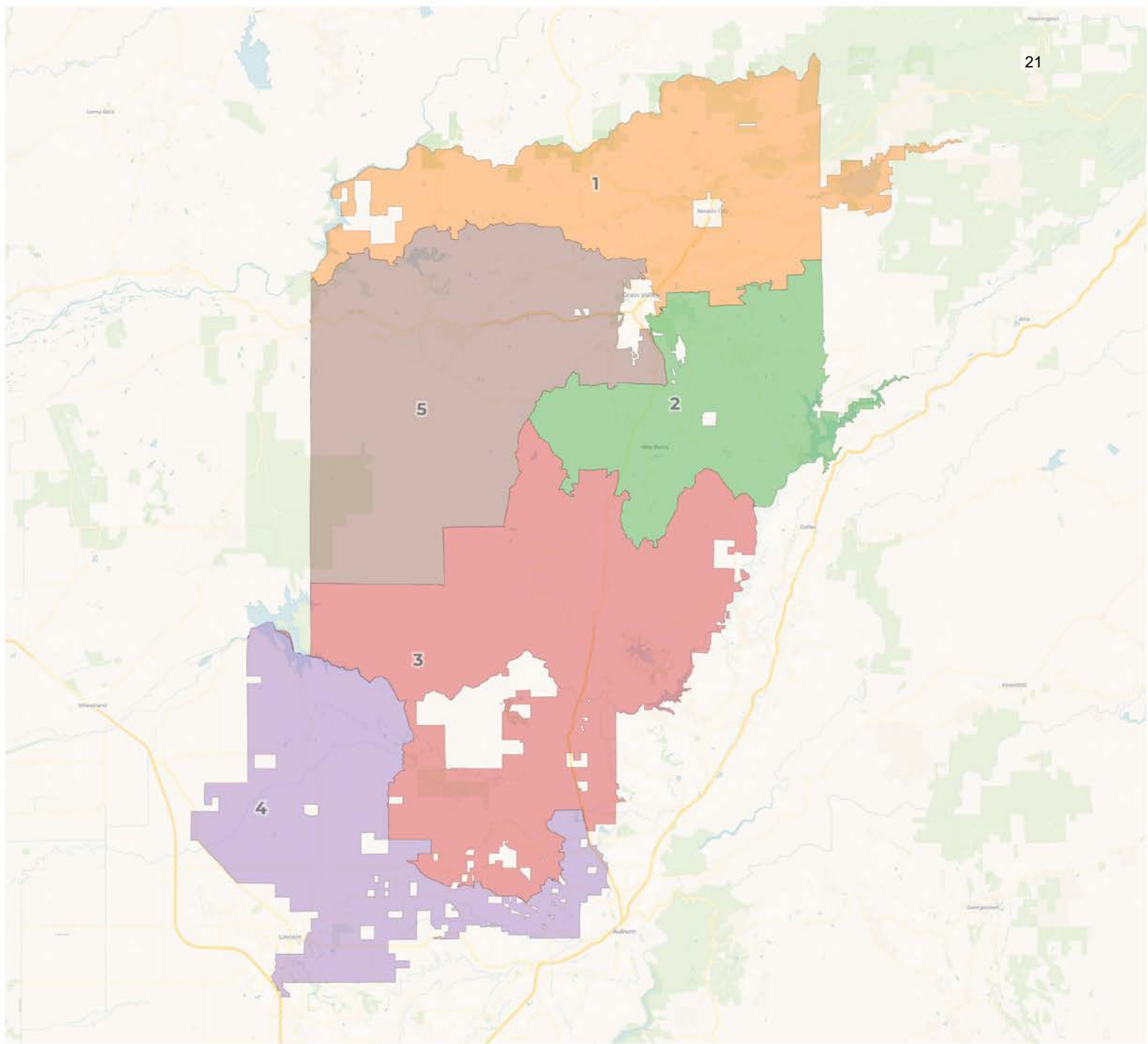


Draft Map Plans

Each draft plan is provided with both a PDF and Online Web-based format

- Draft Map A– Minimal change
- Draft Map B – Unifying cities
- Draft Map C – Revision of A





2020 Census

	1	2	3	4	5
Population	19,943	19,621	19,943	20,005	19,688
Deviation	103	-219	103	165	-152
Deviation %	0.5%	-1.1%	0.5%	0.8%	-0.8%
Other	17,896	17,755	17,757	15,840	17,639
Other %	89.7%	90.5%	89.0%	79.2%	89.6%
Latino	1,719	1,559	1,792	3,227	1,721
Latino %	8.6%	7.9%	9.0%	16.1%	8.7%
Asian	253	240	299	701	242
Asian %	1.3%	1.2%	1.5%	3.5%	1.2%
Black	75	67	95	237	86
Black %	0.4%	0.3%	0.5%	1.2%	0.4%

Citizen Voting Age Population (CVAP)

	1	2	3	4	5
Total CVAP	16,035	16,045	16,700	15,864	15,208
Other CVAP	14,697	15,039	15,368	13,693	13,922
Other CVAP %	91.7%	93.7%	92.0%	86.3%	91.5%
Latino CVAP	1,208	843	1,165	1,134	1,029
Latino CVAP %	7.5%	5.3%	7.0%	7.1%	6.8%
Asian CVAP	54	99	128	744	135
Asian CVAP %	0.3%	0.6%	0.8%	4.7%	0.9%
Black CVAP	76	64	39	293	122
Black CVAP %	0.5%	0.4%	0.2%	1.8%	0.8%

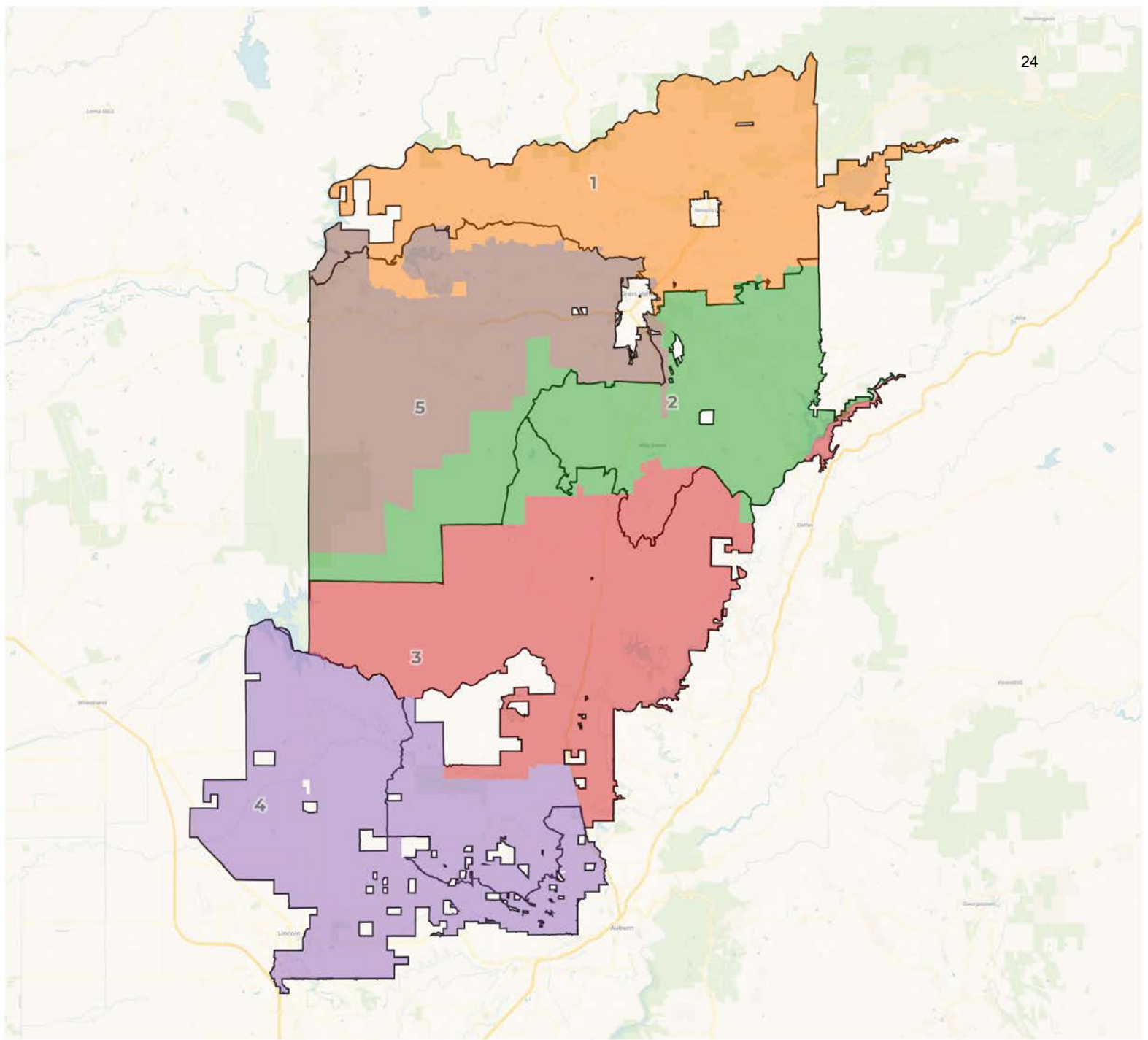
2020 Census

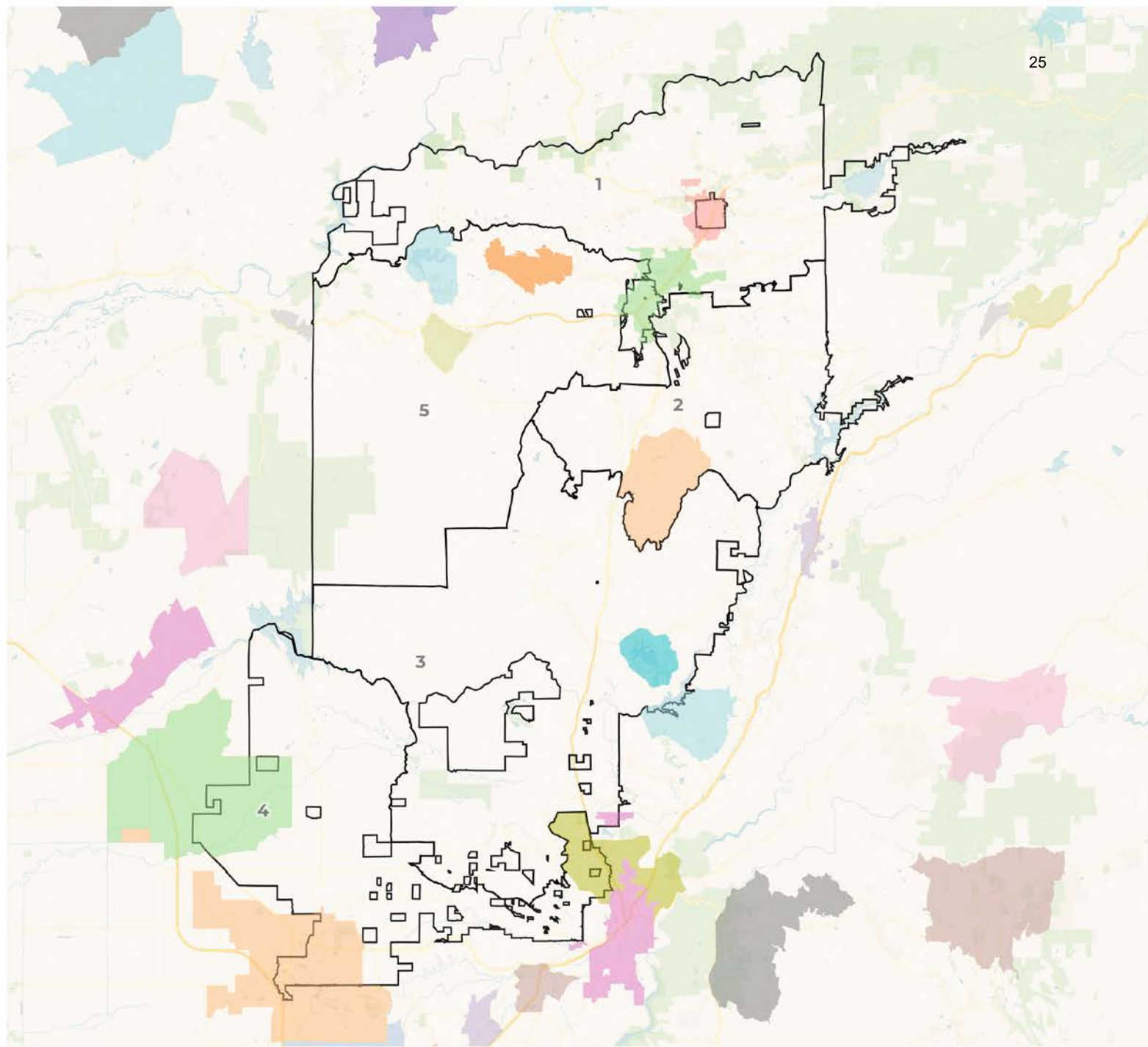
	1	2	3	4	5
Population	19,943	19,621	19,943	20,005	19,688
Deviation	103	-219	103	165	-152
Deviation %	0.5%	-1.1%	0.5%	0.8%	-0.8%
Other	17,896	17,755	17,757	15,840	17,639
Other %	89.7%	90.5%	89.0%	79.2%	89.6%
Latino					1,721
Latino %					8.7%
Asian	253	240	299	701	242
Asian %	1.3%	1.2%	1.5%	3.5%	1.2%
Black	75	67	95	237	86
Black %	0.4%	0.3%	0.5%	1.2%	0.4%

Deviation is 1.9%

Citizen Voting Age Population (CVAP)

	1	2	3	4	5
Total CVAP	16,035	16,045	16,700	15,864	15,208
Other CVAP	14,697	15,039	15,368	13,693	13,922
Other CVAP %	91.7%	93.7%	92.0%	86.3%	91.5%
Latino CVAP	1,208	843	1,165	1,134	1,029
Latino CVAP %	7.5%	5.3%	7.0%	7.1%	6.8%
Asian CVAP	54	99	128	744	135
Asian CVAP %	0.3%	0.6%	0.8%	4.7%	0.9%
Black CVAP	76	64	39	293	122
Black CVAP %	0.5%	0.4%	0.2%	1.8%	0.8%





Timeline

January 26, 2022

Draft Maps Presentation

February 2022

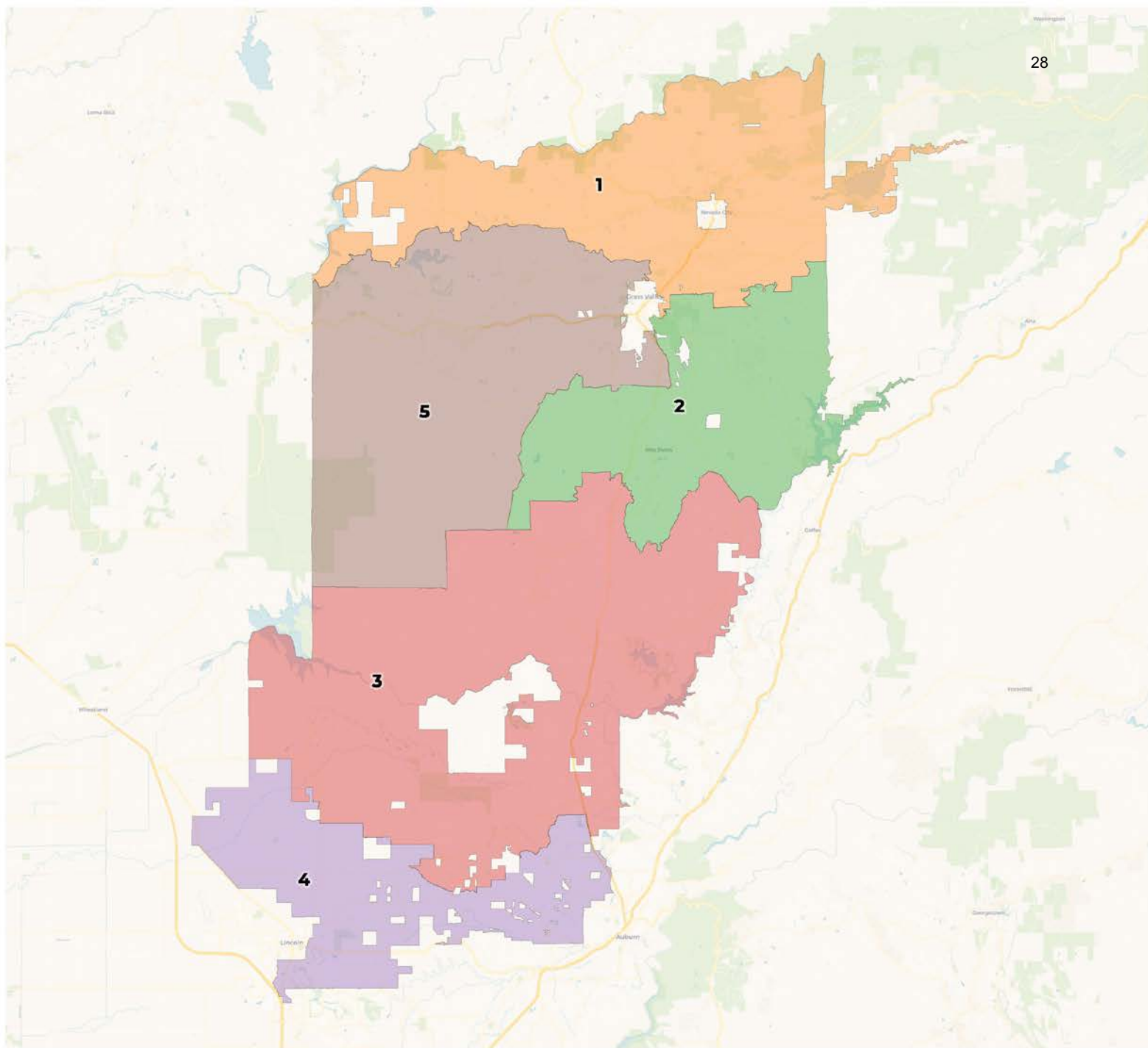
Draft Maps Revision

March 2022

Final Vote on Maps



REDISTRICTING PARTNERS



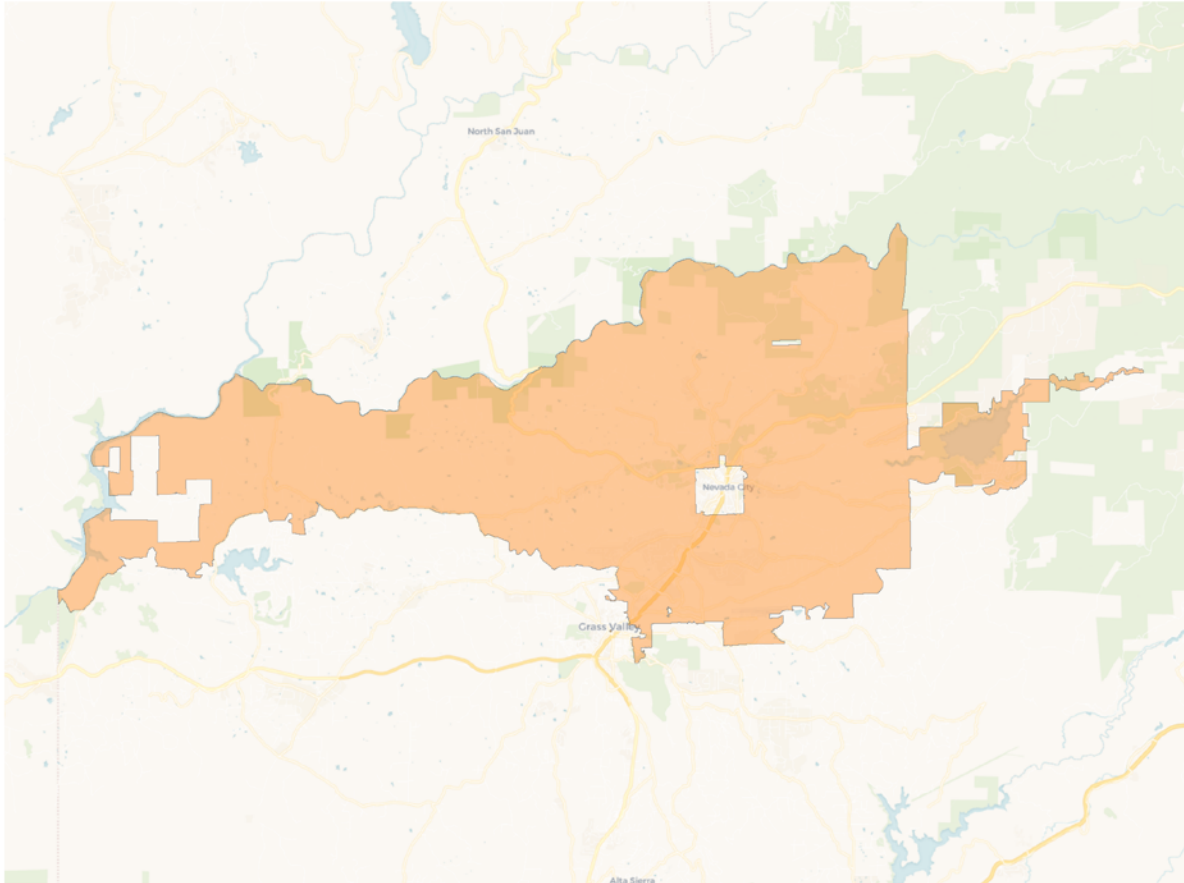
2020 Census

	1	2	3	4	5
Population	19,943	19,947	19,847	19,757	19,688
Deviation	107	111	11	-79	-148
Deviation %	0.5%	0.6%	0.1%	-0.4%	-0.7%
Other	17,896	18,075	17,622	15,641	17,639
Other %	89.7%	90.6%	88.8%	79.2%	89.6%
Latino	1,719	1,566	1,830	3,178	1,721
Latino %	8.6%	7.9%	9.2%	16.1%	8.7%
Asian	253	239	302	699	242
Asian %	1.3%	1.2%	1.5%	3.5%	1.2%
Black	75	67	93	239	86
Black %	0.4%	0.3%	0.5%	1.2%	0.4%

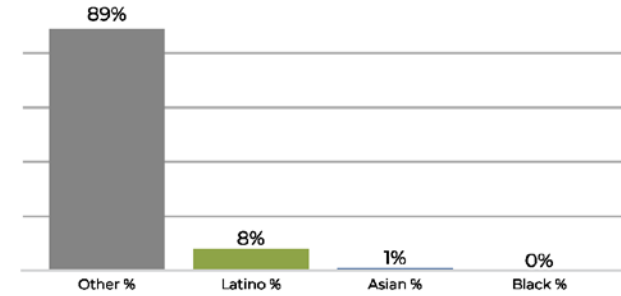
Citizen Voting Age Population (CVAP)

	1	2	3	4	5
Total CVAP	16,035	16,331	16,387	15,878	15,208
Other CVAP	14,697	15,324	15,084	13,680	13,922
Other CVAP %	91.7%	93.8%	92.0%	86.2%	91.5%
Latino CVAP	1,208	844	1,146	1,151	1,029
Latino CVAP %	7.5%	5.2%	7.0%	7.2%	6.8%
Asian CVAP	54	99	111	761	135
Asian CVAP %	0.3%	0.6%	0.7%	4.8%	0.9%
Black CVAP	76	64	46	286	122
Black CVAP %	0.5%	0.4%	0.3%	1.8%	0.8%

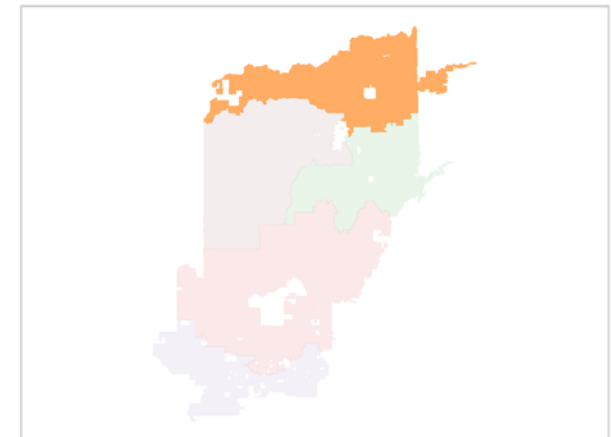
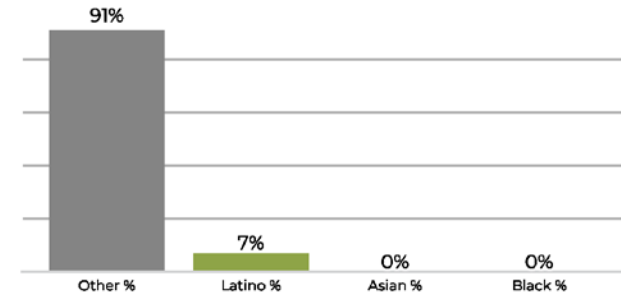
District 1



2020 Census

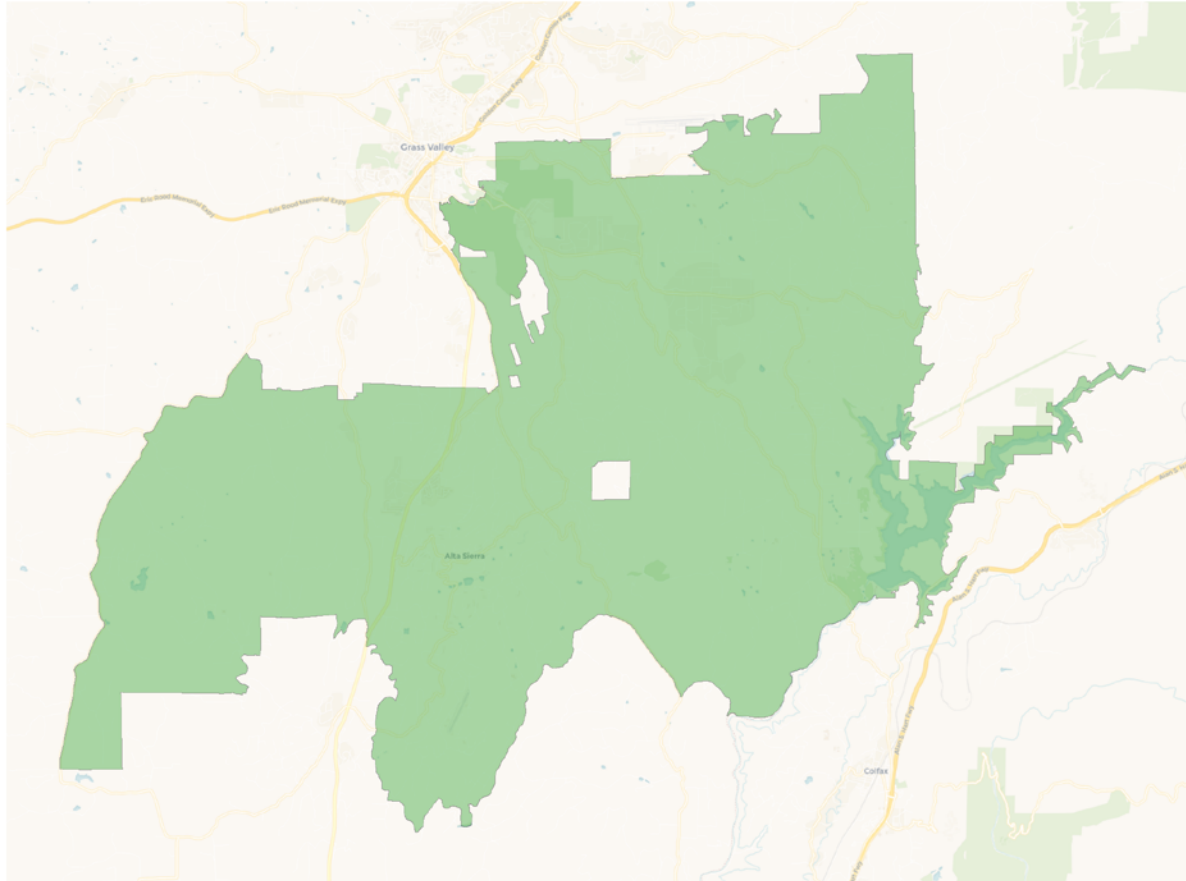


Citizen Voting Age Population

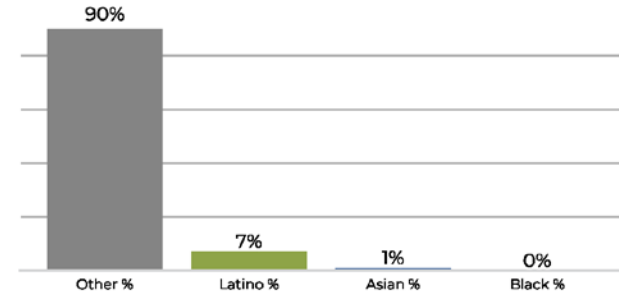


Population	Deviation	Deviation %	Other	Other %	Latino	Latino %	Asian	Asian %	Black	Black %
19,943	107	0.5%	17,896	89.7%	1,719	8.6%	253	1.3%	75	0.4%
Total CVAP	Other CVAP	Other CVAP %	Latino CVAP	Latino CVAP %	Asian CVAP	Asian CVAP %	Black CVAP	Black CVAP %		
16,035	14,697	91.7%	1,208	7.5%	54	0.3%	76	0.5%		

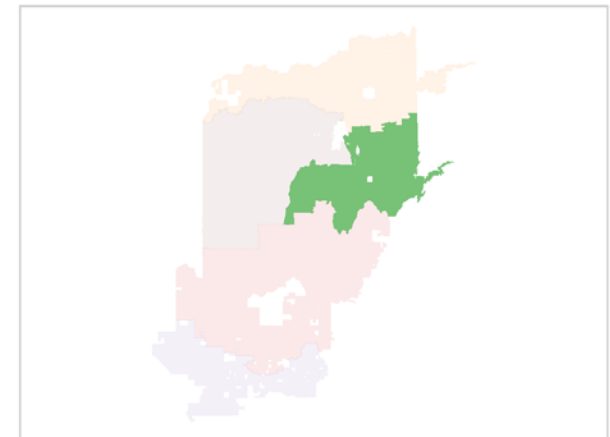
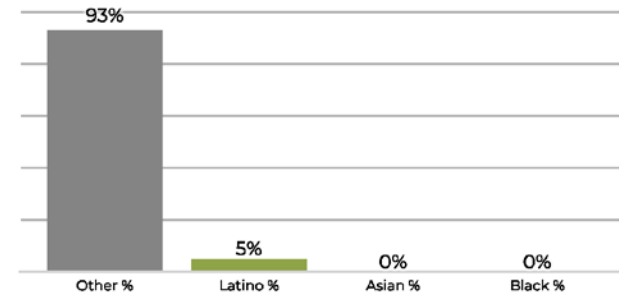
District 2



2020 Census

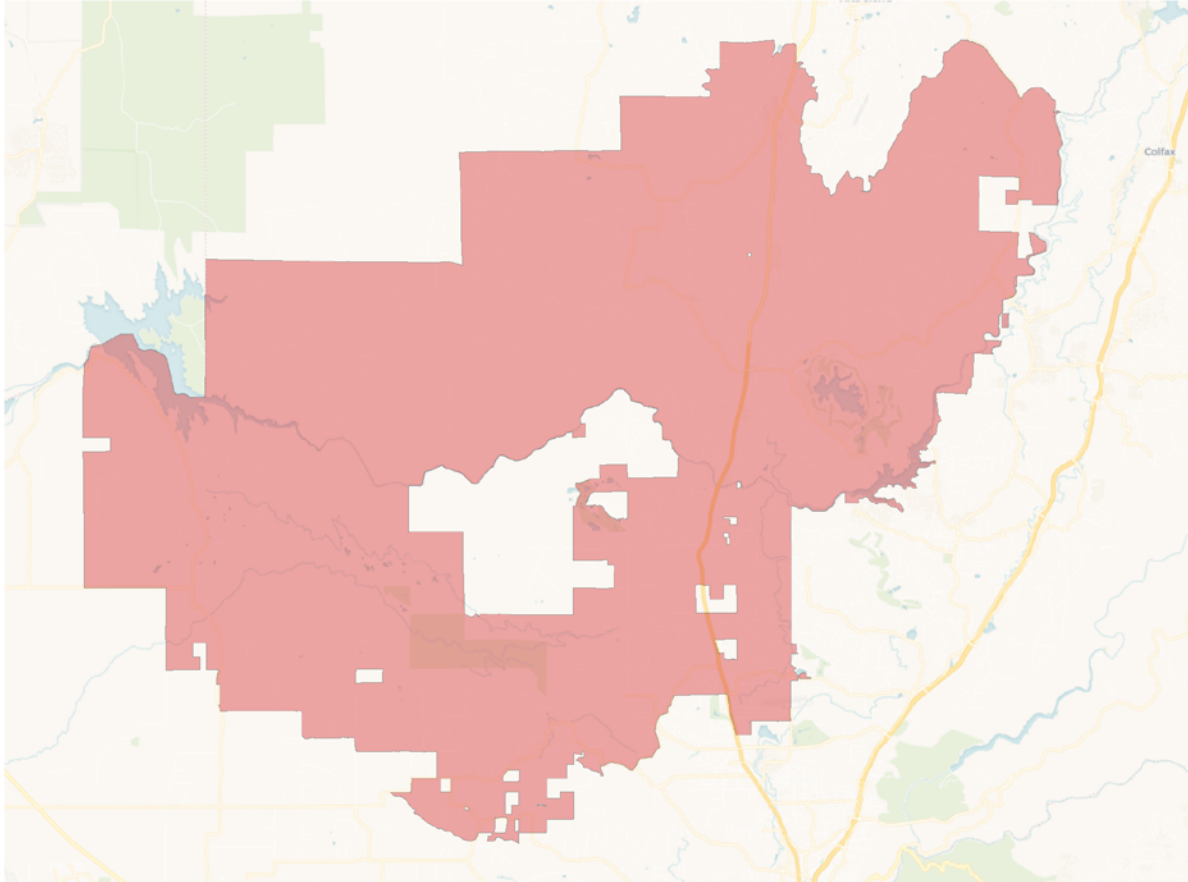


Citizen Voting Age Population

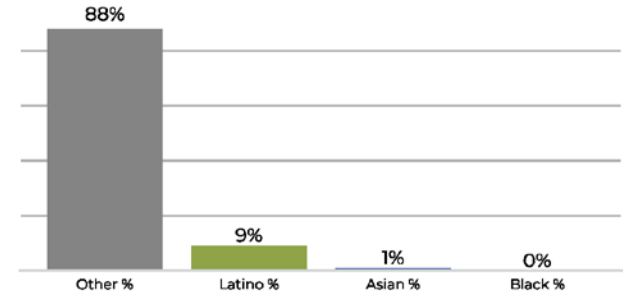


Population	Deviation	Deviation %	Other	Other %	Latino	Latino %	Asian	Asian %	Black	Black %
19,947	111	0.6%	18,075	90.6%	1,566	7.9%	239	1.2%	67	0.3%
Total CVAP	Other CVAP	Other CVAP %	Latino CVAP	Latino CVAP %	Asian CVAP	Asian CVAP %	Black CVAP	Black CVAP %		
16,331	15,324	93.8%	844	5.2%	99	0.6%	64	0.4%		

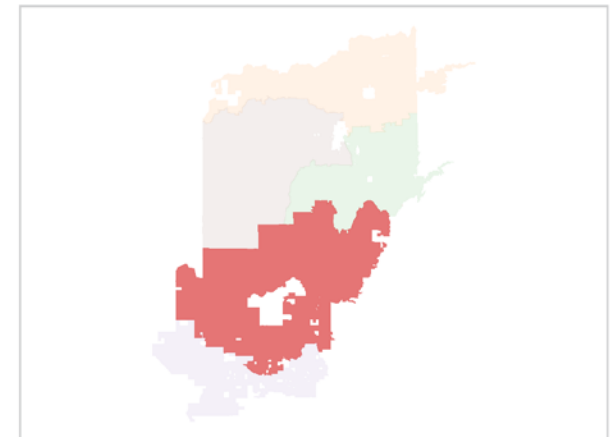
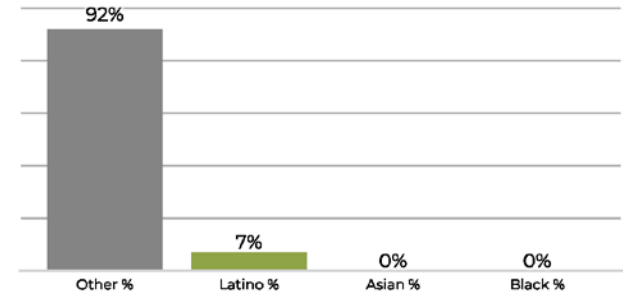
District 3



2020 Census

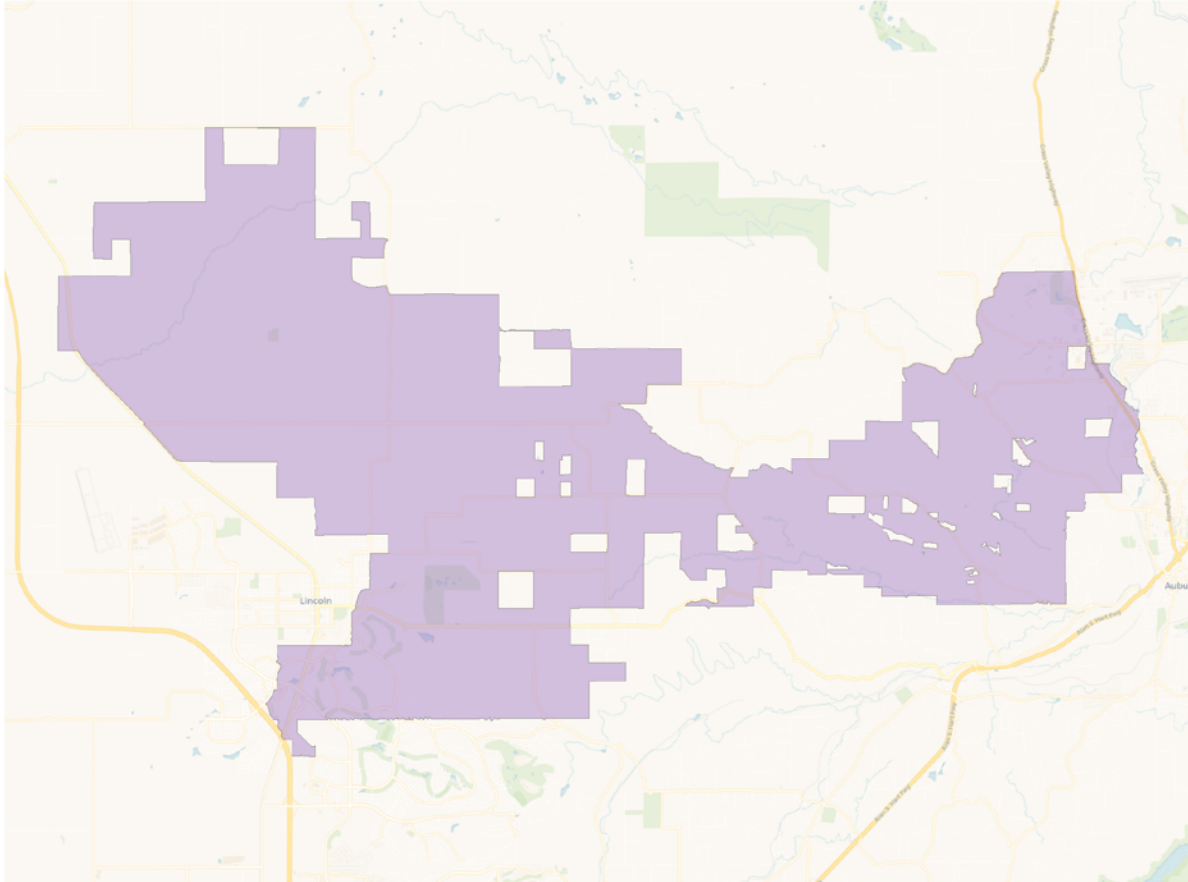


Citizen Voting Age Population

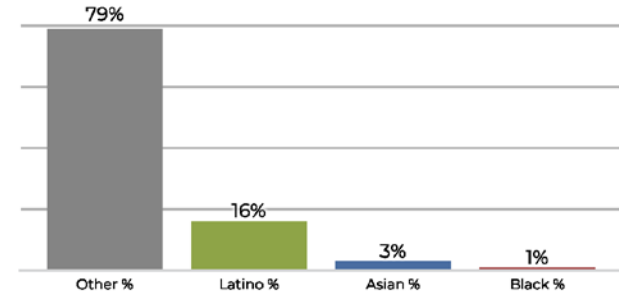


Population	Deviation	Deviation %	Other	Other %	Latino	Latino %	Asian	Asian %	Black	Black %
19,847	11	0.1%	17,622	88.8%	1,830	9.2%	302	1.5%	93	0.5%
Total CVAP	Other CVAP	Other CVAP %	Latino CVAP	Latino CVAP %	Asian CVAP	Asian CVAP %	Black CVAP	Black CVAP %		
16,387	15,084	92.0%	1,146	7.0%	111	0.7%	46	0.3%		

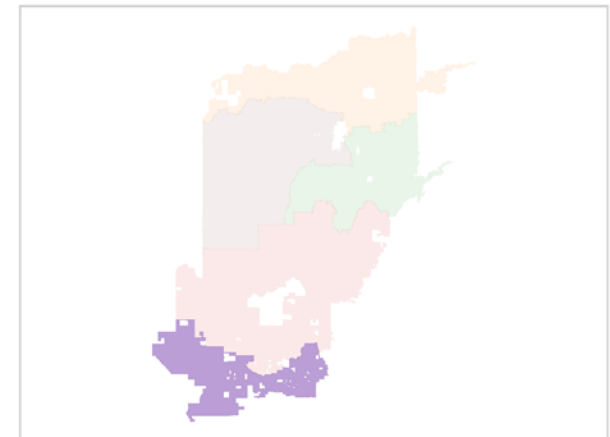
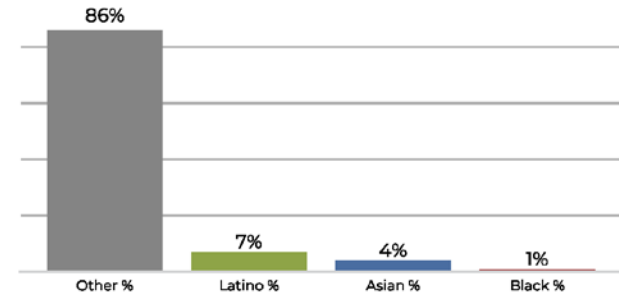
District 4



2020 Census

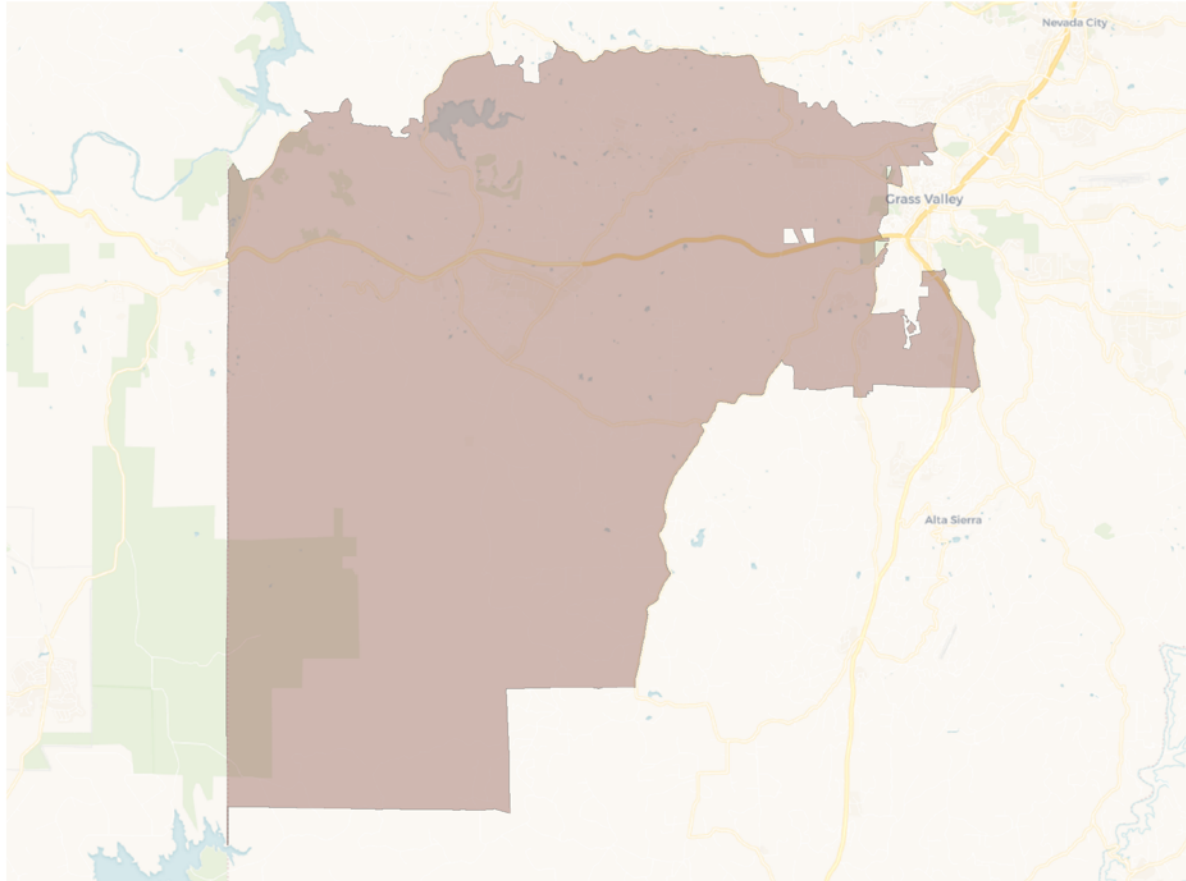


Citizen Voting Age Population

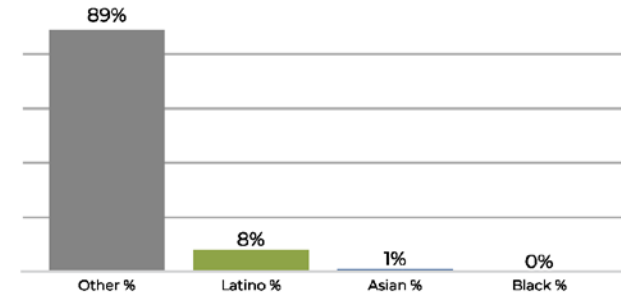


Population	Deviation	Deviation %	Other	Other %	Latino	Latino %	Asian	Asian %	Black	Black %
19,757	-79	-0.4%	15,641	79.2%	3,178	16.1%	699	3.5%	239	1.2%
Total CVAP	Other CVAP	Other CVAP %	Latino CVAP	Latino CVAP %	Asian CVAP	Asian CVAP %	Black CVAP	Black CVAP %		
15,878	13,680	86.2%	1,151	7.2%	761	4.8%	286	1.8%		

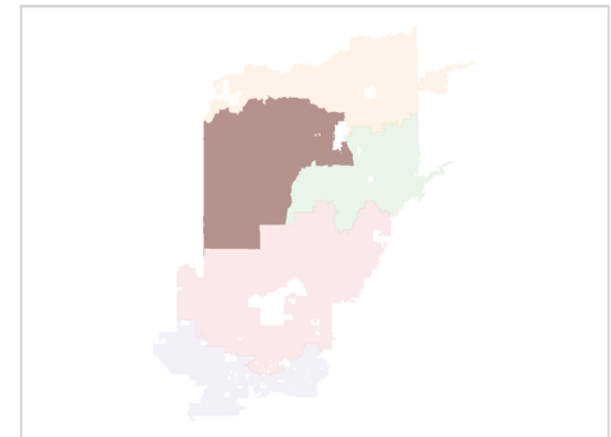
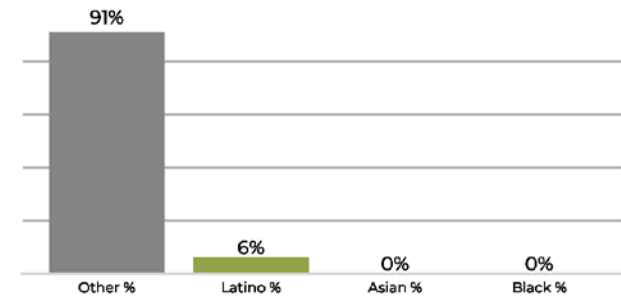
District 5



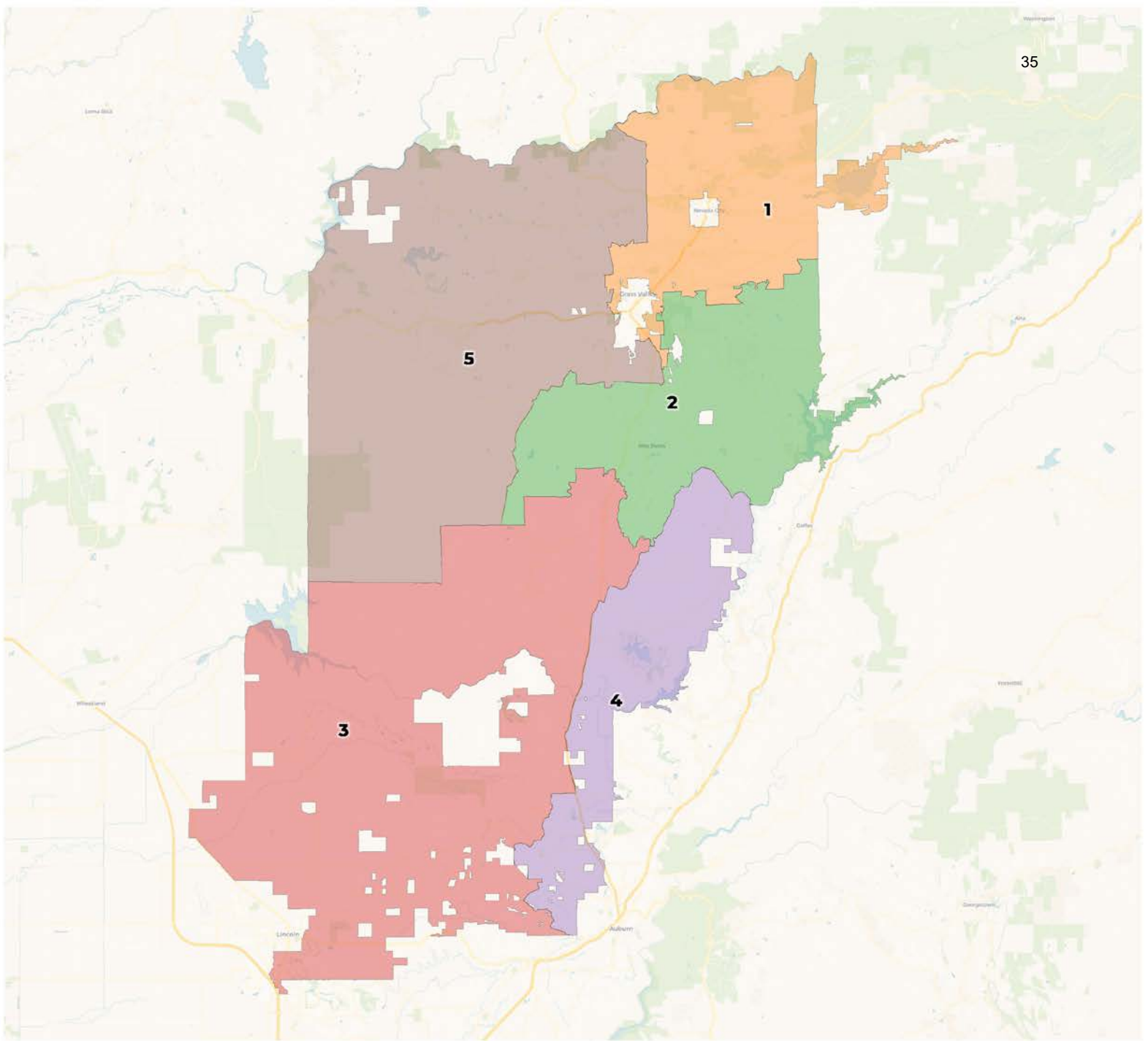
2020 Census



Citizen Voting Age Population



Population	Deviation	Deviation %	Other	Other %	Latino	Latino %	Asian	Asian %	Black	Black %
19,688	-148	-0.7%	17,639	89.6%	1,721	8.7%	242	1.2%	86	0.4%
Total CVAP	Other CVAP	Other CVAP %	Latino CVAP	Latino CVAP %	Asian CVAP	Asian CVAP %	Black CVAP	Black CVAP %		
15,208	13,922	91.5%	1,029	6.8%	135	0.9%	122	0.8%		



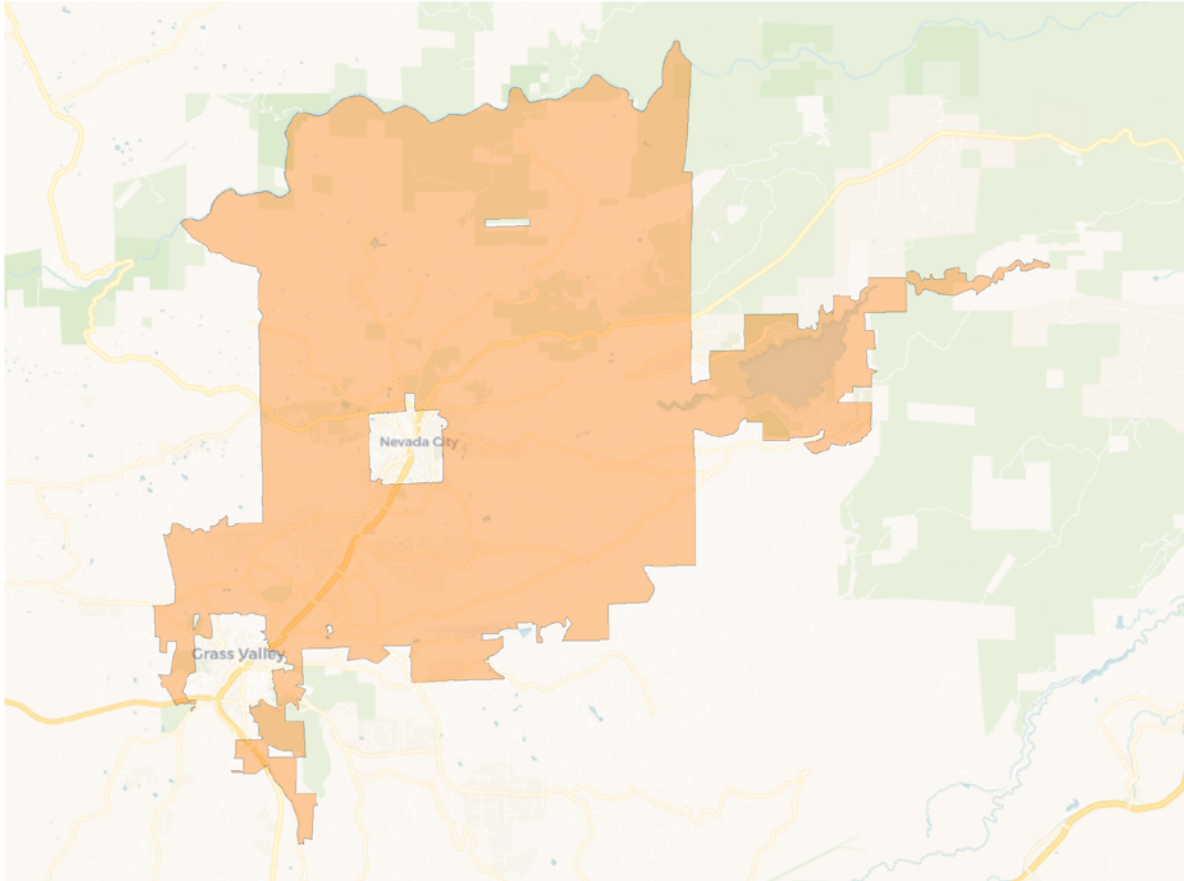
2020 Census

	1	2	3	4	5
Population	20,492	19,818	19,811	19,793	19,268
Deviation	656	-18	-25	-43	-568
Deviation %	3.3%	-0.1%	-0.1%	-0.2%	-2.9%
Other	18,225	17,960	17,042	16,221	17,425
Other %	88.9%	90.6%	86.0%	82.0%	90.4%
Latino	1,909	1,555	1,998	3,010	1,542
Latino %	9.3%	7.8%	10.1%	15.2%	8.0%
Asian	277	236	582	419	221
Asian %	1.4%	1.2%	2.9%	2.1%	1.1%
Black	81	67	189	143	80
Black %	0.4%	0.3%	1.0%	0.7%	0.4%

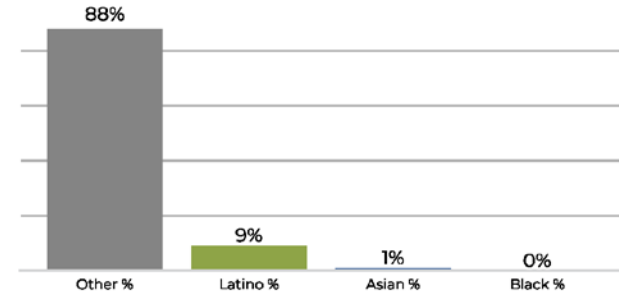
Citizen Voting Age Population (CVAP)

	1	2	3	4	5
Total CVAP	16,300	16,221	16,851	15,414	15,053
Other CVAP	14,971	15,222	14,783	13,981	13,750
Other CVAP %	91.8%	93.8%	87.7%	90.7%	91.3%
Latino CVAP	1,132	837	1,158	1,139	1,112
Latino CVAP %	6.9%	5.2%	6.9%	7.4%	7.4%
Asian CVAP	126	98	617	255	64
Asian CVAP %	0.8%	0.6%	3.7%	1.7%	0.4%
Black CVAP	71	64	293	39	127
Black CVAP %	0.4%	0.4%	1.7%	0.3%	0.8%

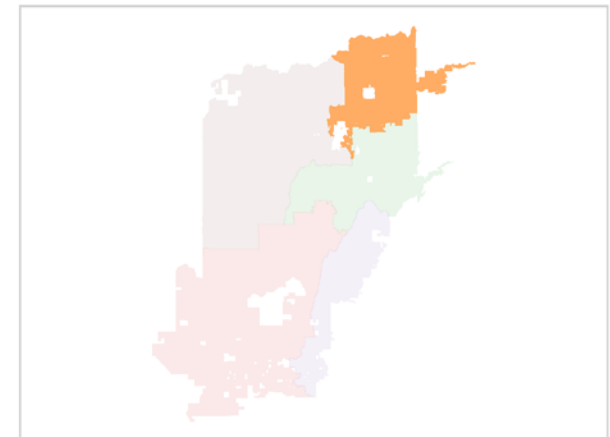
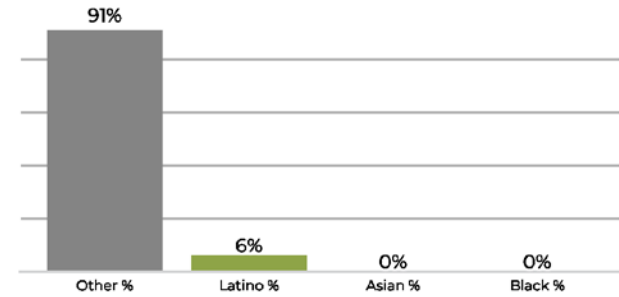
District 1



2020 Census

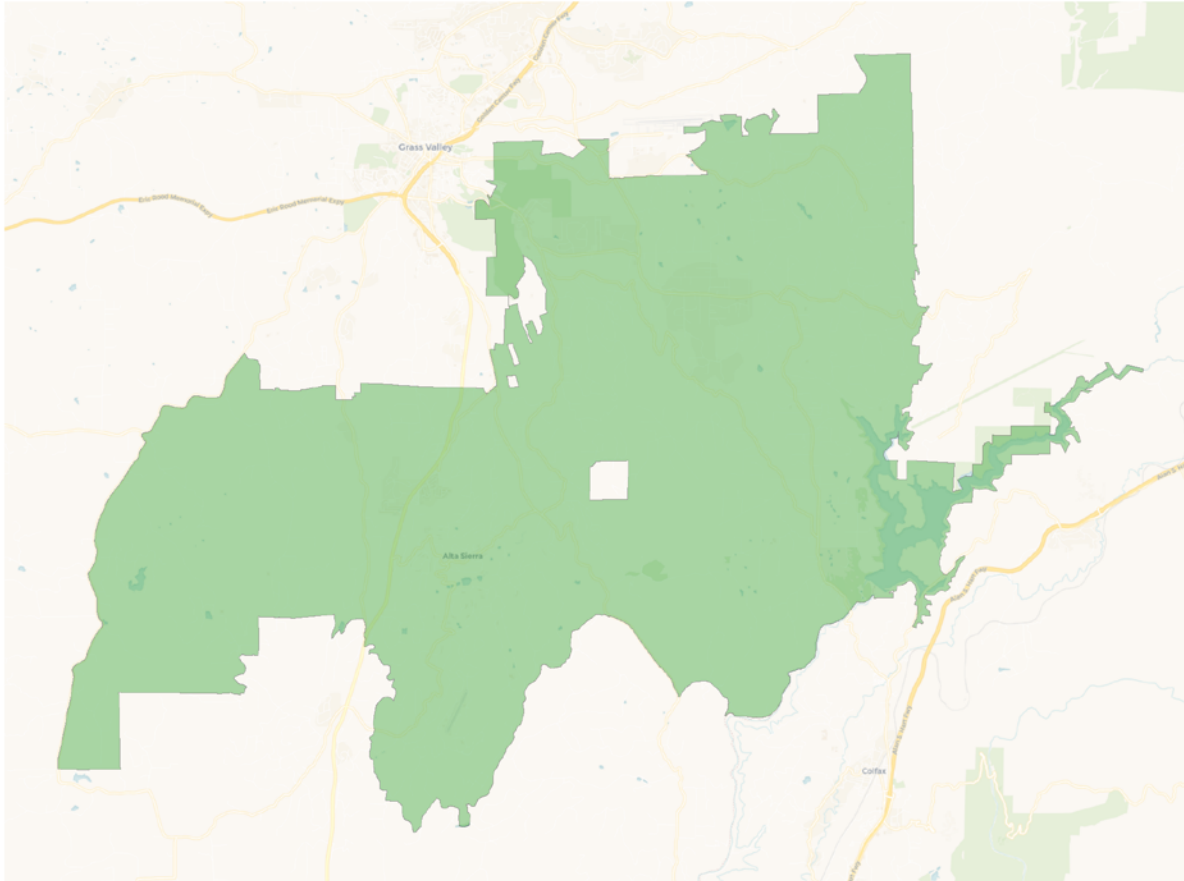


Citizen Voting Age Population

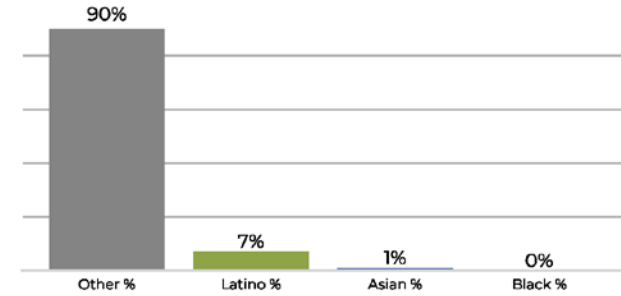


Population	Deviation	Deviation %	Other	Other %	Latino	Latino %	Asian	Asian %	Black	Black %
20,492	656	3.3%	18,225	88.9%	1,909	9.3%	277	1.4%	81	0.4%
Total CVAP	Other CVAP	Other CVAP %	Latino CVAP	Latino CVAP %	Asian CVAP	Asian CVAP %	Black CVAP	Black CVAP %		
16,300	14,971	91.8%	1,132	6.9%	126	0.8%	71	0.4%		

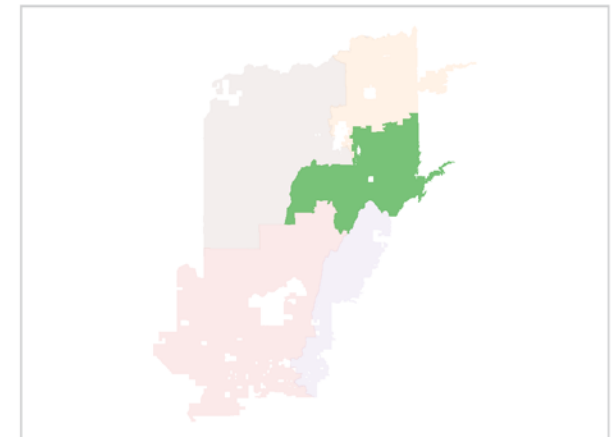
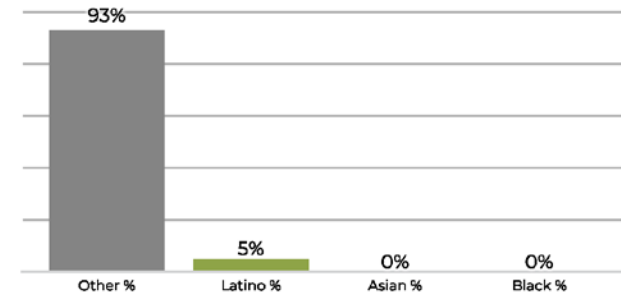
District 2



2020 Census

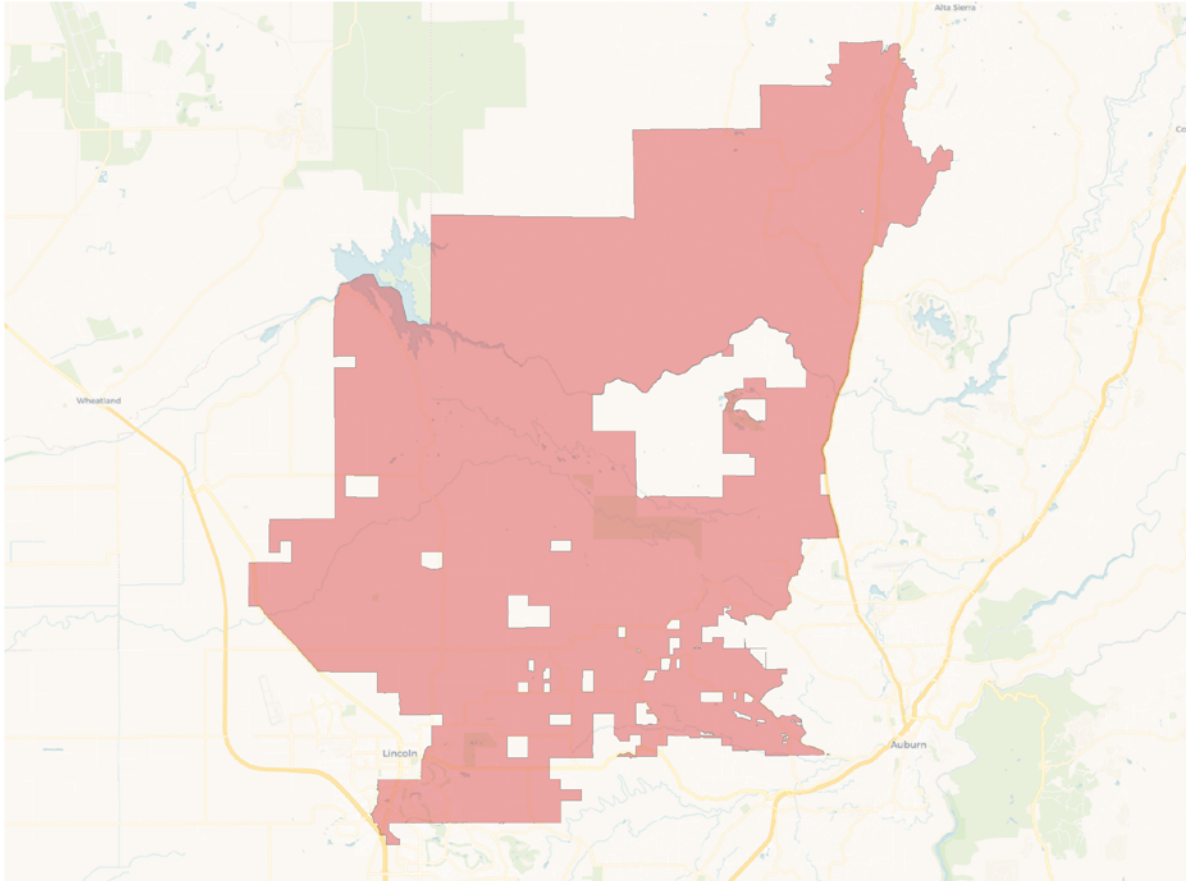


Citizen Voting Age Population

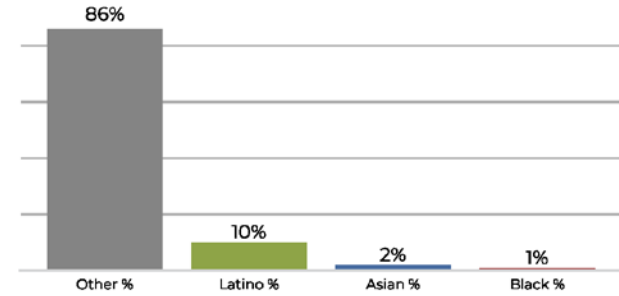


Population	Deviation	Deviation %	Other	Other %	Latino	Latino %	Asian	Asian %	Black	Black %
19,818	-18	-0.1%	17,960	90.6%	1,555	7.8%	236	1.2%	67	0.3%
Total CVAP	Other CVAP	Other CVAP %	Latino CVAP	Latino CVAP %	Asian CVAP	Asian CVAP %	Black CVAP	Black CVAP %		
16,221	15,222	93.8%	837	5.2%	98	0.6%	64	0.4%		

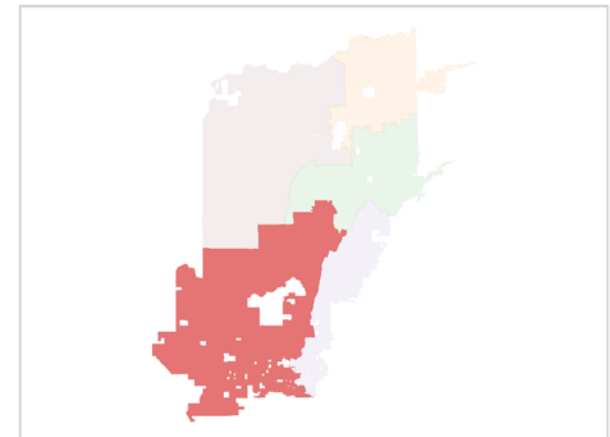
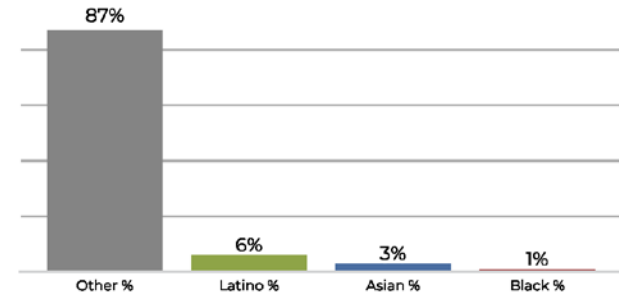
District 3



2020 Census

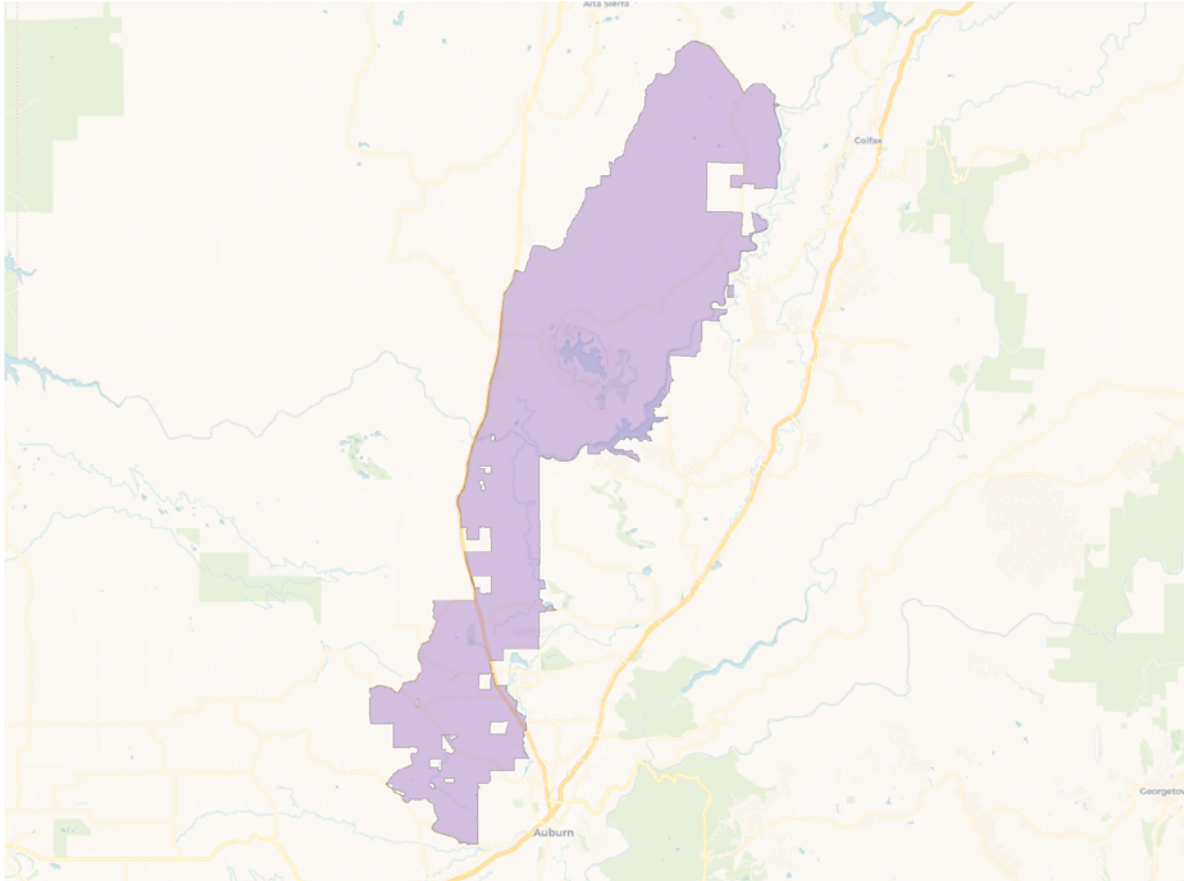


Citizen Voting Age Population

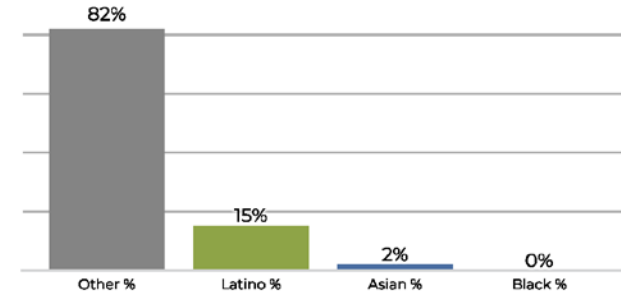


Population	Deviation	Deviation %	Other	Other %	Latino	Latino %	Asian	Asian %	Black	Black %
19,811	-25	-0.1%	17,042	86.0%	1,998	10.1%	582	2.9%	189	1.0%
Total CVAP	Other CVAP	Other CVAP %	Latino CVAP	Latino CVAP %	Asian CVAP	Asian CVAP %	Black CVAP	Black CVAP %		
16,851	14,783	87.7%	1,158	6.9%	617	3.7%	293	1.7%		

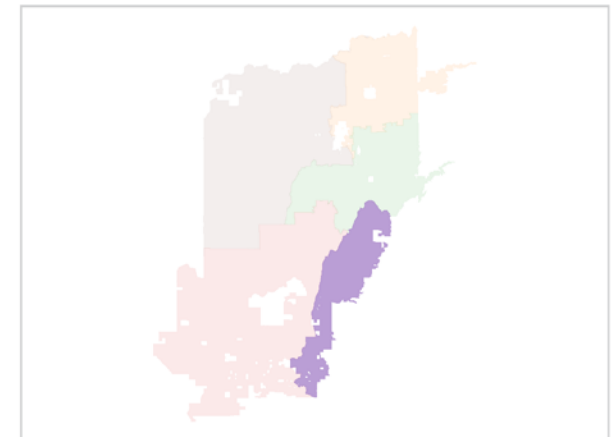
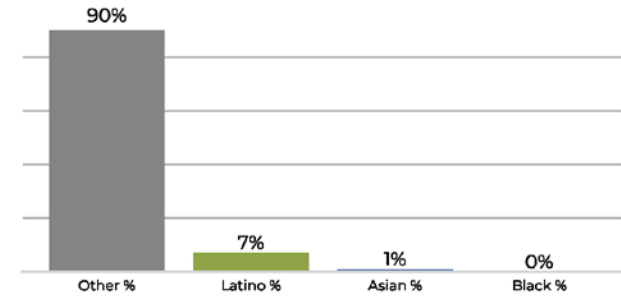
District 4



2020 Census

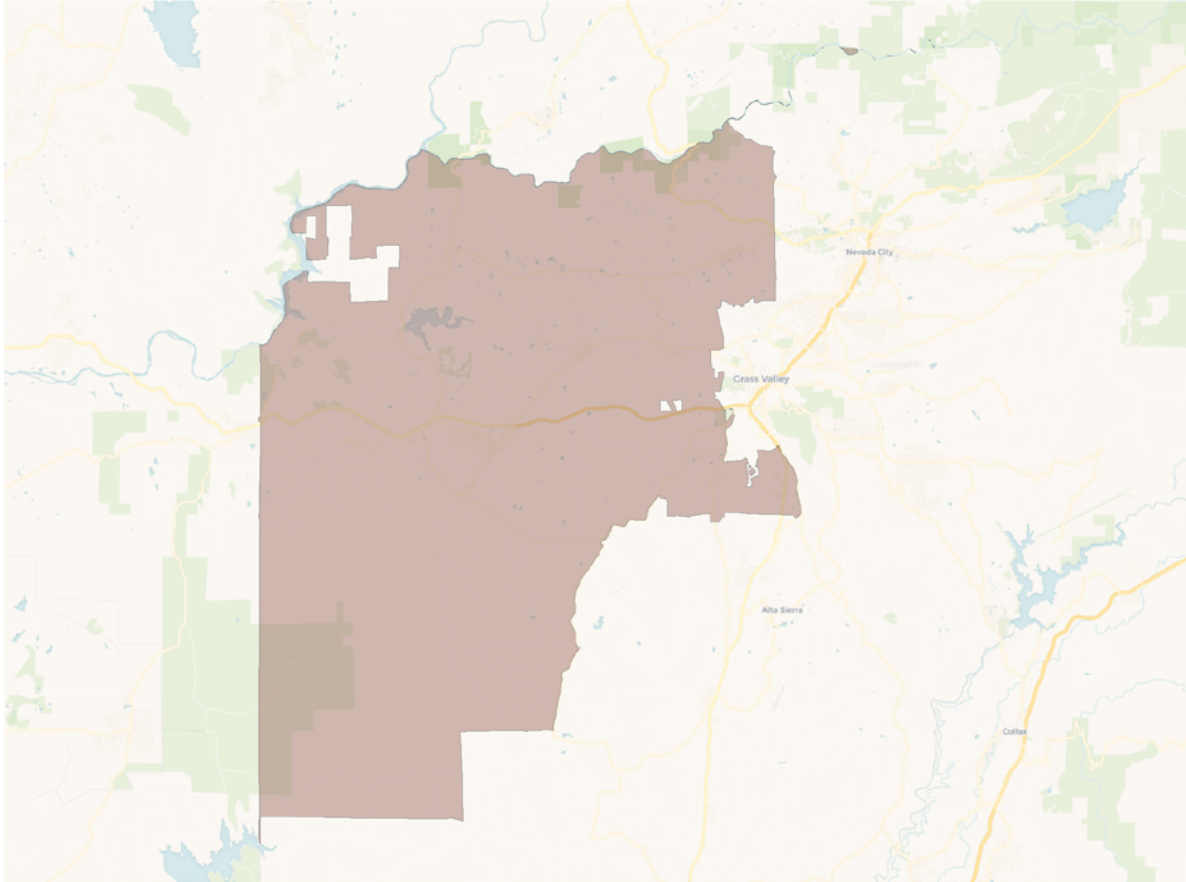


Citizen Voting Age Population

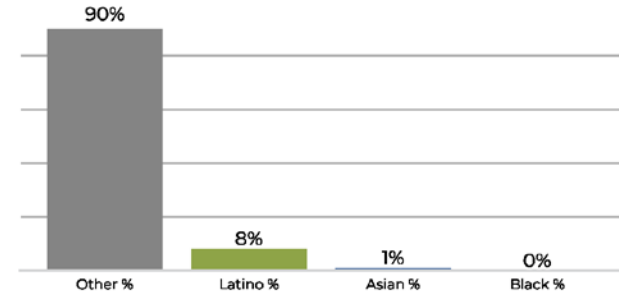


Population	Deviation	Deviation %	Other	Other %	Latino	Latino %	Asian	Asian %	Black	Black %
19,793	-43	-0.2%	16,221	82.0%	3,010	15.2%	419	2.1%	143	0.7%
Total CVAP	Other CVAP	Other CVAP %	Latino CVAP	Latino CVAP %	Asian CVAP	Asian CVAP %	Black CVAP	Black CVAP %		
15,414	13,981	90.7%	1,139	7.4%	255	1.7%	39	0.3%		

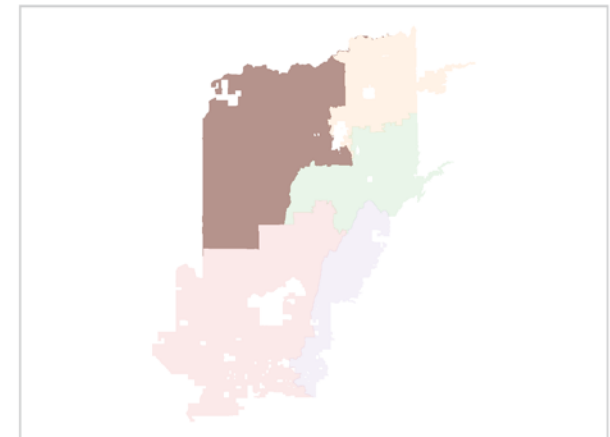
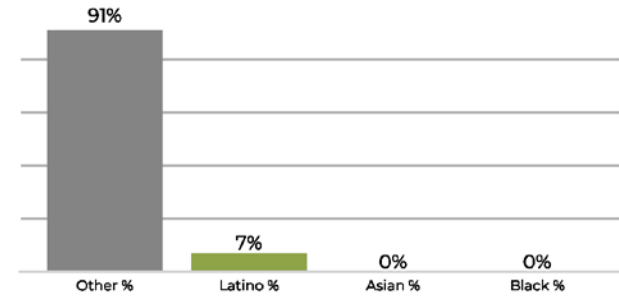
District 5



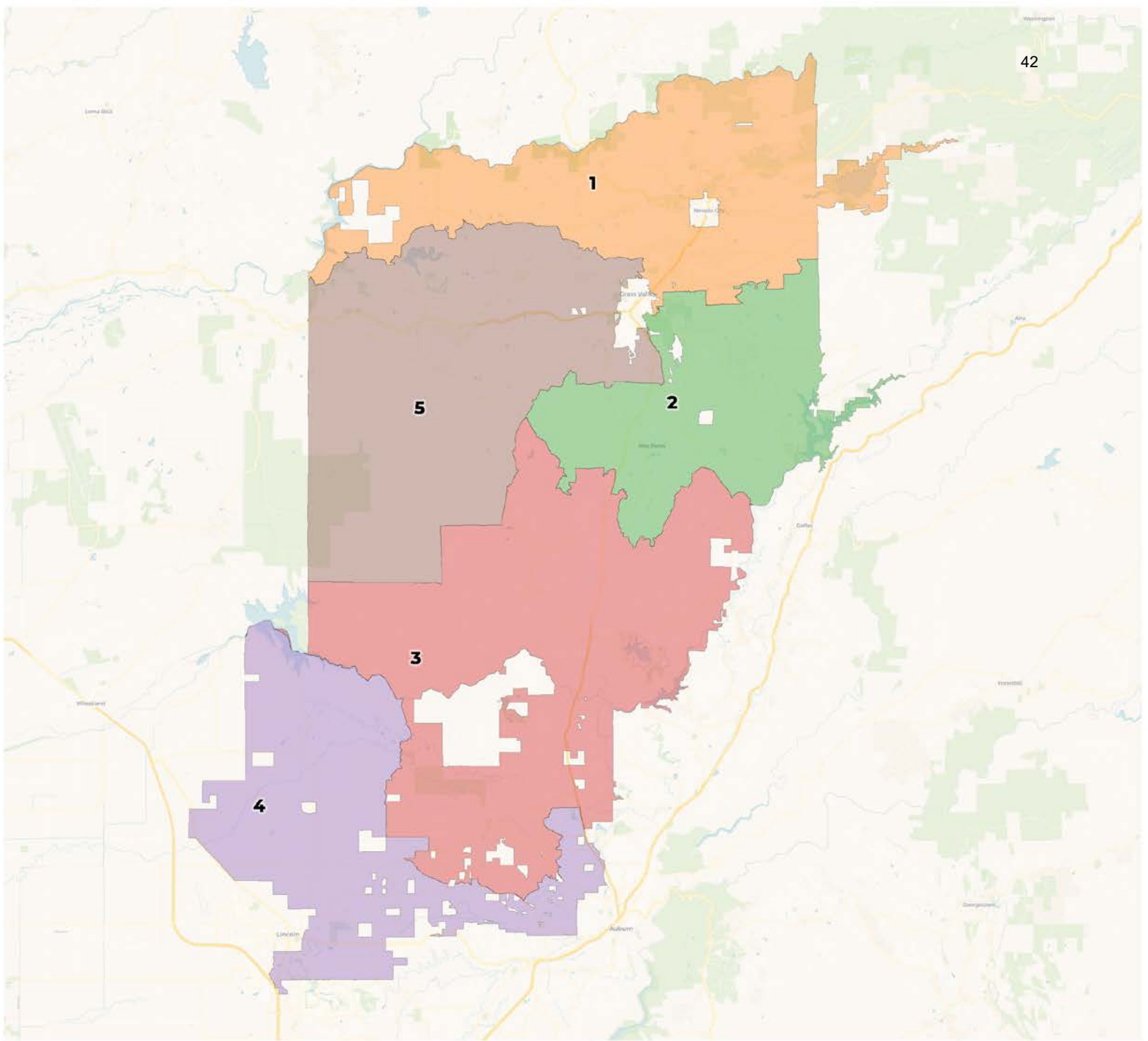
2020 Census



Citizen Voting Age Population



Population	Deviation	Deviation %	Other	Other %	Latino	Latino %	Asian	Asian %	Black	Black %
19,268	-568	-2.9%	17,425	90.4%	1,542	8.0%	221	1.1%	80	0.4%
Total CVAP	Other CVAP	Other CVAP %	Latino CVAP	Latino CVAP %	Asian CVAP	Asian CVAP %	Black CVAP	Black CVAP %		
15,053	13,750	91.3%	1,112	7.4%	64	0.4%	127	0.8%		



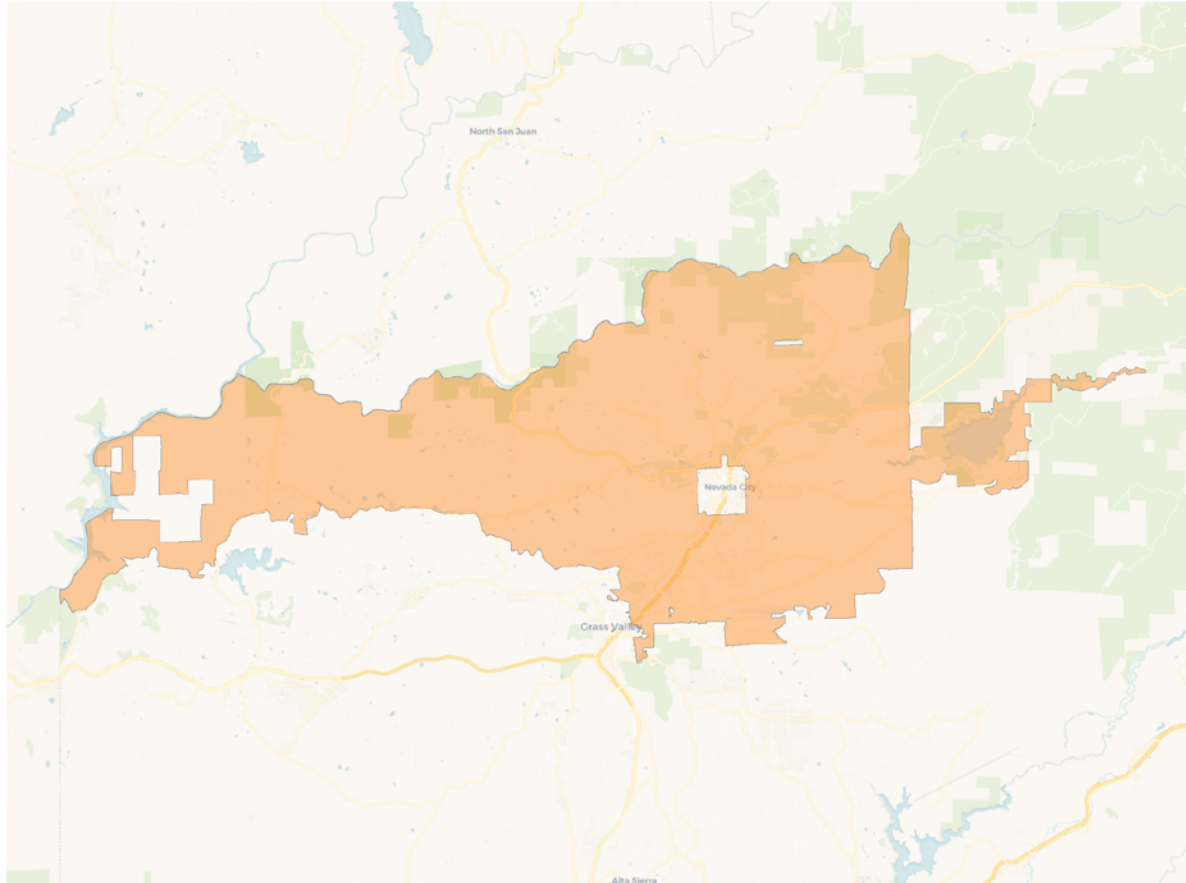
2020 Census

	1	2	3	4	5
Population	19,943	19,621	19,943	20,005	19,688
Deviation	103	-219	103	165	-152
Deviation %	0.5%	-1.1%	0.5%	0.8%	-0.8%
Other	17,896	17,755	17,757	15,840	17,639
Other %	89.7%	90.5%	89.0%	79.2%	89.6%
Latino	1,719	1,559	1,792	3,227	1,721
Latino %	8.6%	7.9%	9.0%	16.1%	8.7%
Asian	253	240	299	701	242
Asian %	1.3%	1.2%	1.5%	3.5%	1.2%
Black	75	67	95	237	86
Black %	0.4%	0.3%	0.5%	1.2%	0.4%

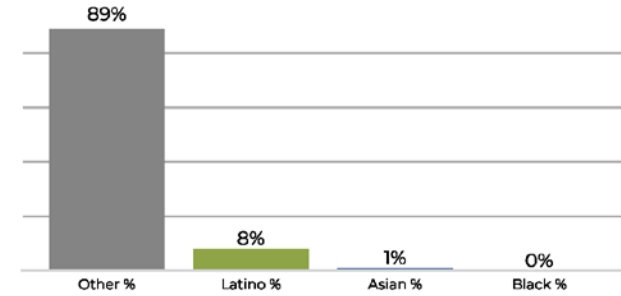
Citizen Voting Age Population (CVAP)

	1	2	3	4	5
Total CVAP	16,035	16,045	16,700	15,864	15,208
Other CVAP	14,697	15,039	15,368	13,693	13,922
Other CVAP %	91.7%	93.7%	92.0%	86.3%	91.5%
Latino CVAP	1,208	843	1,165	1,134	1,029
Latino CVAP %	7.5%	5.3%	7.0%	7.1%	6.8%
Asian CVAP	54	99	128	744	135
Asian CVAP %	0.3%	0.6%	0.8%	4.7%	0.9%
Black CVAP	76	64	39	293	122
Black CVAP %	0.5%	0.4%	0.2%	1.8%	0.8%

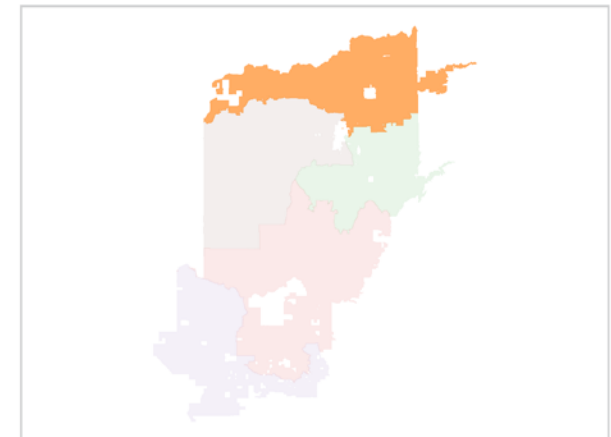
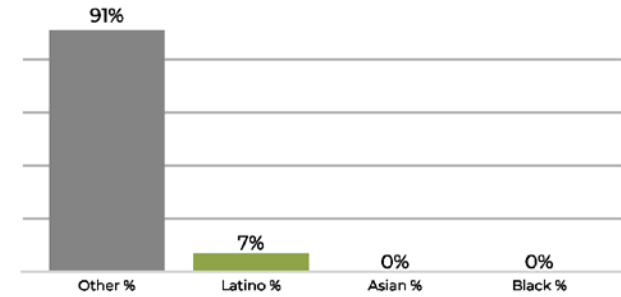
District 1



2020 Census

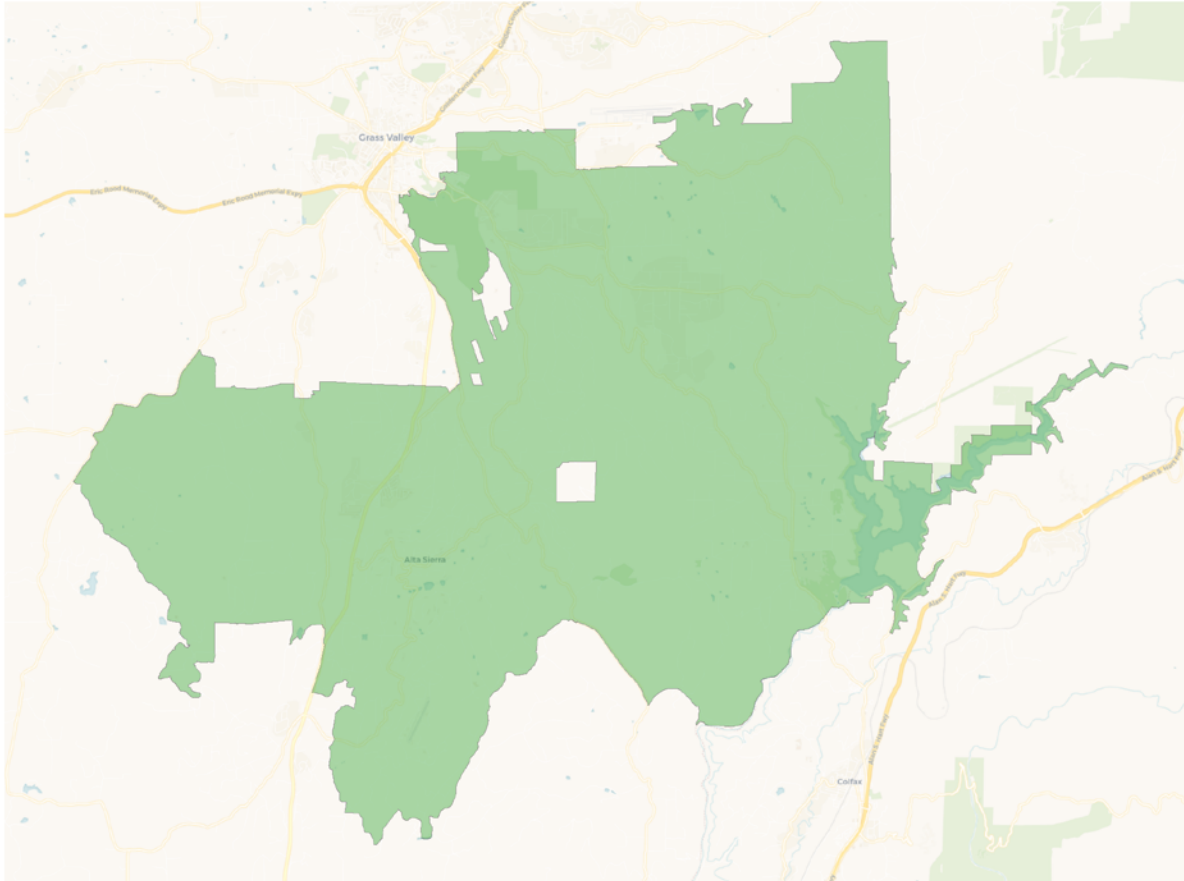


Citizen Voting Age Population

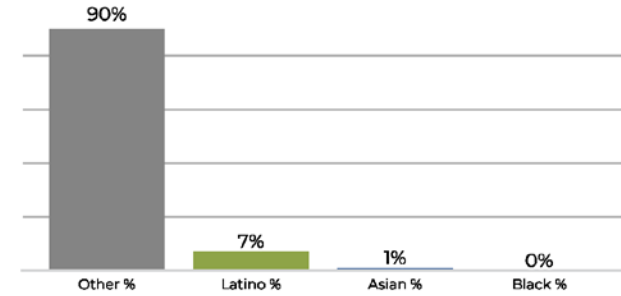


Population	Deviation	Deviation %	Other	Other %	Latino	Latino %	Asian	Asian %	Black	Black %
19,943	103	0.5%	17,896	89.7%	1,719	8.6%	253	1.3%	75	0.4%
Total CVAP	Other CVAP	Other CVAP %	Latino CVAP	Latino CVAP %	Asian CVAP	Asian CVAP %	Black CVAP	Black CVAP %		
16,035	14,697	91.7%	1,208	7.5%	54	0.3%	76	0.5%		

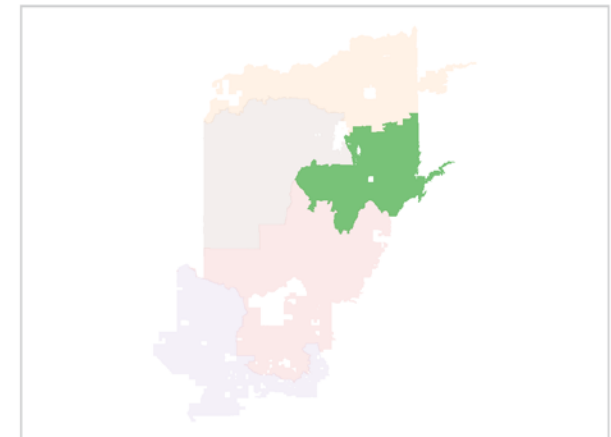
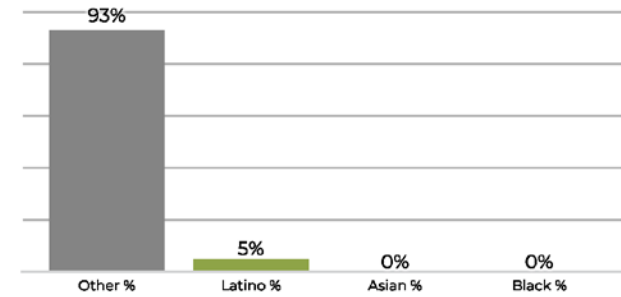
District 2



2020 Census

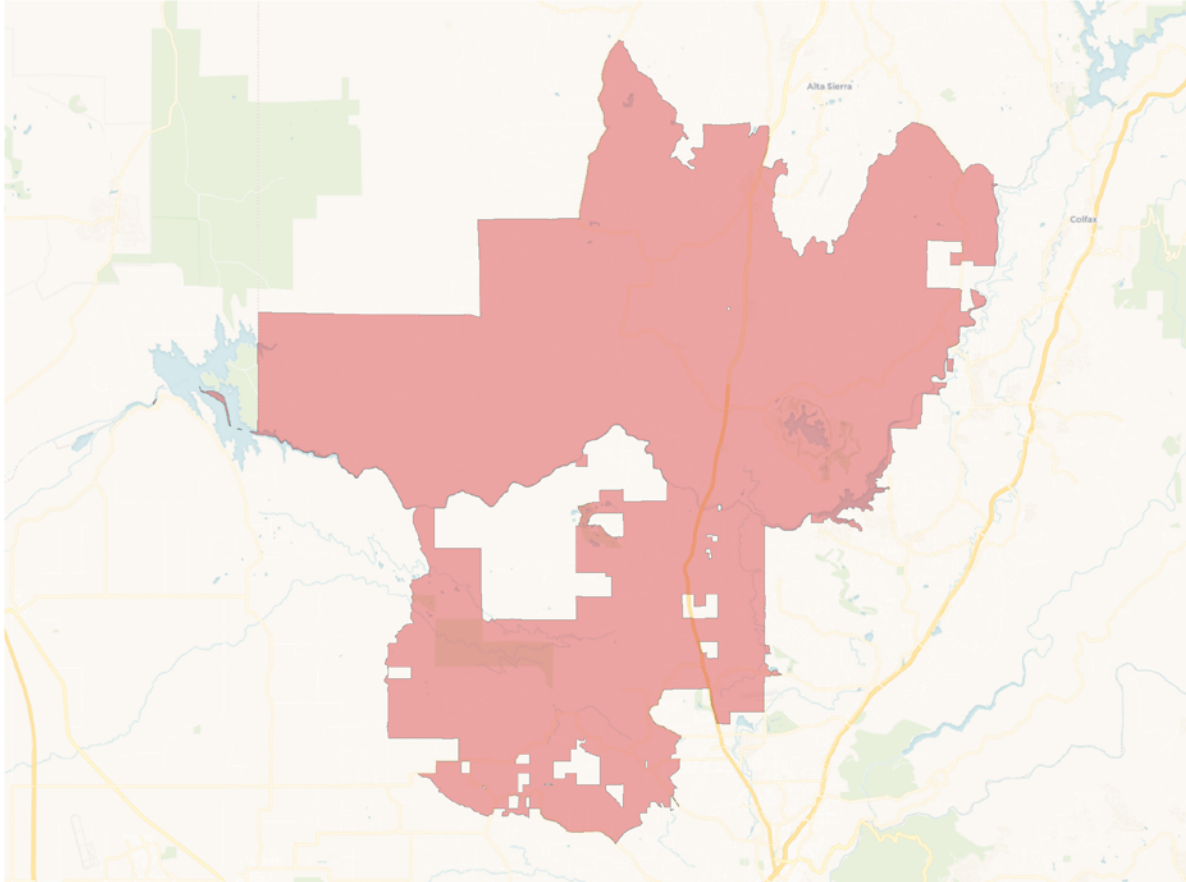


Citizen Voting Age Population

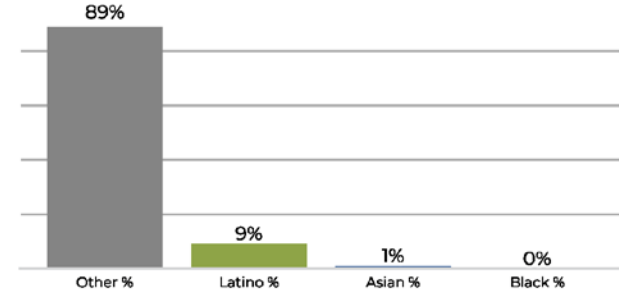


Population	Deviation	Deviation %	Other	Other %	Latino	Latino %	Asian	Asian %	Black	Black %
19,621	-219	-1.1%	17,755	90.5%	1,559	7.9%	240	1.2%	67	0.3%
Total CVAP	Other CVAP	Other CVAP %	Latino CVAP	Latino CVAP %	Asian CVAP	Asian CVAP %	Black CVAP	Black CVAP %		
16,045	15,039	93.7%	843	5.3%	99	0.6%	64	0.4%		

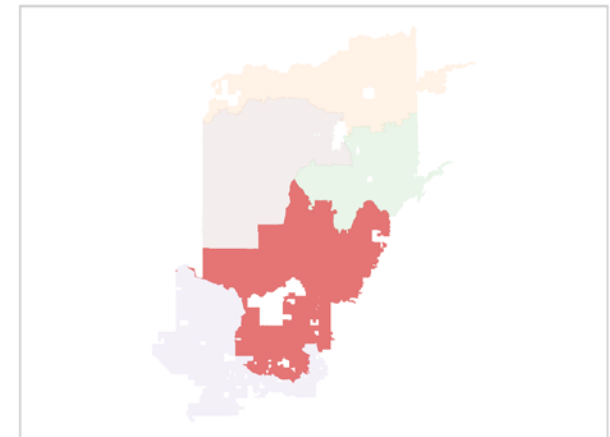
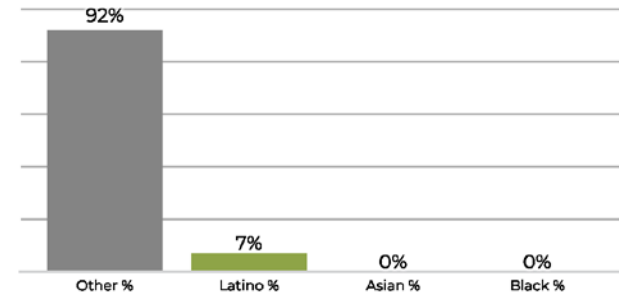
District 3



2020 Census

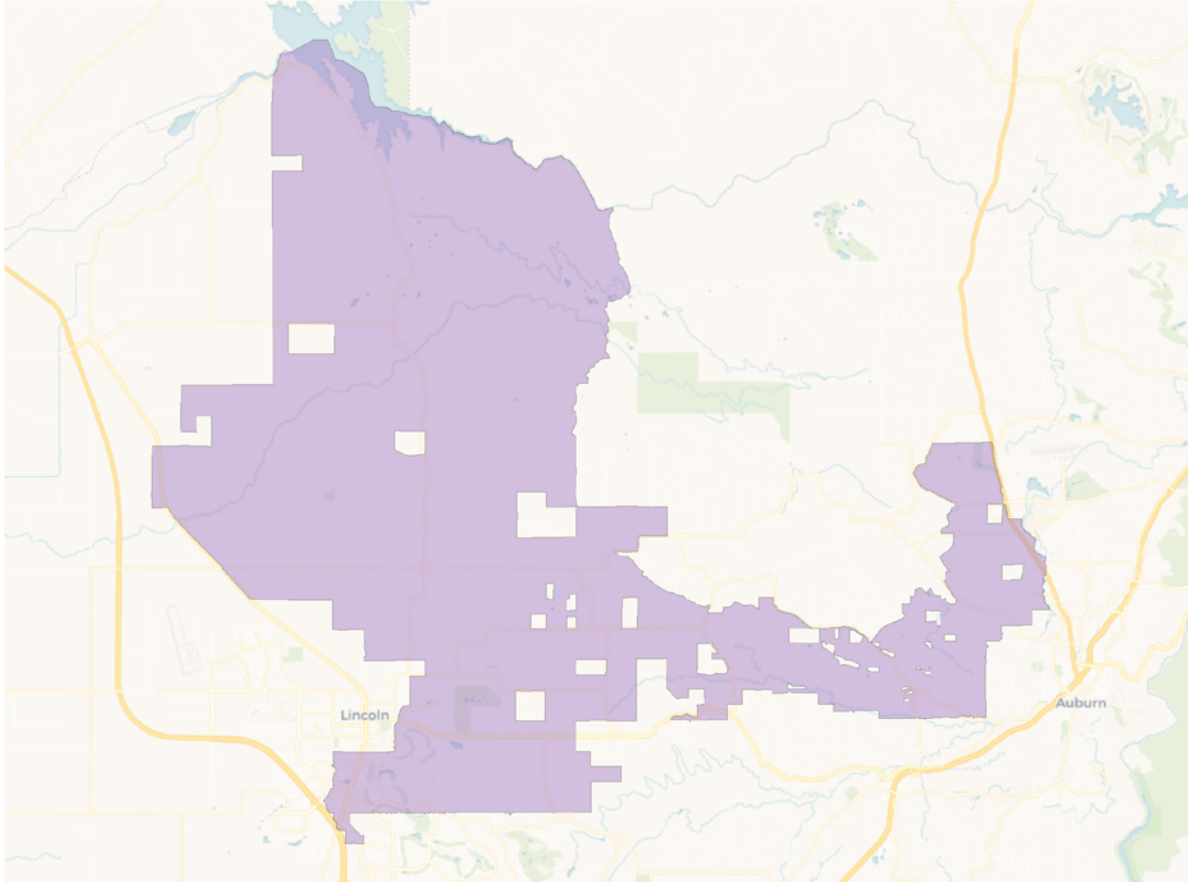


Citizen Voting Age Population

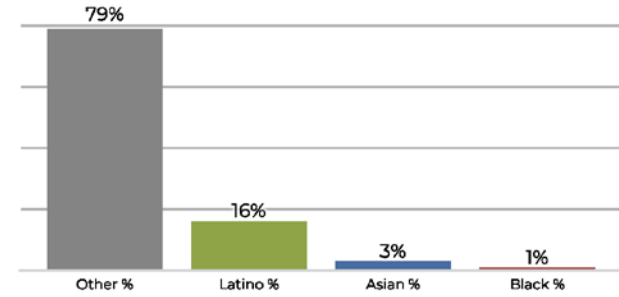


Population	Deviation	Deviation %	Other	Other %	Latino	Latino %	Asian	Asian %	Black	Black %
19,943	103	0.5%	17,757	89.0%	1,792	9.0%	299	1.5%	95	0.5%
Total CVAP	Other CVAP	Other CVAP %	Latino CVAP	Latino CVAP %	Asian CVAP	Asian CVAP %	Black CVAP	Black CVAP %		
16,700	15,368	92.0%	1,165	7.0%	128	0.8%	39	0.2%		

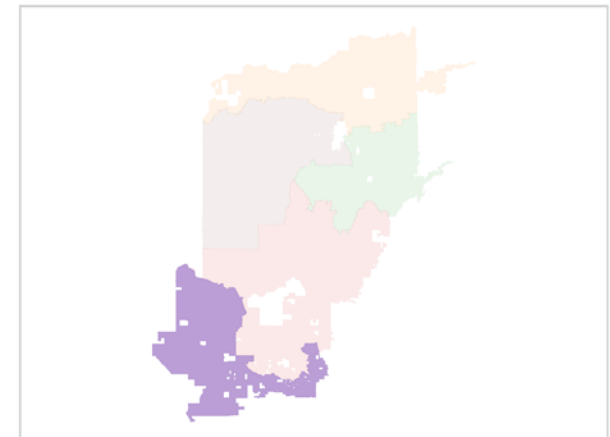
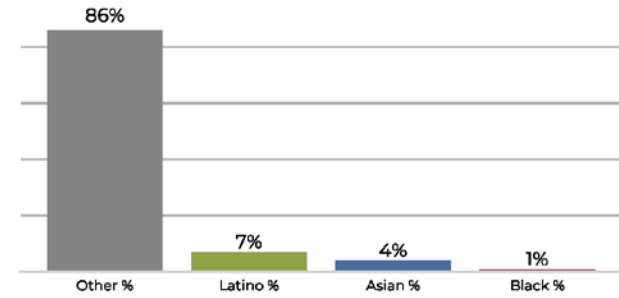
District 4



2020 Census

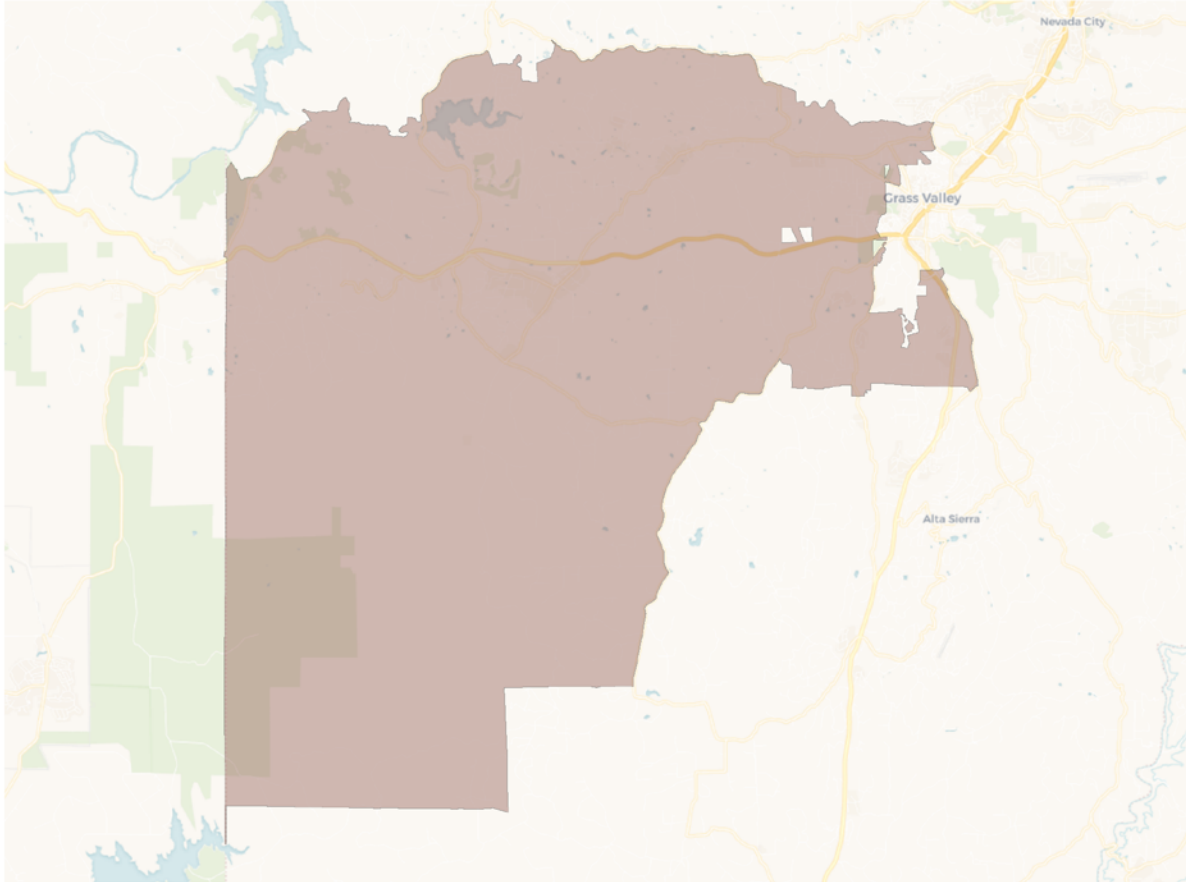


Citizen Voting Age Population

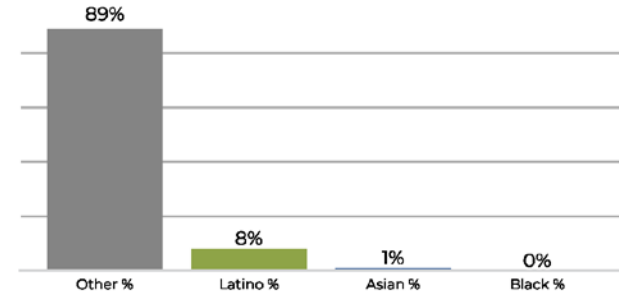


Population	Deviation	Deviation %	Other	Other %	Latino	Latino %	Asian	Asian %	Black	Black %
20,005	165	0.8%	15,840	79.2%	3,227	16.1%	701	3.5%	237	1.2%
Total CVAP	Other CVAP	Other CVAP %	Latino CVAP	Latino CVAP %	Asian CVAP	Asian CVAP %	Black CVAP	Black CVAP %		
15,864	13,693	86.3%	1,134	7.1%	744	4.7%	293	1.8%		

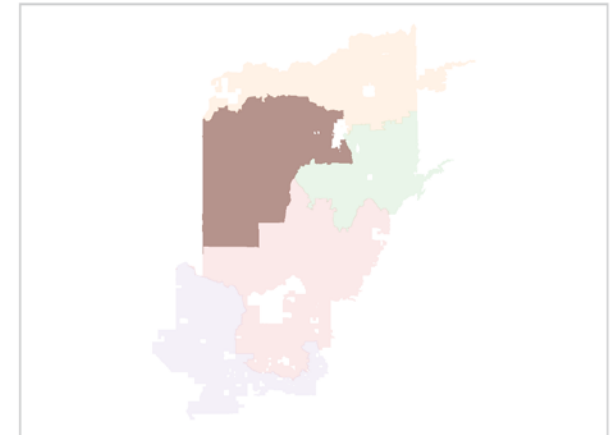
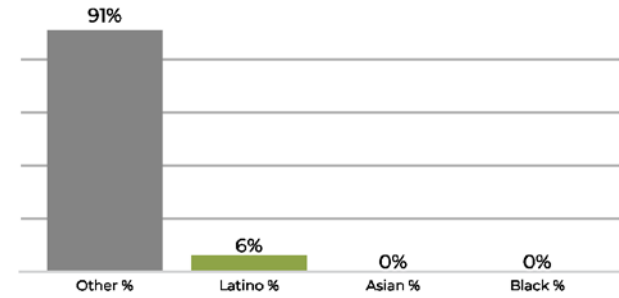
District 5



2020 Census



Citizen Voting Age Population



Population	Deviation	Deviation %	Other	Other %	Latino	Latino %	Asian	Asian %	Black	Black %
19,688	-152	-0.8%	17,639	89.6%	1,721	8.7%	242	1.2%	86	0.4%
Total CVAP	Other CVAP	Other CVAP %	Latino CVAP	Latino CVAP %	Asian CVAP	Asian CVAP %	Black CVAP	Black CVAP %		
15,208	13,922	91.5%	1,029	6.8%	135	0.9%	122	0.8%		